



THE CORPORATION OF THE TOWN OF COBOURG

BY-LAW NUMBER 048-2023

BEING A BY-LAW TO REGULATE THE PARKING OF VEHICLES IN THE TOWN OF COBOURG AND TO REGULATE VEHICULAR PARKING WITHIN THE LIMITS OF THE TOWN OF COBOURG ON STREETS AND PARKING LOTS

WHEREAS the Table within Section 11 of the *Municipal Act, 2001, S.O. 2001, c. 25*, provides that the sphere of jurisdiction "Highways, including parking and traffic on Highways" is assigned on a nonexclusive basis to all upper tier municipalities;

AND WHEREAS paragraph 11(2)(3) of the *Municipal Act, 2001* provides that, where a sphere or part of a sphere is assigned non-exclusively to an upper tier municipality, both the upper and lower tier municipalities have the power to pass by-laws under that sphere or part of a sphere;

AND WHEREAS Section 63 of the *Municipal Act, 2001* authorizes that, where a municipality passes a by-law for prohibiting or regulating the placing, stopping, standing or parking of an object or Vehicle on a Highway, it may provide for the removal and impounding or restraining and immobilizing of any object or Vehicle placed, stopped, standing or parked on a Highway in contravention of the by-law;

AND WHEREAS Section 100 of the *Municipal Act, 2001*, authorizes a municipality to pass by-laws to regulate or prohibit the parking or leaving of vehicles on private land used as a parking lot with or without the consent of the Owner;

AND WHEREAS Section 100.1 of the *Municipal Act, 2001* authorizes a municipality to regulate or prohibit the parking or leaving of Vehicles on Private Property without the consent of the Owner of the land;

AND WHEREAS Section 102 of the *Municipal Act, 2001* provides that a municipality may require Owners and operators of public parking lots or facilities to provide designated parking spaces for Vehicles displaying an Accessible Parking Permit;

AND WHEREAS Section 102.1 of the *Municipal Act, 2001, S.O. 2001, c.25*, as amended, (the "Municipal Act") and Ontario Regulation 333/07 (the "Regulation") authorize The Corporation of the Town of Cobourg to require a person to pay an administrative penalty for a contravention of any bylaw respecting the parking, standing or stopping of Vehicles;

AND WHEREAS any by-law that establishes a system of administrative penalties with respect to parking, standing, or stopping of Vehicles must comply with the requirements set out in O. Reg. 333/07, as amended, made pursuant to the *Municipal Act, 2001*;

AND WHEREAS pursuant to O. Reg. 333/07 and Section 391 of the *Municipal Act, 2001* the Town may also impose fees or charges in connection with the administration of a system of administrative penalties;

AND WHEREAS subsection 439(2) of the *Municipal Act, 2001* may provide for a procedure for the voluntary payment of penalties out of court in cases where it is alleged that a by-law related to the parking, standing and stopping of Vehicles has been contravened

NOW THEREFORE BE IT RESOLVED THAT the Municipal Council of the Corporation of the Town of Cobourg enacts as follows:

1. DEFINITIONS

(a) In this by-law, unless a contrary intention appears,

“**authorized sign**” means any Sign, or Roadway, curb, or Sidewalk marking, electronic sign trailer or other device, placed or erected on a highway under the authority of this By-law for the purpose of regulating, warning or guiding traffic for the Parking of Vehicles.

“**boulevard**” means that portion of the highway located between the edge of the Roadway and the property line of the Highway which may include the untraveled portion of any Highway, grassed/graveled or paved area, ditches, Sidewalks and paved paths.

“**building**” shall mean a building as defined in *The Building Code Act, R.S.O. 1997, Chapter 51*;

“**bus**” shall mean a motor vehicle designed for carrying ten or more passengers and used for the transportation of persons;

“**bus stop**” shall mean that portion of roadway abutting the curb or portion of shoulder abutting the roadway, indicated by a posted authorized sign for the purpose of stopping buses operated by the Cobourg Transit while picking up or discharging passengers;

“**Commercial Vehicle**” means any vehicle including any Trailer attached thereto, which exceeds 2.6 meters in width or exceeds 7 meters in length, or exceeds 2.5 meters in height, or exceeds 2,500 kg (5500 lbs) in weight, and includes ambulances, hearses, fire apparatus, motor buses and tractors used for hauling purposes on the highways;

“**Town Council**” shall mean the Town Council of The Corporation of The Town of Cobourg;

“**Corporation**” shall mean The Corporation of the Town of Cobourg;

“**Council**” shall mean the Municipal Council of The Corporation of the Town of Cobourg;

“**crosswalk**” shall mean that part of the highway at an Intersection that is included within the connections of the lateral lines of the Sidewalks on opposite sides of the Highway measured from the curbs or, in the absence of curbs, from the edges of the Roadway or any portion of a Roadway at an Intersection or elsewhere distinctly indicated for Pedestrian Crossing by Signs or by lines or other markings on the surface;

“**curb**” shall mean the edge of the travelled portion of a street or roadway;

“**designated fire route**” shall mean a fire route designated as provided by the by-law and listed in Schedule “F” hereto annexed;

“**designated accessible parking**” shall mean a parking space marked by a sign indicating such space is to be for the sole use of vehicles operated by or conveying person with a disability and for which a permit has been issued pursuant to the provisions of the *Highway Traffic Act, R.S.O. 1990, chapter H.8* as amended;

“designated accessible parking space” shall mean a parking space designated for the sole use of vehicles of a person with a disability;

“disabled person” shall have the same meaning as in R.R.O. 1990, Regulation 581 to the Highway Traffic Act, R.S.O. 1990, c H.8, as amended;

“double parking” shall mean the parking of a vehicle on any roadway, beside another vehicle which is legally parked adjacent to the curb of the roadway or edge of the roadway, so that vehicles are side by side or any part of the vehicles is side by side;

“driveway access” shall mean the portion of a street which is improved to permit the passage of vehicles between the adjacent roadway and the abutting property;

“East Beach Area” shall mean the area east of Victoria Park and includes the following streets:

- Queen Street from Church Street to D’Arcy Street
- Perry Street from Paul Currelly Way to D’Arcy Street
- Bay Street from Green Street to D’Arcy Street
- Green Street from King Street East to Bay Street
- Henry Street from King Street East to Water Street
- Church St from King St East to Perry St

“Front Yard” means a Yard extending across the full width of a lot between the front line and the nearest wall of the principle building or structure on the lot;

“highway” shall mean a common and public highway lane, street, avenue, parkway, driveway, square, place, bridge, viaduct or trestle designed and intended for, or used by the general public for the passage of vehicles and includes the area between the lateral property lines thereof;

“holiday” shall mean a statutory holiday, namely, New Years Day, Good Friday, Easter Sunday, Victoria Day, Canada Day, Civic Holiday, Labour Day, Thanksgiving Day, Christmas Day and Boxing Day;

“identifying marker” shall mean when used with respect to parking for disabled persons, means the disabled persons parking permit issued by the Ministry of Transportation under the authority of the *Highway Traffic Act*, R.S.O. 1990, chapter H.8 as amended.

“intersection” shall mean the area embraced within the prolongation or connection of the lateral curb lines, or if none, then of the lateral boundary lines of two or more highways which join one another at an angle, whether or not one highway crosses the other;

“loading” shall mean the physical activity of moving merchandise from or to a property or another vehicle and the physical activity of passengers entering or departing a vehicle;

“lot lines” means a boundary of a lot including its vertical projection;

“loading zone” shall mean the part of a highway set apart for the exclusive purpose of parking a vehicle to load or unload same;

“median” means the portion of a Highway so constructed as to separate traffic travelling in one direction from traffic travelling in the opposite direction by a physical barrier or an unpaved strip of ground;

“motorcycle” shall mean a self-propelled vehicle having a seat or saddle for the use of the driver and designed to travel on not more than three wheels in contact with the ground and shall include a bicycle with a motor attached and a motor scooter;

“motor vehicle” includes an automobile, motorcycle, motor assisted bicycle unless otherwise indicated in this by-law, and any other vehicle propelled or driven otherwise than by muscular power, but does not include a street car, or other motor vehicles running only upon rails, or a motorized snow vehicle, traction engine, farm tractor, self-propelled implement of husbandry or road building machine within the meaning of the *Highway Traffic Act*;

“Municipal Law Enforcement Officer” includes, for the purposes of this By-law, a Municipal Law Enforcement Officer appointed by the Town and an Officer of the Cobourg Police Services;

“Municipal Parking Areas” means those areas on municipally owned land, excluding Roadways or Highways, specifically set aside for the parking of Vehicles which is owned or operated by the Town;

“municipal or private property” shall mean any open area or portion of a structure, other than a street or highway, intended for the temporary parking of vehicles and on which there are designated parking spaces, whether their use involves the payment of a fee or otherwise;

“municipal vehicle” shall mean an automobile, motorcycle and any other vehicle propelled or driven otherwise than by muscular power but does not include the cars of electric or steam railways, traction, traction engine, farm tractor, self propelled implement of husbandry or road building machine for Town of Cobourg;

“municipality” shall mean the municipality of the Town of Cobourg;

“Officer” means a Police Officer as defined under the *Police Services Act, R.S.O. 1990, c/ P15*, as amended, and an individual appointed by the Town as a Municipal Law Enforcement Officer pursuant to section 15 of the *Police Services Act*, as amended, or any other individual designated by the Town to enforce this By-law;

“Occupant” means:

- 1) the tenant of Private Property or part thereof whose consent shall extend only to the control of the land of which they are a tenant and any parking spaces allotted to them under his lease or tenancy agreement;
- 2) the spouse of a tenant;
- 3) a person, a municipality or a local board thereof, having an interest in the property under an easement or right-of-way granted to or expropriated by the person, municipality or local board whose consent to permit parking on Private Property shall extend only to that part of the property that is subject to the easement or right-of-way; 4) a person authorized in writing by an Occupant as defined in clauses (1), (2), or (3) of this section to act on the Occupants behalf for requesting the enforcement of this bylaw;

“Owner of Land” means an owner of real property in accordance with the land title record of the province;

“Owner of a Vehicle” means an owner in accordance with the Ministry of Transportation records.

“one-way street” shall mean a street upon which vehicular traffic is limited to movement in one direction;

“overweight vehicle” shall mean a commercial vehicle having a weight of three (3) tonnes or more and shall include construction equipment, farm equipment, repair or towing vehicles, utility trailers storage trailer but does not include the following:

- I. any vehicle of a police or fire department,
- II. any vehicle operated by or on behalf of the Town of Cobourg,
- III. any vehicle operated by or on behalf of the Lakefront Utilities Services Inc.,
- IV. an ambulance,
- V. any vehicle operated by or on behalf of Bell Telephone, Centra Gas or Ontario Hydro,
- VI. any passenger vehicle,
- VII. any school bus or transit bus which is in the course of transporting people,

“park” or “parking”, (“when prohibited”), shall mean the standing of a vehicle whether occupied or not, except when standing temporarily for the purpose of and while actually engaged in loading or unloading merchandise or passengers;

“parking infraction” means any unlawful parking, standing, or stopping of a Vehicle that constitutes an offence;

“parking lot” shall mean any lands owned or leased by the Corporation, designed, maintained, regulated and enforced, for the purpose of providing public parking spaces, except a roadway, which shall have the same status as a public highway for the purpose of this by-law;

“Parking Permit” means any Parking Permit issued to any person or any Vehicle by the Town of Cobourg for the purpose of permitting parking including during a time when parking may otherwise be prohibited and includes without limitation an Accessible Person Parking Permit, a Lease Parking Permit, and a Temporary Parking Permit;

“parking meter zone” shall mean a part of a street designated by this by-law for parking purposes timed by parking meters;

“parking space” shall mean a portion of the surface of the roadway designated by suitable markings;

“parking meter” shall mean:

- I. a device, sometimes referred to as an "individual parking meter", which indicates thereon the length of time during which a vehicle may be parked, which device has as a part thereof a receptacle for the receiving and storing of coins/credit card and a slot or place in which coins/credit card may be deposited to activate a timing mechanism to indicate the passage of the interval of time following the deposit of a coin or coins therein, the measurement of which interval is determined by the coin or coins so deposited, and which device also displays a signal when the said interval of time has elapsed; and a device, sometimes referred to as a "pay and display parking meter", which dispenses a piece of paper intended to be removed from the device and displayed by the operator of a vehicle on the interior right-hand side of the front windshield of the vehicle when parked, the paper being imprinted with a time and date beyond which the vehicle may not be parked, and which device has as a part thereof a receptacle for the receiving and storing of coins and a slot or place in which coins may be deposited to activate a mechanism to imprint a time and date on the piece of paper

following the deposit of a coin or coins therein, the specific time and date being determined by the coin or coins so deposited;

“pay and display” shall mean a method of regulating parking, by which the customer purchases a ticket from a machine and displaying the ticket on the windshield or passenger window of the vehicle;

“pedestrian” shall mean a person traveling on foot and includes a person in a wheelchair and a child in a baby carriage;

“Penalty Notice” means a ticket issued pursuant to the Town of Cobourg Administrative Monetary Penalty System By-law 079-2022”

“pedestrian crossover” shall mean any portion of a roadway designated by by-law of the municipality, at an intersection or elsewhere distinctly indicated for pedestrian crossing by signs on the highway and by lines or other markings on the surface of the roadway as prescribed by the regulations;

“person” shall mean any person, firm, partnership, association, corporation, company or organization of any kind;

“Private Property” means property that has been clearly marked as such by fences or on which a legible Sign or Signs have been erected by the Owner, the Occupant, or an agent for either, forbidding trespass or parking on a private road or driveway;

“Power Assisted Bicycle (E-bike)” shall mean a power assisted bicycle as defined by the *Highway Traffic Act, R.S.O. 1990, C. H-8*, as amended.

“private roadway” shall mean when used with reference to a fire route, means any private road, lane, ramp or other vehicular access to or egress from a building or structure and it may include part of a parking lot;

“public parking lot or facility” shall mean an off-street parking lot or other parking facility to which the public has access whether on payment of a fee or otherwise;

“rear yard” means a Yard extending across the full width of a lot between the rear Lot Line and the nearest main wall of any main building or structure on the Lot;

“recreational vehicle” shall mean, motor vehicle or trailer which includes living quarters designed for accommodation. Types of RVs include motorhomes, campervans, caravans, fifth-wheel trailers, popup campers and truck campers.

“restricted parking zone” shall mean a street or part of a street designated by this by-law for the purposes of time restricted parking;

“Resident Accessible Downtown Parking Permit” shall mean a parking permit which can be purchased by a person who has a Provincially issued Accessible Permit in any area that you have to pay for parking within the downtown parking areas, including Parking Meters and Pay and Displays.

“Resident Waterfront Season Parking Pass” shall mean a parking permit that allows residents of the Town of Cobourg to receive to pay for parking during the waterfront enforcement season as outlined in Schedule “K” Residents must upload supporting documentation or identification with a valid Cobourg municipal address to obtain a Resident Waterfront Parking Permit.

“roadway” shall mean the part of a highway that is improved, designed or ordinarily used for vehicular traffic, but does not include the shoulder, and where a highway includes two or more separate roadways, the term "roadway" refers to any one

roadway separately and not to all of the roadways collectively;

“school bus” shall mean a vehicle that is used for the transportation of;

- I. children, or
- II. disabled persons that bears on the front and rear thereof the words "school bus" and on the rear thereof the words "Do not pass when signals flashing";

“School Bus Loading Zone” means an area marked by Signs indicating such area to be for the sole use of school buses engaged in receiving or discharging passengers;

"School Crossing" means a pedestrian crossing on a public Highway where the crossing of the street by school children is normally supervised by a School Crossing guard or a Police Officer during those Times when children are likely to be walking to or from a local school;

“school vehicle” shall mean a vehicle that is used for the transportation of:

persons to or from school and shall only include the following:

- I. a school bus,
- II. a bus, and
- III. a vehicle that is designed to carry less than ten passengers and is used for the transportation of persons and which is identified by public vehicle plates and/or school safety stickers;

“service road” shall mean a road that:

- I. provides private access to a building or parking area; and
- II. is located on the property of the owner;

“shoulder” shall mean that portion of every street which abuts the roadway and which is designed and intended for passage or stopping of motor vehicles but which extends no more than 3.6 metres in width from the limit of the roadway;

“sidewalk” shall mean any municipal walkway, or that portion of a street between the curb line or the lateral line of a roadway and the adjacent property line, primarily intended for the use of pedestrians;

“sign” or “sign, authorized” shall mean any sign which is authorized pursuant to the *Highway Traffic Act*, R.S.O 1990, c, H.8 or the Regulations passed thereunder or by the Council of the Municipality or a Municipal Official designated by the Council to exercise its authority in this regard;

Snow Event means a period during which the Director of Public Works, or their delegate, declares that they anticipate a snow fall or accumulation which is likely to require extensive snow ploughing, snow clearing, or snow removal operations. A snow event shall end 24 hours later unless cancelled or extended by the Director, of Public Works in accordance with the provisions of this by-law.

“stand” or “standing” shall mean the halting of a vehicle, whether occupied or not, except for the purpose of and while actually engaged in receiving or discharging passengers;

“stop”, “when required”, shall mean the complete cessation of movement;

“stop” or “stopping”, “when prohibited”, shall mean the halting of a vehicle, even momentarily, whether occupied or not, except when necessary to avoid

conflict with other traffic or in compliance with the directions of a constable or other police officer or of a traffic control sign or signal;

“street” or “highway” shall mean a common and public highway, street, avenue, parkway, driveway access, square, place, bridge, viaduct or trestle designed and intended for or used by the general public for the passage of vehicles and includes the area between the lateral property lines thereof;

“Side Yard” means a Yard extending across the full width of a lot between the rear Lot Line and the nearest main wall of any main building or structure on the Lot;

“through highway” shall mean any highway or part of a highway designated as such by the by-law of the municipality and all intersecting highways are marked by a stop sign or yield sign in compliance with the regulations of the Ministry of Transportation;

“time” shall mean where any expression of time occurs or where any hour or other period of time is stated, standard time or daylight saving time, whichever is in effect in the Town of Cobourg pursuant to the *Time Act*;

“to” shall mean “including” when referring to the days of the week;

“tractor-trailer unit” shall mean the combination of a commercial motor vehicle and a trailer or semi-trailer;

“Trailer” means a Trailer as defined in the Highway Traffic Act;

“Traffic Control Device” means any Sign, Signal or other Roadway, curb or Sidewalk marking, or any other device erected or placed under the authority of this By-law for the purpose of regulating, warning or guiding traffic;

“truck loading zone” shall mean an area or place on a highway established by authority of this by-law for the accommodation of commercial vehicles and the loading and unloading of goods, wares, merchandise or passengers;

“Unauthorized Area” means:

- 1) a Front Yard or Side Yard, except as otherwise permitted under the Town’s Zoning By-law as amended; or
- 2) the Boulevard, except where parking, standing, or stopping is authorized by Town of Cobourg by-law;

“Unauthorized Motor Vehicle” means a Vehicle that does not have a permit properly affixed and displayed in accordance with the provisions set forth in this By-law;

“vehicle” shall mean a motor vehicle, trailer, traction engine, farm tractor, road building machine and any vehicle drawn, propelled or driven by any kind of power, including muscular power, but does not include a motorized snow vehicle, the cars of electric or steam railways running only upon rails;

“Veteran License Plate” shall mean an official Ontario License Plate with a poppy on it and with the word ‘Veteran’ underneath.

“Yard” means an open space on a lot appurtenant to a building and unoccupied by buildings or structures.

2. APPLICATION

- (1) This By-law applies to Parking Vehicles on:
 - (a) Highways under the jurisdiction of the Town;
 - (b) Town Facilities;
 - (c) Municipal property; or
 - (d) Private Property
- (2) Every Vehicle parked on a street or in a municipal parking lot shall be parked at the risk of its Owner and the Town is not responsible for any loss or damage to any Vehicle or its contents.
- (3) All attached Schedules form part of this By-law.

3. EXEMPTIONS AND AUTHORITIES

- (1) The following are exempt from this By-law:
 - (a) any ambulance, police, or fire department Vehicles;
 - (b) any public utility emergency Vehicles;
 - (c) Town Vehicles or Municipal Enforcement Officers engaged in the course of their duties on behalf of the Town;
 - (d) public transit Vehicles where compliance would be impractical due to the location of a bus stop for public transit; or
 - (e) school busses engaged in the course of their duties.
 - (f) Any vehicle displaying a valid Veterans license plate are exempt from paying in all municipal surface lots or streets for a period of up to 24 hours.
- (2) The Director of Public Works and the Director of Legislative Services or their designates are authorized to:
 - (a) without limitation issue; Parking Permits, Lease Parking Permits, and Temporary Parking Permits which allows parking in a designated area and during a time period including during a time period when parking may otherwise be prohibited;
 - (b) prescribe the conditions under which Parking Permits, Lease Parking Permits and Temporary Parking Permits may be issued;
 - (c) prescribe a list of persons providing home health care services within the territorial limits of the Town for which exemptions under this By-law may be prescribed;
 - (d) prescribe the provisions of this By-law from which such persons may be exempt; and
 - (e) prescribe the conditions under which such persons may enjoy such exemptions.

4. AUTHORIZED SIGN

- (1) The Director of Public Works of the Town or their designate is empowered to authorize any Signs required to give effect to the provisions of this By-law, including the placement and maintenance of those Signs.
- (2) No person shall place, maintain or display upon or in view of any road, sign, signal, marking or device which purports to be or is an imitation of or resembles any authorized sign which conceals from view or interferes with the effectiveness of any authorized sign.

- (3) No person shall willfully move, alter, deface, or otherwise interfere with any authorized sign erected or placed pursuant to the provisions of this by-law.
- (4) No person shall park a Vehicle in obstruction to where an Authorized Sign has been placed.

5. METHOD OF PARKING

- (1) No person shall stop, stand, or park a Vehicle:
 - a) in the wrong direction by facing oncoming traffic, having regard for the direction in which the Vehicle had been proceeding;
 - b) no further than 30cm (12 inches) from the curb or edge of the Highway; or
 - c) on any Highway unless the Vehicle is parallel to the curb or edge of the Highway
- (2) Where angle parking is permitted, no person shall park a vehicle except at an angle of 45 degrees with the edge of the roadway.

6. PARKING PROHIBITIONS

- (1) In addition to the prohibitions contained in Section 6(1), no person shall park a Vehicle:
 - (a) on any Boulevard
 - (b) In front of or within 1 metre of a public or private driveway so as to block that driveway or which obstructs, or is likely to obstruct other vehicles in the use of a driveway;
 - (c) causing obstruction;
 - (d) between the hours of 2:00 A.M. to 7:00 A.M on a Highway between November 1st and March 31st of each year as outlined on Schedule "M" for Winter Maintenance.
 - (e) Between the hours of 2:00 A.M. to 7:00 A.M on a Highway between April 1st to October 31st of each year as outlined on Schedule "M" for General Road Maintenance.
 - (f) on cul-de-sacs, and wide corners between November 1st and March 31st of each year as outlined on Schedule "N" for Winter Maintenance.
 - (g) within 152m (500ft) of firefighting apparatus while engaged in fighting a fire or any distance directed by a member of the Police or Fire Department;
 - (h) within 9m (30ft) of any non-signalized Intersection;
 - (i) within 15m (49ft) of any signalized intersection
 - (j) Within 3m (10ft) of a point on a curb or edge of the roadway opposite any fire hydrant;
 - (k) Within 9m (30ft) of a crosswalk or intersection;
 - (l) On or over a crosswalk;
 - (m) On any bridge
 - (n) On a median
 - (o) Within a turning circle or roundabout
 - (p) Beside another vehicle that is stopped or parked parallel to the Highway;
 - (q) Advertised for sale on a Highway;
 - (r) Without valid registration or insurance

- (s) On a Highway while degreasing/washing the Vehicle;
 - (t) Alongside the tracks of a railway;
 - (u) In such a position as will prevent the convenient removal of any vehicle previously parked or left standing;
 - (v) Within a turning basin;
 - (w) Causing obstruction to any entrance or exit from any building or enclosed space;
 - (x) Within 9m (30ft) of any T intersection on either side of the highway which is the through highway of the T intersection;
 - (y) Within 15m (50ft) of an Intersection where an Authorized Sign has been displayed;
 - (z) Within 30m (100ft) of an Intersection controlled by traffic signals
 - (aa) Within 15m (50ft) from the end of a dead-end Roadway;
 - (bb) Within 3m (10ft) of a walkway or path that connects to the highway with a sidewalk on the opposite side of the highway; or
 - (cc) Within an unauthorized Area or permit to be parked within an unauthorized area.
 - (dd) No person shall park an unattended vehicle on the east pier at the Cobourg harbour;
 - (ee) Within 8m (26ft) on the same side of the street as the entranceway to a Fire Hall or within 30m (100ft) of the extension of the edges of the entranceway to a Fire Hall on the opposite side of the street; or
 - (ff) Within 24m (78ft) of any point designated as a bus stop;
 - (gg) within 15m (50ft) of the intersecting street lines at those places set out in Schedule "A" attached to this by-law and forming part of this by-law.
 - (hh) Overnight between the hours of 11:00 P.M. and 6:00 a.m. from Victoria Day Weekend to Thanksgiving Day at the Waterfront in the areas listed within Schedule "H".
 - (ii) in the three parking spaces on the east side of Hibernia Street located from 20m (65ft) south of King Street to 37.7m (124ft) south of King Street and designated as RESERVED PARKING POLICE except employees of the Police Force for the Corporation of the Town of Cobourg;
- (3) No Person shall park a Commercial Vehicle on any street in any residential zones unless it is, at that Time, being used to make a delivery or to provide service
- (4) No Person shall park a Trailer on any street in any residential zones unless it is, at that Time, being used to make a delivery or to provide service.
- (5) No person shall park a Vehicle within the following distances of a Crosswalk controlled by traffic control signals and located elsewhere from an Intersection:

(6) No person shall park or leave any Vehicle:

- a) within 15m (50ft) measured on each side of the Highway in the direction of travel by Vehicles; or
- b) within 30m (100ft) measured on each side of the Highway in the opposite direction of travel by Vehicles.

(7) No person shall park or leave any Vehicle:

- a) on Private Property without consent of the Owner or Occupant of the property;
- b) on property owned or occupied by the Town where parking by the public is not authorized;
- c) at any Town park, building, or facility for longer than permitted or at any Time prohibited by an Authorized Sign.

7. STOPPING PROHIBITIONS

(1) No person shall stop a Vehicle:

- (a) Within an Intersection
- (b) Within 9m (30ft) of a Pedestrian Crossover
- (c) Within 9m (30ft) of a School Crossing Guard Location
- (d) Causing Obstruction
- (e) In any place in contravention of a Traffic Control Device that gives notice that stopping or standing is prohibited or restricted in that place;
- (f) Beside another Vehicle that is stopped or parked parallel to the Highway
- (g) On a bridge
- (h) Within a tunnel or underpass;
- (i) On a Highway that obstructs the free flow of traffic;
- (j) Within a turning circle or roundabout
- (k) Within an Unauthorized Area or permit to be stopped within an Unauthorized Area.

8. ACCESSIBLE PARKING

(1) No person shall park, stop, or leave a Vehicle in any location designated as an Accessible Parking Space:

- (a) without a valid Accessible Parking Permit displayed.
- (b) without the person in which the pass was issued to is within the Vehicle;
or
- (c) in accordance with the requirements of the Highway Traffic Act.

(2) A valid permit shall be displayed on the sun visor or the dashboard of a Motor Vehicle in a manner which is fully visible from outside of the Motor Vehicle and available for inspection of all details required to confirm validity.

(3) No fees shall be charged for the use of the designated accessible parking space in excess of that fee charged to other members of the general public in respect to non-designated accessible parking spaces.

- (4) No person with a valid Downtown Accessible Parking Permit shall remain in a designated Accessible Parking Space, for a period longer than twenty-four Hours (24hrs).

9. NO PARKING SIGNS

- (1) Where Authorized Signs to that effect are displayed, no person shall park a Vehicle on any Roadway listed in (Column 1), between the limits (Column 2), and during the Times on the days (Column 3) set out in Schedule B.

10. NO STOPPING SIGNS

- (1) Where Authorized Signs to that effect are displayed, no person shall stop a Vehicle on any Roadway listed in (Column 1), between the limits (Column 2), and during the Times on the days (Column 3) set out in Schedule C.

11. PAID PARKING AND PARKING PERMITS

- (1) The Parking Lots named or described in Schedule H to this by-law are hereby designated as parking meter/pay and display parking and the fee for the use of a parking meter/pay and display parking space located in the parking meter/pay and display parking lots is as indicated in the said Schedule. Within a Parking Meter/Pay and Display Zone, no person shall park a vehicle:
- (a) in a parking meter/pay and display parking zone between the hours and during the days set out in Schedule H, of this by-law including legally and lawfully proclaimed holidays, unless the person pays the required fee in the parking meter/pay and display or has a Resident Waterfront Season Parking Pass(s), Visitor Seasonal or Daily Pass provided for the parking space occupied.
 - (b) in a parking space for a period longer than that for which payment has been made in the form of coins deposited in the parking meter or meters or pay and displays or through other methods of payment provided set out in Schedule H, however, that this shall not prevent the driver of a vehicle from using the unexpired time remaining from its previous use without depositing a fee therein.
- (2) The highways, parts of highways and sides of highways named or described in Schedule I to this by-law are hereby designated as parking meter/ pay and display zones and the fee for the use of a metered/pay and display parking space located in a parking meter/pay and display zone is as indicated in the said Schedule. Within a Parking Meter/Pay and Display Zone, no person shall park a vehicle:

- (a) in a parking meter/pay and display zone between the hours and during the days set out in Schedule I of this by-law including legally and lawfully proclaimed holidays, unless the person pays the required fee in the parking meter/pay and display, or a Downtown Accessible Monthly Parking Permit provided for the parking space occupied.
 - (b) in a parking space for a period longer than that for which payment has been made in the form of coins deposited in the parking meter or meters or pay and displays or through other methods of payment provided, set out in Schedule I, however, that this shall not prevent the driver of a vehicle from using the unexpired time remaining from its previous use without depositing a fee therein.
- (3) No person shall deposit or cause to be deposited in any parking meter or pay and display machine any; slug, device or other substitute coin which is not lawful tender in the Dominion of Canada or the United States of America;
- (4) No person shall allow a vehicle to remain in a parking space for a period longer than the maximum length of time for which continuous parking is permitted as indicated on the parking meter or meters or pay and displays provided for the parking space and as set out in Schedules H and I.
- (5) Where parking meters/pay and displays have been installed in parking spaces designated under the authority of this by-law on streets or in parking lots, no person shall park any vehicle in such a manner that any part of the vehicle is not within the parking space designated as such by lines of marking painted upon the surface of the street or parking lot, and any person who parks any vehicle in any space other than in a parking space designated by such lines or markings shall be deemed to have committed an offence pursuant to this by-law.
- (6) No person shall park in the East Beach Area set out in Schedule J that has not purchased hourly parking from Honk Mobile or purchased a Waterfront Parking Pass (Daily or Seasonal).
- (7) No person shall park in a parking space for a period longer than that for which payment has been made in the form of Honk Mobile, or waterfront parking pass for the East Beach Area set out in Schedule J.

12. PERMIT PARKING

- (1) Where authorized signs have been erected and on display no person shall park a motor vehicle:
- (a) who does not have a valid parking permit issued by the Corporation, and is parked for a period longer than sixty (60) minutes, for the parking lots described in Schedule D to this by-law, unless the vehicle visibly displays a valid Parking Permit affixed to the inside rear view mirror or dashboard of the motor vehicle, or in the case of the purchase of an electronic parking pass, the permit is registered to that motor vehicle license(s) through the Town's parking administration system.
 - (b) who does not have a valid parking permit issued by the Corporation, and is parked for a period longer than one hundred and twenty (120) minutes, for the parking lots described in Schedule E to this by-law, unless the vehicle visibly displays a valid Parking Permit affixed to the inside rear view mirror or dashboard of the motor vehicle, or in the case of the purchase of an electronic parking pass, the permit is registered

to that motor vehicle license(s) through the Town's parking administration system.

13 DESIGNATED PARKING AREAS

(1) Where properly worded or marked signs have been erected and are on display, no person shall park any vehicle at any time in any of the following mentioned reserved parking spaces within the Corporation:

- a) On the west side of Second Street and designated by a sign as "RESERVED PARKING MAYOR" except the person holding the office mentioned herein;
 - b) No vehicle shall park in the electric vehicle charging station pay parking space at 207 Division Street, unless charging a vehicle.
- (2) No person shall park any vehicle for a period longer than fifteen minutes (15min) in the Areas as described in Schedule "O"
- (3) No person shall park in the Resident Waterfront Season Pass Only Parking Lot identified in Schedule "L" without an issued Resident Waterfront Season Parking Pass(s).
- (4) No person shall deface, conceal, damage, tamper with, open or willfully break, destroy or impair the usefulness of any parking meter or pay and display parking machine or part thereof.

14. TRUCK LOADING ZONES

- (1) Where properly worded signs have been erected and are on display, no person shall at any time between the hours of 6:00 a.m. and 6:00 p.m. daily except Sundays and holidays, stop, stand or park a vehicle on that part of the highway hereby designated as a truck loading and unloading berth and described in Schedule "F" attached in this by-law and forming part of this by-law;
- (2) The provisions of Clause 14 (1) above shall not apply to:
- a) A commercial motor vehicle that is using the said berth for loading and unloading merchandise for a period of time not in excess of fifteen minutes at any one time, and;
 - b) Vehicles temporarily stopping for the purpose of and while actually loading or unloading passengers when such stopping does not interfere with any commercial motor vehicle attempting to enter such loading and unloading zone.
- (3) During the loading or unloading of goods, wares or merchandise of any kind, no vehicle shall be allowed to park or stand on the sidewalk or any portion thereof.
- (4) Vehicles shall be loaded or unloaded from the side and shall be parked within six inches of the curb wherever practical and no vehicle shall be backed up to a curb so as to obstruct traffic on the highway.

15. ROAD MAINTENANCE AND INOPERABLE VEHICLES

- (1) No person shall park a vehicle that:
- a) obstructs the removal of snow from the streets,
 - b) is parked on a roadway without a valid license plate or
 - c) a vehicle that is inoperable
- (2) No person shall park a vehicle on any Town of Cobourg residential street for a period exceeding twelve(12) hours parked.

16. SNOW EVENT

- (1) No person shall park a vehicle on any highway within the Municipality during a Snow Event.
- (a) The Director of Public Works, or their designate shall ensure that notice to the public of a Snow Event or an extension thereof is given in at least two of the following means:
- i. The issuance of a Public Notice and Media Advisory
 - ii. Posting of a notification on the Town of Cobourg Municipal Website
 - iii. any other means of giving notice that has a reasonable likelihood of coming to the attention of persons who are affected.
- (b) A Municipal Law Enforcement Officer, Police Officer or their designate, have the authority to have any vehicle which is parked on a roadway within the Corporation, and is in contravention of this section, towed away and impounded at the vehicle owner's expense when a vehicle is not removed during a declared Snow Event.

17 OVERWEIGHT AND RECREATIONAL VEHICLES

- (1) Where authorized signs to that affect are displayed at the main highway entrances to the Town of Cobourg, no person shall park a heavy truck as defined in this by-law in areas zoned for residential use as defined by the zoning by-law of the Corporation of the Town of Cobourg;
- (2) The provisions of Section 17 (1) shall not apply to any person who is using a heavy truck to make a delivery to or pick up goods from any premises which abut those portions of highways as designated in Section 17 (1), provided that the person that owns or operates the heavy vehicle parks it in such a manner that it does not obstruct the normal flow of traffic on the highway in question;
- (3) No person shall park a recreational vehicle as defined in Section 1 Part I on any part of highway or roadway within the Town of Cobourg.

18. REMOVAL OF ANY UNLAWFULLY PARKED VEHICLES

- (1) A Vehicle may be removed or impounded at the expense of the Owner if parked or left standing:
- (a) on Private Property without consent of the property Owner;
 - (b) on property owned or occupied by the Town where parking by the public is not authorized;
 - (c) at any Town park, building, or facility for longer than permitted or at any Time prohibited by an Authorized Sign;
 - (d) in any space designated as an Accessible Parking Space for which no valid permit is displayed;
 - (e) within any Fire Route;
 - (f) at any location in which the Vehicle is causing obstruction to the flow of traffic;
 - (g) at any location in which the Vehicle is causing an immediate safety concern to the public.
 - (h) At the discretion of a Municipal Law Enforcement Officer or Police

Officer if there is an offence under this by-law where a vehicle may be parked against the provisions of this by-law.

- (2) A Vehicle that has been removed in accordance with this Bylaw shall:
 - (a) be stored in a safe and suitable location; and
 - (b) be the financial responsibility of the registered Owner of the Vehicle for all costs of removal, care, and storage, imposed as a lien upon the Vehicle, which may be enforced in a manner provided by the Repair and Storage Liens Act, R.S.O. 1990, Chapter R.25, as amended.
- (3) A Vehicle parked or left standing on Private Property contrary to the posted Signage shall be deemed to be unlawfully placed without consent.
- (4) Posted Signage, referred to in Section 18 (3), shall include:
 - (a) a sign stating the conditions on which a Vehicle may be parked or left on the property; or
 - (b) a sign prohibiting the parking or leaving of a Vehicle on the property.
- (5) A Vehicle left on Private Property shall not be liable to any penalty or fees for removal and impoundment unless the property Owner for which the Motor Vehicle is unlawfully placed complains, in writing, to any person authorized to enforce this By-law.

19. SHORT TERM AND TEMPORARY EXEMPTIONS

- (1) Upon request, the Town may grant exemptions to individual residents from specific parking regulations that apply to a particular location.
- (2) Every short term exemption granted in accordance with section 19(1) of this By-law shall only be valid for:
 - (a) the location;
 - (b) the timeframe; and
 - (c) the duration
- (3) When used in accordance with the terms and conditions of its issue, a Temporary Parking Permit, provides exemption from those portions of this by-law referenced on the permit, to whom or which it was issued.
- (4) Persons prescribed as providing Home Health Care Services within the territorial limits of the Town are, subject to the conditions prescribed, exempt from sections 6(1)(d)(e)(hh), 6(6)(c), 11(1)(2)(a)(b), 11(4), 12(1)(a)(b)
- (5) When used in accordance with the terms and conditions of its issue, a Parking Permit provides exemption from those portions of this By-law referenced on the permit to whom it was issued.

20. GENERAL

- (1) This by-law where it applies to highway only applies to highways under the jurisdiction of the Corporation;
- (2) Schedules "A" to "Q" inclusive annexed hereto and forming part of this by-law and each entry in a column of such schedule shall be read in conjunction with the entry or entries across there from and not otherwise;
- (3) Members of the Police Department and Municipal Enforcement Officers for the Town of Cobourg shall have the duty of enforcing the provisions of this by-law;
- (4) The provisions of this by-law may be enforced by a Municipal Enforcement Officer or a person designated as a municipal law enforcement officer by the Town.
- (5) For the purposes of this by-law, where numbered plate issued pursuant to the provisions of Section 7 (1) of the *Highway Traffic Act R.S.O. 1990, chapter H.8* is exposed on a vehicle, the holder of the permit corresponding thereto shall be deemed to be the owner of that vehicle without the permit holders consent and the burden of proof is on the permit holder;

Penalties Created:

- (6) Each person who permits a VEHICLE to be parked, stopped or standing contrary to a part of this By-law that is designated pursuant to section 20(6) and each OWNER of that VEHICLE are, when given a Penalty Notice in accordance with the Town's AMP System By-law, liable to pay to the Town an administrative penalty in the amount specified in Schedule Q to this By-law, for each day or part of a day on which the contravention occurs or continues.

Designation re Administrative Penalties:

- (7) Section 20(6), Schedule Q and the parts of this By-law to which that Schedule relates are designated as parts of this By-law to which the Town's system established by the Town's AMP System By-law applies.


44. The following By-laws are hereby repealed:

030-2022

READ a first, time in Open Council this 23 day of May, 2023.



MAYOR



MUNICIPAL CLERK

SCHEDULES

SCHEDULE "A"

PARKING PROHIBITED WITHIN 15 METRES OF INTERSECTING STREET LINES

Burnham Street and Westwood Drive - on Burnham Street at north-west and south-west corners;

College Street and Chapel Street - College Street at north-east and south-east corners;

D'Arcy Street and Queen Street - on D'Arcy Street at north-west and south-west corners;

Division Street and Elgin Street - on Elgin Street at north-west and south-west corners;

Elgin Street and William Street - on Elgin Street at all corners;

Elgin Street and Ontario Street - on Elgin Street at all corners;

Elgin Street and Ontario Street - on Ontario Street at all corners;

King Street and Ball Street - on King Street at north-west corner;

University Avenue and D'Arcy Street on University Avenue at north-east and north-west corners;

University Avenue and D'Arcy Street on D'Arcy Street at north-west and south-west corners;

University Avenue and Ball Street - on University Avenue at north-east corner.

SCHEDULE "B"

NO PARKING ANYTIME

COLUMN 1		COLUMN 2		COLUMN 3
<u>Street</u>	<u>From</u>	<u>To</u>	<u>Side</u>	<u>Prohibited Time</u>
Abbott	Coronation north	King	East	(8:00 a.m. to 4:00 p.m., Monday to Friday, inclusive)
Abbott	Coronation north	King	West	(8:00 a.m. to 4:00 p.m., Monday to Friday, inclusive)
Adele	Ontario	Glenhare	North	
Albert	Ontario	Division	North	(8:00 a.m. to 4:00 p.m., Monday to Friday, inclusive)
Albert	Durham	13m W. of Hibernia	South	
Albert	13 m W. of Hibernia	Division	South	
Alder Road	Southern east/west leg		North	
Alder Road	Northern east/west leg		South	
Alder Road	North/south leg		West	
Alexandria Dr.	D'Arcy	198 Metres East of D'Arcy	South	
Anne	College	University	North	
Anne	College	University	West	
Ashland Ct	Parkview Hills	Cul-de-sac	East	
Ashland Dr	Parkview Hills	Parkview Hills	South & East	
Bagot	Lake Ontario	King	East	
Ball	King	C.P.R. Tracks	East	
Ball	(9 metres north of University)	(44 metres north of University)	West (2 hour limit)	
Ball's Lane	Ball	Spring	Both	
Ballantine	Division	Fairbanks	North	
Ballantine	Division	Chipping Park	South	
Baltimore Road	Division	North town limits	North	
Baltimore Road	Division	North town limits	South	
Battell	Huycke	End	West	

COLUMN 1		COLUMN 2		COLUMN 3
<u>Street</u>	<u>From</u>	<u>To</u>	<u>Side</u>	<u>Prohibited Time</u>
Battell	Sutherland	Cul-de-sac	West and Cul-de-sac	
Bay	Green	D'Arcy	South	
Bennett	Lonsberry	Rollings	East	
Blake	Ball	Mathew	North	
Ball	Ball	375 Ball	West	
Bond	James	University	East	
Boulton	Burnham	William	North	
Boulton	Burnham	Jeffrey	South	
Boggs Road	Elgin	Northam Industrial Park Entrance	Both sides	
Buck	George	Division	North	
Buck	George	Division	South	
Burke	Ball	Mathew	South	
Burnet	(Entire length of	South and West sides	and within turn arounds)	
Burnham	82 metres south of Heath	Carlisle	West	
Burnham	Elgin	White	East	
Burnham	Elgin	White	West	
Burnham	King	33.5 Metres North of Heath	East	
Burnham	King	Westwood	West	
Burwash	Burnham	Westwood	North	
Caddy Dr	One way eastbound		North	*See Schedule N
Caddy Dr	One way westbound		South	*See Schedule N
Caddy Dr	New Amherst	Wilkins Gate	South	
Carlisle	Burnham	New Amherst Blvd	South	
Carroll Cres	South leg of Carroll Cres	Ruttan Terrace	East	
Carroll Cres	South leg of Carroll Cres	East House Cres	South	
Carroll Cres	189 Carrol Crescent	203 Carrol Crescent	East	
Carroll Cres	Willmott St	Ruttan Terrace	South	

COLUMN 1		COLUMN 2		COLUMN 3
<u>Street</u>	<u>From</u>	<u>To</u>	<u>Side</u>	<u>Prohibited Time</u>
Cedermere	Tay Street	To end of Cedermere	East	
Cedermere Avenue	Tay Street	End of Tay Street	Both	*See Schedule P
Chapel	D'Arcy	Division	North	
Charles	Division	McGill	North	
Charles	59 Metres W.of McGill	McGill	South	(from 8:00 a.m to 6:00pm daily)
Charles Wilson Parkway	New Amherst Blvd	Prince of Wales Dr	North	
Chipping Park	Sutherland	Elgin	East	
Church	Bay	Perry	East	
Church	King	Queen	East	
Clyde	Ontario	End of Clyde	Both	*See Schedule P
College	South of Chapel	25 Metres north of Chapel	East	
College	King	University	West	
Conger Ave	Elgin	Cul-de-sac	East	
Cooper Ct	Willmott	Cul-de-sac	North	
Cottesmore	King	244 Metres north of King	East	
Cottesmore	University Ave E	Dead End	West	
Coverdale	King	Lakeshore	West	
Creighton Place	Carlisle	Leonard	West	
Curtis Cres	Carlisle	Carlisle	Inside	
D'Arcy	north boundary of Donegan Park	C.P.R. tracks	East	
D'Arcy	Kent	Alexandria	East	
D'Arcy	454 Metres South of Elgin	548 Metres South of Elgin	West	
D'Arcy	Perry	62 Metres North of King	West	
D'Arcy	Lake Ontario	Lakeshore Drive	East	
Delanty Road	Willmott	Carroll Cres	South	

COLUMN 1		COLUMN 2		COLUMN 3
<u>Street</u>	<u>From</u>	<u>To</u>	<u>Side</u>	<u>Prohibited Time</u>
Densmore Road	Division Street	290 Densmore Road	North	
Densmore Road	Division Street	Birchwood Trail	South	
Densmore Road	Parkview Hills Dr.	290 Densmore Road	South	
Densmore Road	330 Densmore Road	370 Densmore Road	North	
Denton Drive	Conger Ave	End	North & West	
Division	23 Metres north of Queen	20 Metres south of Queen	East	
Division	15 Metres north of Charles	Harbour	East	
Division	15 Metres north of Albert	30 Metres south of Albert	West	
Division	28 Metres South of King	30 Metres North of King	East	
Division	34.5 Metres South of King	30 Metres North of King	West	
Division	Covert	Baltimore Road	West	
Division	Covert	Baltimore Road	East	
Dodge	Willmott	Thompson	North & East	
Dodge	Willmott	Thompson	South & West	
Drewery	Bennett	Hayward	South & West	
Durham	Lake Ontario	King	East	
Durham	6 Metres in both southerly entrance	Directions from of Legion Village	West	
East House Cres	North end cul-de-sac	South leg of East House Cres	West	
East House Cres	South end cul-de-sac	South leg of East House Cres	South	
Elgin	Burnham	D'Arcy	North	
Elgin	Burnham	D'Arcy	South	
Elmer Hutton St	Charles Wilson Parkway	John Fairhurst Blvd	East	
Elizabeth	Burnham	Westwood	South	

COLUMN 1		COLUMN 2		COLUMN 3
<u>Street</u>	<u>From</u>	<u>To</u>	<u>Side</u>	<u>Prohibited Time</u>
Ernest Allen Blvd	New Amherst Blvd	Wilkins Gate	North	
Ewing	Westwood	Kerr	North	
Ewing	Westwood	Kerr	East	
Fairbanks	Ballantine	Chipping Park	West	
Fairbanks	Ballantine	Chipping Park	South	
First	Albert	King	East	
First	Albert	King	West	
Fisher	Charles Wilson Parkway	Kerr St	West	
Foote	North leg from Brook Rd S to Hamilton Ave	Hamilton Ave from South leg to Brook Rd S	South side and West side of the north leg of Foote Cres from Brook Road S to Hamilton Ave	
Forth	Tweed	King	East	
Forth Street	Tweed	End of Forth Street	Both	*See Schedule P
Fred Pratt	Hayward	Joseph Gale	East	
Frei	Northerly intersection with Glenhare	Elgin	South	
Frei	Northerly intersection with Glenhare	Elgin	East	
Furnace	Ontario	Ball	North	
George	King	C.P.R. Tracks	West	
George	King	University	East	
George	University	C.P.R. Tracks	East	(8:00 a.m. to 6:00p.m.) (Monday to Friday inclusive)
Glenhare	White	Southerly intersection with Frei	West	
Glenhare	White	Southerly intersection with Frei	North	

COLUMN 1		COLUMN 2		COLUMN 3
<u>Street</u>	<u>From</u>	<u>To</u>	<u>Side</u>	<u>Prohibited Time</u>
Gravelly	D'Arcy Street	Campbell Street	South	(Between the hours of 7:00 a.m. Monday to Friday from September to 9:00 a.m and 4:00 p.m. and 2:00 p.m. to 1 to June 30)
Green	Lake Ontario	Bay	East	
Green	Lake Ontario	King	West	
Greenly Dr	Carlisle	Leonard	West	
Greenly Dr	Leonard	Wilkins Gate	East and South	
Harden	Burnham	William	North	
Harden	Factory Creek	William	South	
Havelock Lane	James	Havelock	West	
Havelock Street	Spring	Division	South	
Hayward	Bennett	John Keefer Mahony	North	
Heath	Burnham	30.5 Metres East of Burnham	North	
Heath	Burnham	William	South	
Henderson Dr	Leslie	McMurdo Dr	West	
Henry	Chapel	University Avenue East	West	
Henry	King	Chapel	West	
Henry	Lake Ontario	Water	Both	
Henry	King	Water	East	
Hibernia	37.7 Metres south of King	53 Metres south of King	East	
Hibernia	Lake Ontario	King	West	
Hudson St	Carlisle St	Joan Chalovich Way	East	
Ivey Cres	Ashland Dr	Ashland Dr	West	
James	College Street	256.4 metres east of College St.	North	
James	25 metres west of D'Arcy St.	D'Arcy St.	North	
	Spring	D'Arcy	South	

COLUMN 1		COLUMN 2		COLUMN 3
<u>Street</u>	<u>From</u>	<u>To</u>	<u>Side</u>	<u>Prohibited Time</u>
James	Division	27 Metres East of Division	North	
James Sweetman Ave	Charles Wilson Parkway	John Fairhurst Blvd	East	
Jeffery	Boulton	End of Jeffery	Both	
Jex's Lane	James	Chapel	Both	
Joan Chalovich Way	New Amherst Blvd	Wilkins Gate	South	
John	Chapel	Spencer	West	
John Fairhurst Blvd (Westbound)	New Amherst Blvd	Wilkins Gate	South	*See Schedule N
John Fairhurst Blvd (Eastbound)	New Amherst Blvd	Wilkins Gate	North	*See Schedule N
John Keefer Mahony	Hayward	Cul-de-sac	North	
Joseph Gale	Fred Pratt	Hayward	North & West	
Kane Terrace	Prince of Wales Dr	London St	North	
Kerr St	Division St	D'Arcy	Both	
Kerr St	Westwood	New Amherst Blvd	Both	
King	William	Mathew	North	
King	Ball	24 Metres East of Ball	North	
King	Burnham	710 King St W	Both	
King	42 Metres West of Spring	48 Metres East of Spring	North	
King	26.1 Metres West of George	18.5 Metres East of George	North	
King	31 Metres West of Division	28.5 Metres East of Division	North	
King	61 Metres East of Division	College	North	
King	Henry	Normar Road	North	
King	Tracey Road	Hibernia	South	
King	19 Metres West of Third	18 Metres East of Second	South	

COLUMN 1		COLUMN 2		COLUMN 3
<u>Street</u>	<u>From</u>	<u>To</u>	<u>Side</u>	<u>Prohibited Time</u>
King	43 Metres West of Division	30 Metres East of Division	South	
King	McGill	Normar Road	South	
Lake	D'Arcy (From December to March)	Lake Ontario Inclusive)	North	
Lake	D'Arcy (From December to March inclusive)	Lake Ontario	South	
Lakeshore	Abbott Blvd	578 Lakeshore Dr	South	
Lakeshore	D'Arcy	41 Metres East of Abbott	South	
Lee's Ave	Caddy Dr	Joan Chaolvich Way	East	
Leonard St	London	Creighton Place	South	
Leslie St	Prince of Wales Dr	Wilkins Gate	South	
London St	Carlisle	Charles Wilson Parkway	East	
Lonsberry (north/south leg)	Lonsberry	Lonsberry	East	
Lonsberry (south leg)	Rollings	Lonsberry	North	
Lonsberry (north leg)	Rollings	Lonsberry	South	
Margaret	King	University	East	
Mathew	King	University	West	
McGill	King	Swayne	East	
McGill	Charles	Swayne	West	
McMurdo Dr	Prince of Wales Dr	Wilkins Gate	South	
Morgan	Lonsberry	Rollings	East	
Munroe	Division	Walton	North	
Munroe	Division	Clergy	South	

COLUMN 1		COLUMN 2		COLUMN 3
<u>Street</u>	<u>From</u>	<u>To</u>	<u>Side</u>	<u>Prohibited Time</u>
New Amherst Boulevard	Hwy. No. 2	Kerr	No parking except in designated lay-by's	No parking New Amherst to Carlisle lay-by's November 1 - March 31
Northwood Drive	Carlisle	Westwood	East and South	
O'Conner Ct	Densmore	Cul-de-sac	North & West	
Ontario	Albert Street	24 Metres South of King	East	
Ontario	43 Metres south of King	63 Metres South of King	West	
Ontario	25 Metres south of King	43 Metres south of King	West	
Ontario	63 Metres south of King	Tweed	West	
Ontario	Tweed	Lake Ontario	West	
Ontario	University Ave	401	Both	
Orange	Spring	George	North	
Orange	45 Metres West of George	167 Metres West of George	South	(8:00 a.m. to 5:30 p.m. Monday to Friday)
Orr	Durham	Hibernia	North	
Otto	Birchwood Trail	South leg of Otto	North	
Otto	Read	South leg of Otto	East	
Park	George	Division	South	
Parkview Hills Dr (South leg)	West of Ashland	Densmore	South	
Parkview Hills Dr	East of Ashland		East	
Patterson	Division	Dead End	Both	
Perry	Paul Currelly Way	D'Arcy	South	
Peter White	John Fairhurst	Kerr	West	
Prince of Wales	Carlisle	Kerr	West	
Queen	15 Metres in both directions	From park walkway	South	
Queen	McGill (15 Minute Parking Limit)	48 Metres West of McGill	South	

COLUMN 1		COLUMN 2		COLUMN 3
<u>Street</u>	<u>From</u>	<u>To</u>	<u>Side</u>	<u>Prohibited Time</u>
Queen	Church	D'Arcy	North	
Queen	Henry	D'Arcy	South	(from 2:00 a.m. to 7:00 a.m. daily)
Queen	McGill	Church	North	
Rankin	King	North Limit	East	
Rankin	King	North Limit	West	from 8:00 a.m. to 5:00 p.m. Monday to Friday inclusive)
Rayner	Burnham	Tillison	North	
Read	Birchwood	Otto	North	
Riddell	Rayner	60 Metres north of Rayner	West	
Riddell	Rayner	Tillison	East	(from 7:00 a.m. to 9:00 a.m. and 2:00 p.m. to 4:00 p.m. from September 1 to June 30)
			Monday to Friday	
Robinson Dr	Leslie St	Kerr St	East	
Rogers	Elgin	Carlisle	Both	
Rollings	Lonsberry	End	East & North	
Rutherford S	Carlisle	Leonard St	West	
Ruttan Terrace	Carroll	Ruttan Terrace bend	East	
Ruttan Terrace	Ruttan Terrace bend	Cul-de-sac (including Cul-de-sac)	North	
Samuel Angrove Ave	Charles Wilson Parkway	John Fairhurst Ave	East	
Second	Albert	King	East	
Sinclair	Harden	39 Metres North of Harden	East	
Sinclair	Harden	Boulton	West	
Smith Road	Caddy Dr	Joan Chalovich Way	East	
Spencer	Division	206 Metres East of Division	North	
Spring	East side from 17 metres north of James Street	40 metres south of James Street	East	

COLUMN 1		COLUMN 2		COLUMN 3
<u>Street</u>	<u>From</u>	<u>To</u>	<u>Side</u>	<u>Prohibited Time</u>
Spring	West side from 32 metres north of James Street	King Street	West	
Stirling Way	Brook Road N	Rollings	North	
Spring	King	Orange	East	
Suzanne Mess	King St	Osler Ct	East	
Sutherland	South leg		North	
Sutherland	North/South leg		West	
Sutherland	North leg		South	
Swayne	Division	College	North	
Swayne	Division	College	South	
Sydenham	Durham	Ontario	North	
Tay Street	Ontario	Dead End	North	
Tay Street	Ontario	End of Tay	Both	*See Schedule P
Third	Harbour	Albert	West	
Third	18 Metres South of King	King	West	
Third	Esplanade	Hibernia	North	
Third	Esplanade	Hibernia	South	
Thompson Tillison	Willmott Riddell Ave	Normar Road End	Both North/We st	
Tremaine	King	Monk	West	
Tremaine Terrace	Tremaine Street	End of Tremaine Terrace	both	*See Schedule P
Tweed	Forth	Ontario	North	
University	Factory Creek	Ontario	North	
University	George	John	North	
University	Margaret	Cottesmore	South	(Except from 26 metres east of George Street to 121 metres east of George Street between the hours of 7:30 a.m. and 12:30 p.m. on Sundays)
University	Roe Street	Ball Street	North	

COLUMN 1		COLUMN 2		COLUMN 3
<u>Street</u>	<u>From</u>	<u>To</u>	<u>Side</u>	<u>Prohibited Time</u>
Veronica	Division	Division	Both	
Victoria	University	Furnace	East	
Victoria	58 Metres North of Furnace	108 Metres North of Furnace	West	
Walton	King	Chapel	East	
Water	Henry	78.64 Metres West of Henry	North	
Water	Henry	78.64 Metres West of Henry	South	
Water	At Dead End		Both Sides	
Water	Henry	D'Arcy	South	
Weller St	East House	Cul-de-sac	North	
Westwood Cres	Carlisle	Carlisle	East	
Westwood Dr.	Burnham	Carlisle	North & East	
Westwood Dr.	206.5 Metres West of Burnham	Burnham	South	
Westwood Dr.	445 Westwood	483 Westwood	Both	
White Street	Burnham Street	90 Meters east of Burnham Street	Both	
White St	90 metres east of Burnham St	20 metres west of Riddell St	Both	(Except from 26 metres east of George Street to 121 metres east of George Street between the hours of 7:30 a.m. and 12:30 p.m. on Sundays)
White St	20 meters West of Riddell Street	Ontario Street	Both	
Wilkins Gate	Elgin St W	Caddy Dr	Both	
Wilkins Gate	Caddy Dr	Joan Chalovich	East	*See Schedule N
Wilkins Gate	Joan Chalovich	Kerr	No parking except in designated parking lay-bys	
William	King	Elgin	East	
William	King	Elgin	West	

COLUMN 1		COLUMN 2		COLUMN 3
<u>Street</u>	<u>From</u>	<u>To</u>	<u>Side</u>	<u>Prohibited Time</u>
William Harper	King	Joseph Gale	West	
Willmott	Highway No. 2	Normar Road	East / North	
Willmott	Normar Road	260 Metres West of Normar Rd.	South	
Willmott	Highway No. 2	790 Metres West of Normar Rd.	West & South	
Wilson	Carroll	Carroll	East/South	

SCHEDULE "C"

NO STOPPING PROHIBITION

COLUMN 1		COLUMN 2	
<u>Street</u>	<u>From</u>	<u>To</u>	<u>Side</u>
Albert	Second	Third	North
Albert	Second	Third	South
Alexandria	D'Arcy	207 metres east of D'Arcy Street	North
Birchwood Trail	Elgin	265 metres north of Elgin	East
Birchwood Trail	350 metres north of Elgin	New Densmore Road	East
Burnham	Elgin	401	Both
DePalma Rd.	Burnham St.	To End	Both
Division	CN Tracks	Highway 401	Both
Division	28 Metres south of King	30 Metres north of King	East
Division	34.5 Metres south of King	30 Metres north of King	West
Gravelly	D'Arcy Street	Campbell Street	North
King	19.5 Metres West of George	12.5 Metres east of George	North
King	31 Metres West of Division	28.5 Metres East of Division	South
King	19 Metres West of Third	18 Metres East of Third	South
King	32 Metres West of Division	30 Metres East of Division	South
King	28 Metres West of William	50 Metres East of William	North
King	26 Metres West of Ontario	24 Metres East of Ontario	South
Ontario	King	24 Metres South of King	East
Ontario	King	25 Metres South of King	West
Queen	McGill	61 Metres West of McGill	North

Strathy Rd.	Elgin St.	To DePalma Rd.	Both
Third	18 Metres South of King	King	West
Tremaine Terrace	Tremaine Street	End of Tremaine Terrace	Both Sides

From 11:00 P.M to 7:00 P.M March 1st to May 31st and September 1st to November 30th

William	King	56 Metres North of King	West
William	King	53 Metres North of King	East
William	CN Tracks	Elgin	Both Sides

SCHEDULE "D"

ONE HOUR PARKING ZONES

Schedule "D" (One Hour Parking Zones)			
COLUMN 1		COLUMN 2	
Street	Side	From	To
Covert	North	Division	George
Hibernia	East	King	Maria's Quay

SCHEDULE "E"
TWO HOUR PARKING ZONES

1. Covert Street Parking Lot (Lot #1)
2. Hibernia St Lot (Lot #2)
3. Queen McGill Parking Lot (Thanksgiving weekend to Victoria Day weekend only)
(Lot #3)
4. Third Street Parking Lot (Lot #4)
5. Trinity Church/Swayne St Parking Lot (Lot #5)
6. 202 Second Street Lot (Lot #6)
7. 185 Albert Street Lot (Thanksgiving weekend to Victoria Day weekend only) (Lot
#6A)
8. Market Square Lot (bounded on the West by Third Street, On the North by Victoria
Hall, on the east by Second Street and on the south by Albert Street.)

SCHEDULE "F"

TRUCK LOADING ZONES

Division Street - east side, commencing at a point 12.8m (42ft) north of King Street,
northerly for a distance of 18.7m (61ft)

Division Street -east side, commencing at a point forty-two 12.8m 42ft north of King Street
then northerly for a distance of 61 ½ft.

SCHEDULE "G"

SCHOOL ZONES

1. The east side of Durham Street from 20m (65ft) south of King Street West to 95m (311ft) south of King Street West.
2. The east side of Burnham Street from 26m (85ft) south of the H.E.P.C. Right-of-Way to 55m (180ft) south of the H.E.P.C. Right-of-Way.
3. The north side of Boulton Street from 14m (46ft) east of Burnham Street to 108m (354ft) east of Burnham Street.
4. The south side of University Avenue west from 26m (85ft) east of George Street to 74m (242ft) east of George Street.
5. The north side of Havelock Street from 53m (174m) east of George Street to 126m (413ft) east of George Street.
6. The north side of Albert Street from 6m (20ft) east of Durham Street to 83.5m (274ft) east of Durham Street.
7. The east side of D'Arcy Street from 37m (121ft) north of Alexandria Drive to 62m (203ft) north of Alexandria Drive.
 - i. 8.Cottesmore Ave – CR Gummow from 171m (561ft) south of University Ave W to 228m (748ft) south of King St E.

SCHEDULE "H"

PARKING METER AND PAY & DISPLAY ZONE - WATERFRONT

**ENFORCED – MONDAY TO SUNDAY FROM 9:00 A.M – 8:00 P.M
VICTORIA DAY WEEKEND TO THANKSGIVING WEEKEND.**

COLUMN 1		COLUMN 2	
Street	Side	From	To
Albert	South	Third	Division
Charles	South	McGill	Division
Church St	West	King St E	Queen
Church St	West	Queen	Perry
Chruch St	East	Queen	Perry
Division	West	Albert	Esplanade E Lot
Division	East	Queen	Division St Parking Lot
McGill	East	King St E	Queen
McGill	East	Queen	Charles
Queen	North	Division	McGill
Third	East	Albert St	Marina
Parking Lots			
Albert St Lot (#6A) – Victoria Day weekend to Thanksgiving weekend			
Centennial Pool Lot (#12)			
Division St S Lot (#13)			
Esplanade East Lot (#9)			
Esplanade West Lot (#10)			
Marina Lot (#14)			
McGill Lot (#3) - Victoria Day weekend to Thanksgiving weekend			
Paul Currelly Way			

Waterfront Parking Rates:

Type	Rate
Hourly Rate	\$5.00/hr
Daily Waterfront Pass	\$40.00/day
Resident Waterfront Season Pass	\$40.00/season
Beach Resident Waterfront Season Pass	\$20.00/season
Visitor Waterfront Season Pass	\$150.00/season

*all permits include HST

RESIDENT WATERFRONT SEASON PASSES, DAILY WATERFRONT PASSES AND VISITOR WATERFRONT SEASON PASSES VALID IN ALL AREAS LISTED ABOVE.

**ENFORCED: MONDAY TO SUNDAY FROM 9:00 AM – 8:00 PM, HOLIDAYS INCLUDED
VICTORIA DAY WEEKEND TO THANKSGIVING WEEKEND**

SCHEDULE "I"

PARKING METER/PAY & DISPLAY ZONES - DOWNTOWN

COLUMN 1		COLUMN 2	
Street	Side	From	To
Division	East	King St E	264 Division St
Division	East	Queen	King St E
Division	West	Albert	King St W
King St W	North	Ball	Spring
King St W	North	Spring	George
King St W	South	Hibernia	Third
King St W	North	George	Division
King St W	South	Second	Division
King St E	North	Division	McGill
King St E	South	Division	McGill
Second	West	King	Albert
Third	West	King	Albert
Third	East	Albert	King St W

Downtown Parking Rates:

Year	Rate:
2022	\$1.25
2023	\$1.75
2024	\$2.25

*3-hour maximum parking allotment

**all permits include HST

ENFORCED:

MONDAY TO SUNDAY FROM 8:00 AM – 6:00 PM, HOLIDAYS INCLUDED

SCHEDULE "J"

**WATERFRONT PASS HOLDER ONLY PARKING
EAST BEACH PARKING AREA**

Daily Waterfront Parking Pass, Resident Waterfront Season Passes, Visitor Waterfront Season Passes and Hourly Parking through HONK Mobile ONLY in the below locations:

- Queen Street from Church Street to D'Arcy Street
- Perry Street from Paul Currelly Way to D'Arcy Street
- Bay Street from Green Street to D'Arcy Street
- Green Street from King Street East to Bay Street
- Henry Street from King Street East to Water Street



WATERFRONT PASS HOLDERS or HOURLY PARKING THROUGH HONK MOBILE:

Daily Waterfront Pass	\$40.00/day
Resident Waterfront Season Pass	\$40.00/season
East Beach Resident Waterfront Season Pass	\$20.00/season
Visitor Waterfront Season Pass	\$150.00/season

*all permits include HST

ENFORCED:

MONDAY TO SUNDAY FROM 9:00 AM – 4:00 PM, HOLIDAYS INCLUDED

VICTORIA DAY WEEKEND TO THANKSGIVING WEEKEND

SCHEDULE "K"

RESIDENT WATERFRONT SEASON PASS/EAST BEACH WATERFRONT SEASON PASS, DAILY WATERFRONT PASS, VISITOR WATERFRONT SEASON PASS AND HOURLY PARKING BY HONK MOBILE

RESIDENT WATERFRONT SEASON PASSES

Residents of the Town of Cobourg can purchase a Resident Waterfront Season Pass from the Town of Cobourg via the Town's website or by visiting Town Hall, 55 King St W., Cobourg.

When purchasing a Resident Waterfront Season Pass online www.cobourg.ca/parking, residents are required to upload supporting documentation to verify their proof of residency; alternatively, if visiting Town Hall, residents are required to show proof of residency to municipal staff.

Two types of Resident Waterfront Season Passes will be available for purchase depending on the municipal address.

East Beach Resident Waterfront Season Pass

Residents in the new parking area established east of Victoria Park referred to as East Beach Parking Area and listed in Schedule "J" (and below) can purchase a season pass for **\$20.00**.

Queen Street from Church Street to D'Arcy Street
Perry Street from Paul Currelly Way to D'Arcy Street
Bay Street from Green Street to D'Arcy Street
Green Street from King Street East to Bay Street
Henry Street from King Street East to Water Street



Resident Waterfront Season Pass

All other residents that do not live in the above noted East Beach Parking Area can purchase a Resident Waterfront Season pass for **\$40.00**. *all permits include HST

DAILY WATERFRONT PASS

Daily Waterfront Passes are available for purchase on the Town's website www.cobourg.ca/parking or by visiting Town Hall, 55 King St W Cobourg; cost of a Daily Waterfront Pass is \$40/day. **Parking is offered on a first come first serve basis,**

although a pass may be purchased online ahead of visiting, parking spaces will not be reserved.

VISITOR WATERFRONT SEASON PASS

Visitor Waterfront Season Passes are available for purchase on the Town's website www.cobourg.ca/parking or by visiting Town Hall, 55 King St W Cobourg; cost of a Visitor Waterfront Season Pass is \$150/season. Parking is offered on a first come first serve basis, although a pass may be purchased online ahead of visiting, parking spaces will not be reserved.

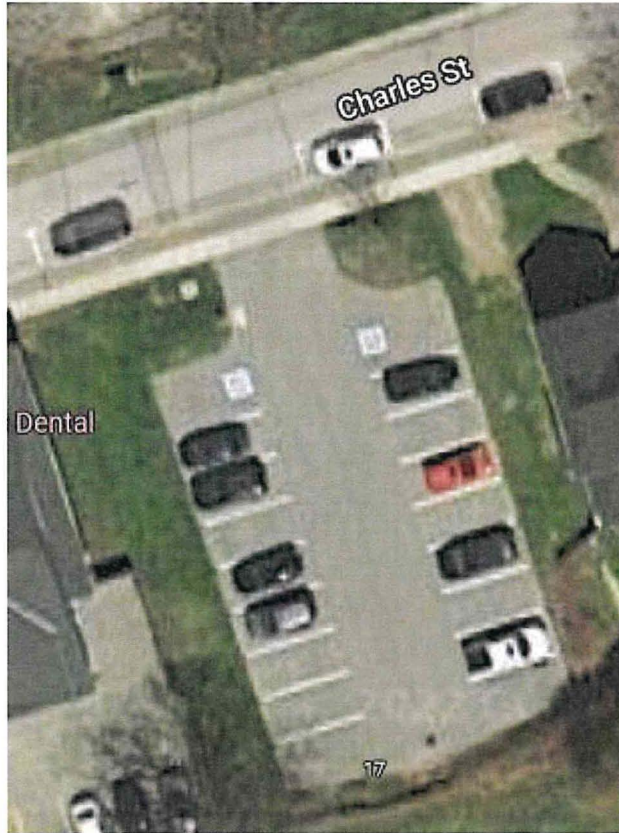
All Resident Waterfront Season Passes, Daily Waterfront Passes and Visitor Waterfront Season Passes are valid in all paid areas, metered or pay & display (lots or streets) noted in Schedule K and Schedule L.

SCHEDULE "L"

**CHARLES ST LOT
RESIDENT WATERFRONT SEASON PARKING PASSES ONLY**

Charles St Parking Lot located at 17 Charles St is reserved for Resident Waterfront Season Parking Pass Holders only.

All other vehicles will be ticketed and or towed at owners own expense.



RESIDENT WATERFRONT PASSES ONLY:

Resident Waterfront Season Pass	\$40.00/season
East Beach Resident Waterfront Season Pass	\$20.00/season

*all permits include HST

ENFORCED:

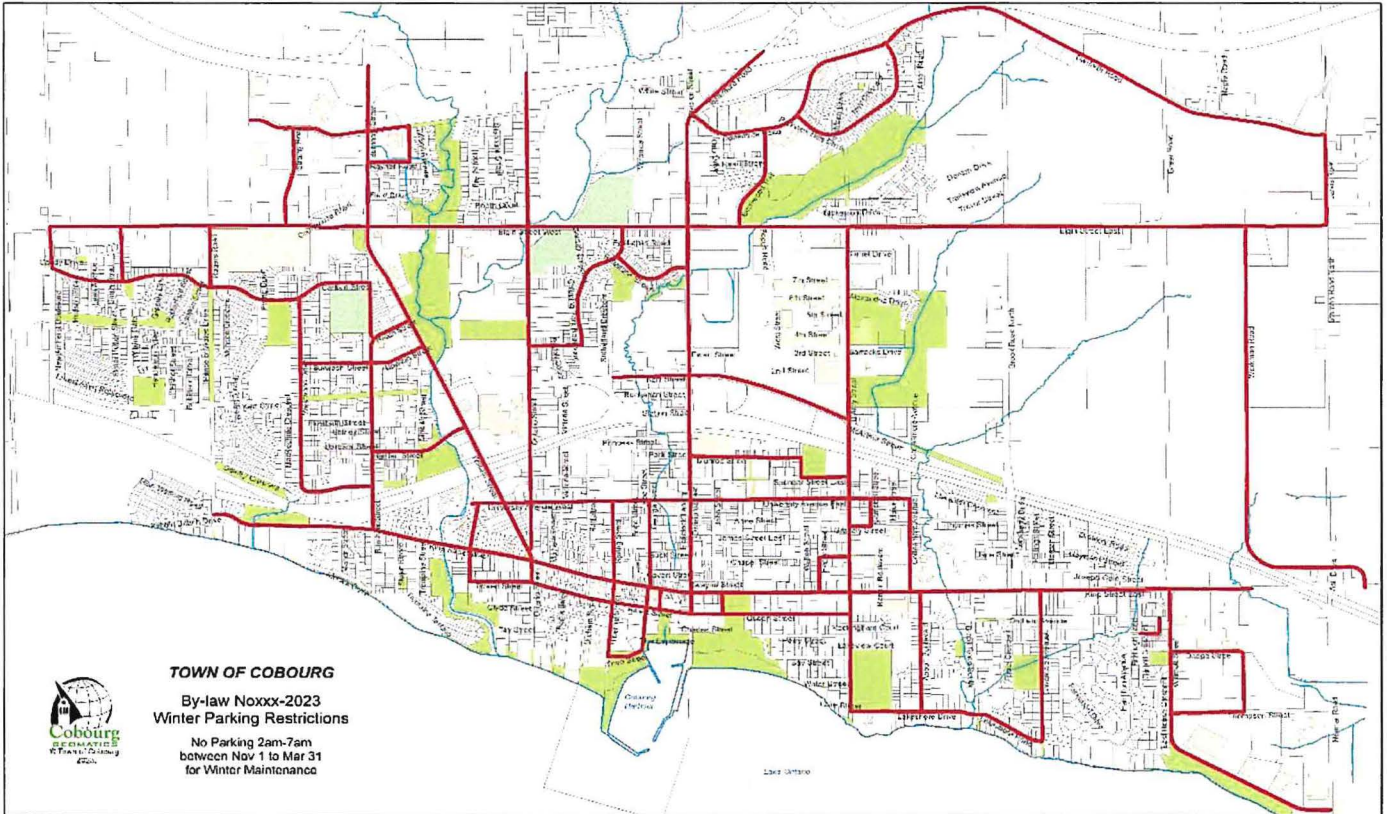
MONDAY TO SUNDAY FROM 9:00 AM – 8:00 PM, HOLIDAYS INCLUDED

VICTORIA DAY WEEKEND TO THANKSGIVING WEEKEND

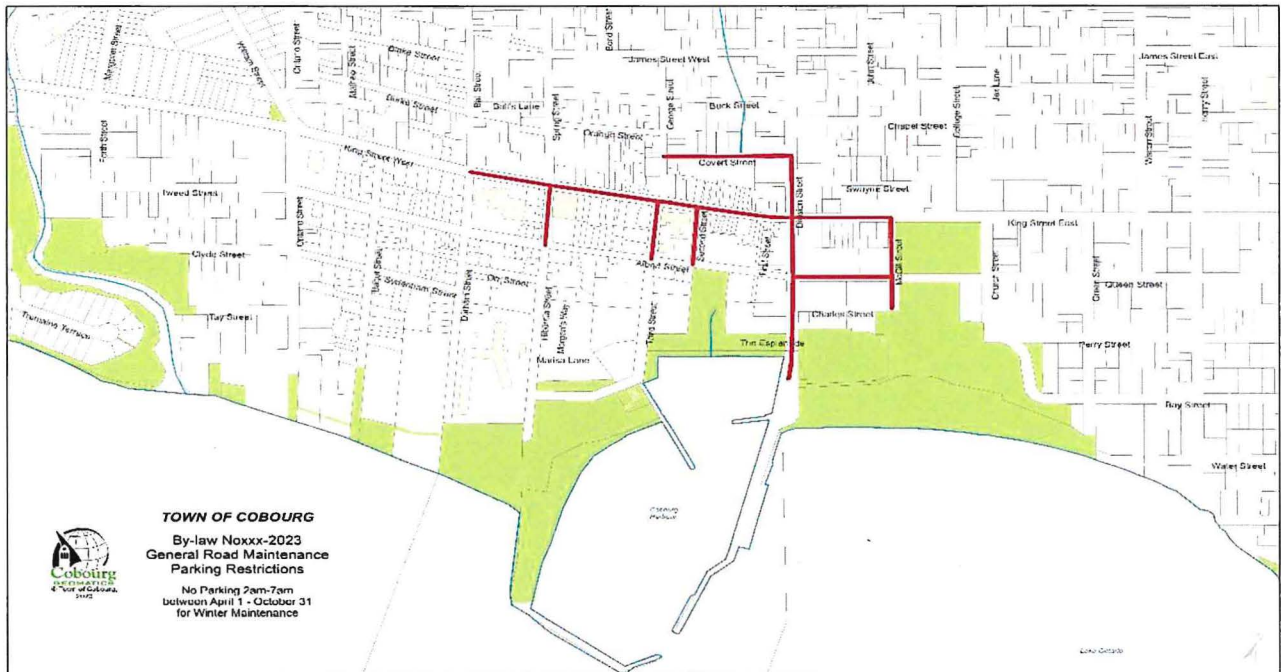
SCHEDULE "M"

No Parking between the hours of 2:00 a.m. and 7:00 a.m. from November 1 to March 31st for Winter Maintenance; and,

All collector and arterial roads as designated by the Town of Cobourg Winter Parking Map.



No Parking between the hours of 2:00 a.m. and 7:00 a.m. from April 1 to October 31st for General Road Maintenance as designated by the Town of Cobourg General Road Maintenance Map:



General Road Maintenance – April 1 to October 31 2:00 a.m. to 7:00 a.m.

Street	From	To
Hibernia St	King St	Albert
Covert St	George St	Division
Division St	Covert St	Lake Ontario
King St	Ball St	McGill St
McGill St	King St	Charles St
Second St	King St	Albert St
Third St	King St	Albert St
Queen St	Division St	McGill St

SCHEDULE "N"

No Parking at all times between November 1 to March 31st for Winter Maintenance on the following cul-de-sacs and wide corners:

Armour Cres	Glen Watford Road
Ashland Court	Gummow Court
Battell Court	Hamilton Court
Battell Steet	Hennan St
Bayfield Court	Hooey Court
Bayview Cres	Jeffrey Cres
Beatty Crescent	Kerr St W of Division St (west end)
Booth Court	Lakeview Court
Burnet Drive	Mackechnie Crescent
Burnham Manor Court	Maher Cres
Burnham St	Marion St
Clarke Court	Munson Crescent
Conger Court	Nickerson Drive
Cooper Court	Norma St
Cornell Cres	O'Connor Court
Coronation Cres	Pebble Beach Road
Curtis Cres	Rockingham Court
Daintry Crescent	Ruth Street
Denton Drive	Ruttan Terrace
Duncan Court	Sandra Cres
East House Cres	Spragge Cres
Ewing Court	St. Lawrence Place
Ewing St	Tillison Ave
Fairbanks Road	Tremaine Terrace
Field Court	Weller Court
Fraser Court	Westwood Cres
Gillett Court	

***Parking is permitted on the roadway portion of a cul-de-sac, not permitted within the turning circle at the end.**

No parking at all times between November 1 to March 31 for winter maintenance on the following laneways, one-way streets, and lay-bys:

<u>STREET</u>	<u>FROM</u>	<u>TO</u>
<u>Havelock Lane</u>	<u>James St W</u>	<u>Havelock St</u>
<u>Balls Lane</u>	<u>Spring St</u>	<u>Ball St</u>
<u>Park Lane</u>	<u>Spencer St</u>	<u>Park St</u>
<u>Jex Lane</u>	<u>Chapel St</u>	<u>James St E</u>
<u>Caddy Drive (one-way eastbound/westbound)</u>	=	<u>Lees Ave</u>
<u>John Fairhurst</u>	<u>New Amherst</u>	<u>Wilkins Gate</u>
<u>New Amherst lay-by's</u>	<u>Elgin St W</u>	<u>Carlisle</u>

**“SCHEDULE O”
15 MINUTE PARKING AREAS**

No person shall park any vehicle in the following locations for a period of time any longer than 15 minutes:

- 1) Monday through Friday on the north side of Ball’s Lane, from Ball Street 9 metres east to the east property line of Junior Set Nursery School at 326 Ball Street.
- 2) In front of Marie Dressler House - 212 King Street West (2 spots).
- 3) In front of Cobourg Police Station – 107 King Street West (2 spots) as properly signed “Police Only”.
- 4) 15 Minute Designated Parking Area – Two (2) parking stalls located on Albert St in front of 53 Albert St.
- 5) 15 Minute Designated Parking Area – One (1) parking stall in front of 66 King St E.
- 6) On the south side of Queen Street from McGill Street to 48 metres west of McGill Street for a period of time any longer than 15 minutes;
- 7) McGill St parking lot located on the southerly portion of the parking lot (2 spots) as properly signed “15-minute parking”.

SCHEDULE "P"

FISHING SEASON PARKING RESTRICTIONS

No parking 11:00 p.m. to 7:00 a.m. March 1st to May 31st and September 1st to November 30th

Street	From	To	Side
Cedermere	Tay	End of Tay	Both
Clyde	Ontario	End of Clyde	Both
Forth St	Tweed	End of Forth	Both
Tay	Ontario	End of Tay	Both
Tremain Terrace	Tremaine St	End of Tremaine Terrace	Both



SCHEDULE "Q":

Administrative Penalties

Item	Short Form Wording	By-law	Penalty
1.	Park Facing Wrong Direction	Section 5 (1) (a)	\$40.00
2.	Park more than 30cm (12 inches) from Curb	Section 5 (1) (b)	\$40.00
3.	Fail to Park Parallel to Curb	Section 5 (1) (c)	\$40.00
4.	Park in Angle Parking Outside of 45 degrees designated area	Section 5 (2)	\$40.00
5.	Park on Boulevard	Section 6 (1) (a)	\$40.00
6.	Park Blocking Driveway	Section 6 (1) (b)	\$100.00
7.	Park Causing Obstruction	Section 6 (1) (c)	\$40.00
8.	Park between Hours of 2:00 A.M and 6:00 A.M. -Winter	Section 6 (1) (d)	\$75.00
9.	Park between Hours of 2:00 A.M and 6:00 A.M. - Maintenance	Section 6 (1) (e)	\$75.00
10.	Park on a cul-de-sacs and wide corners between November 1 st and March 31 st for Winter Maintenance.	Section 6 (1) (f)	\$75.00
11.	Park within 152m of firefighting apparatus	Section 6 (1) (g)	\$75.00
12.	Park within 9m of a non-signalized Intersection	Section 6 (1) (h)	\$40.00
13.	Park within 15m of a Signalized Intersection	Section 6 (1) (i)	\$40.00
14.	Park with 3m of a Fire Hydrant	Section 6 (1) (j)	\$100.00
15.	Park within 9m of a Crosswalk	Section (6) (1) (k)	\$40.00
16.	Park on or over a Crosswalk	Section (6) (1) (l)	\$40.00
17.	Park on a Bridge	Section (6) (1) (m)	\$40.00

Item	Short Form Wording	By-law	Penalty
18.	Park on a Median	Section (6) (1) (n)	\$40.00
19.	Park within a Turning Circle	Section (6) (1) (o)	\$40.00
20.	Double Park	Section (6) (1) (p)	\$50.00
21.	Park Displaying Vehicle for Sale	Section (6) (1) (q)	\$40.00
22.	Park without valid Insurance	Section (6) (1) (r)	\$40.00
23.	Parked while washing or repairing Vehicle	Section (6) (1) (s)	\$40.00
24.	Park Alongside Railway Tracks	Section (6) (1) (t)	\$40.00
25.	Park Obstructing previously Parked Vehicle	Section (6) (1) (u)	\$40.00
26.	Park within Turning Basin	Section (6) (1) (v)	\$40.00
27.	Park causing Obstruction to Building	Section (6) (1) (w)	\$40.00
28.	Park within 9m of a T-Intersection	Section (6) (1) (x)	\$40.00
29.	Park within 15m of Authorized Sign Intersection	Section (6) (1) (y)	\$40.00
30.	Park within 30m of traffic signal Intersection	Section (6) (1) (z)	\$40.00
31.	Park within 15m of a dead-end roadway	Section (6) (1) (aa)	\$40.00
32.	Park within 15m of a walkway or path connected to a highway with a sidewalk on the opposite side of the highway	Section (6) (1) (bb)	\$40.00
33.	Park within an Unauthorized Area	Section (6) (1) (cc)	\$100.00

Item	Short Form Wording	By-law	Penalty
34.	Park unattended Vehicle on East Pier	Section (6) (1) (dd)	\$50.00
35.	Park within 30m of Fire Hall Entrance	Section (6) (1) (ee)	\$50.00
36.	Park within 24m of bus stop	Section (6) (1) (ff)	\$40.00
37.	Within 15m of intersecting street lines set out in Schedule "A"	Section (6) (1) (gg)	\$40.00
38.	Park Overnight between 11:00 P.M. and 6:00 A.M. as set out in Schedule "H"	Section (6) (1) (hh)	\$160.00
39.	Park in Reserved Parking for Police Service	Section (6) (1) (ii)	\$40.00
40.	Park Commercial Vehicle on Street	Section 6 (2)	\$40.00
41.	Park Trailer on Street	Section 6 (3)	\$40.00
42.	Park within 15m of Crosswalk – same side	Section 6 (5) (a)	\$40.00
43.	Park within 15m of Crosswalk – opposite side	Section 6 (5) (b)	\$40.00
44.	Unauthorized Parking on Private Parking	Section 6(6) (a)	\$40.00
45.	Unauthorized Parking on Town Property	Section 6(6) (b)	\$40.00
46.	Park during Restricted Time	Section 6(6) (c)	\$40.00
47.	Stop within intersection	Section 7 (1) (a)	\$40.00
48.	Stop within 9m of a pedestrian crossover	Section 7 (1) (b)	\$40.00
49.	Stop within 9m of School Crossing Guard	Section 7 (1) (c)	\$40.00

Item	Short Form Wording	By-law	Penalty
50.	Stop Causing Obstruction	Section 7 (1) (d)	\$40.00
51.	Stop Contrary to Traffic Control Device	Section 7 (1) (e)	\$40.00
52.	Stop Parallel to Vehicle	Section 7 (1) (f)	\$40.00
53.	Stop on a Bridge	Section 7 (1) (g)	\$40.00
54.	Stop within a Tunnel or Overpass	Section 7 (1) (h)	\$40.00
55.	Stop Obstructing Traffic	Section 7 (1) (i)	\$40.00
56.	Stop within turning circle	Section 7 (1) (j)	\$40.00
57.	Stop within unauthorized area	Section 7 (1) (k)	\$50.00
58.	Park/stop Vehicle - Failure to display accessible permit	Section 8 (1) (a)	\$300.00
59.	Park/stop Vehicle - Unauthorized use of accessible permit	Section 8 (1) (b)	\$300.00
60.	Park contrary to No Parking Signs	Section 9 (1)	\$50.00
61.	Stop contrary to No Stopping Signs	Section 10 (1)	\$50.00
62.	Park - Fail to pay to park in Parking Meter/Pay and Display Lot at the Waterfront Parking Area	Section 11 (1) (a)	\$160.00
63.	Park expired time at a Parking Meter or Pay and Display area	Section 11 (1) (b)	\$160.00
64.	Park - Fail to pay to park in Parking Meter/Pay and Display Lot at the Downtown Parking Area	Section 11 (2) (a)	\$40.00
65.	Park expired time at a Parking Meter or Pay and Display area	Section 11 (2) (b)	\$40.00
66.	Park - Deposit unlawful tender into Parking Meter or Pay and Display	Section 11 (3)	\$40.00
67.	Park longer than specified maximum length of time indicated on Parking Meter or Pay and Display	Section 11 (4)	\$40.00

Item	Short Form Wording	By-law	Penalty
68.	Park Outside Designated Parking Space	Section 11 (5)	\$40.00
69	Park – Fail to purchase hourly parking or waterfront pass in East Beach Area – Schedule J	Section 11 (6)	\$160
70	Park expired time at a space in East Beach Area – Schedule J	Section 11(7)	\$160
71.	Park in a parking space longer than 60 Minutes without a Parking Permit	Section 12 (1) (a)	\$40.00
72.	Park in a parking space longer than 120 Minutes without a Parking Permit	Section 12 (1) (b)	\$40.00
73.	Park in reserved parking for Mayor	Section 13 (1) (a)	\$40.00
74.	Park in reserved parking for Electric Vehicles without using Charging Station	Section 13 (1) (b)	\$40.00
75.	Park in a signed area for longer than 15 minutes	Section 13 (2)	\$40.00
76.	Park in a signed area for longer than twelve(12) hours	Section 13 (3)	\$40.00
77.	Park in a Resident Only Parking Lot without Valid Permit	Section 13 (4)	\$160.00
78.	Park in a Signed Truck Loading Zone	Section 14 (1)	\$40.00
79.	Park obstructing removal of Snow	Section 15 (1) (a)	\$75.00
80.	Park without valid Licence Plate	Section 15 (1) (b)	\$40.00
81.	Park in operable vehicle on highway	Section 15 (1) (c)	\$40.00
82.	Park on Residential Street longer than twelve(12) hours	Section 15 (2)	\$50.00
83.	Park during a declared snow event.	Section 16 (1)	\$75.00
84.	Park Overweight Vehicle in Residential area.	Section 17 (1)	\$40.00
85	Park Recreational Vehicle on a highway	Section 17(3)	\$40