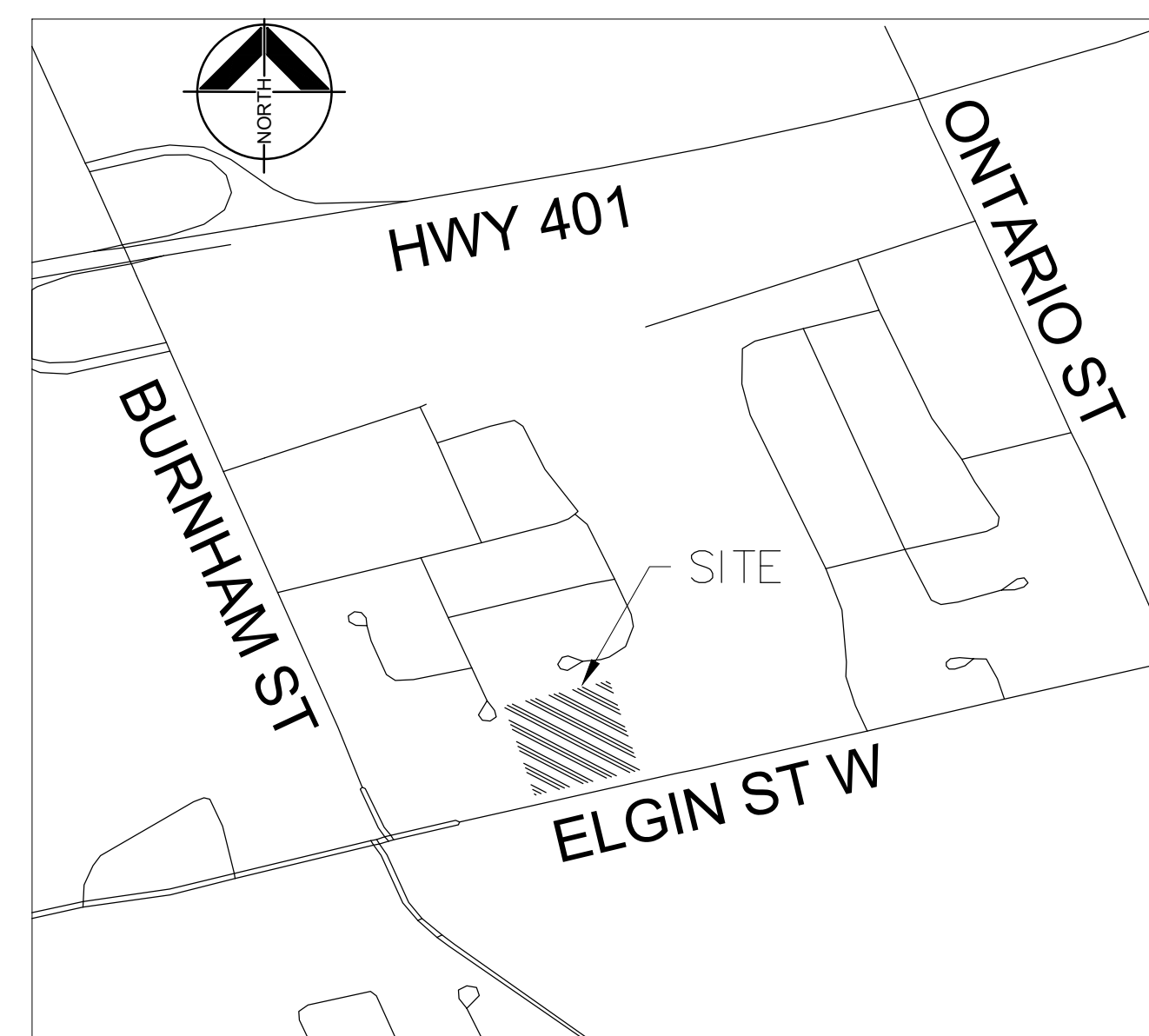




# TERRY FOX SWM POND CLEANOUT CONTRACT No. CO-21-03 PWD

TERRY FOX SWM POND



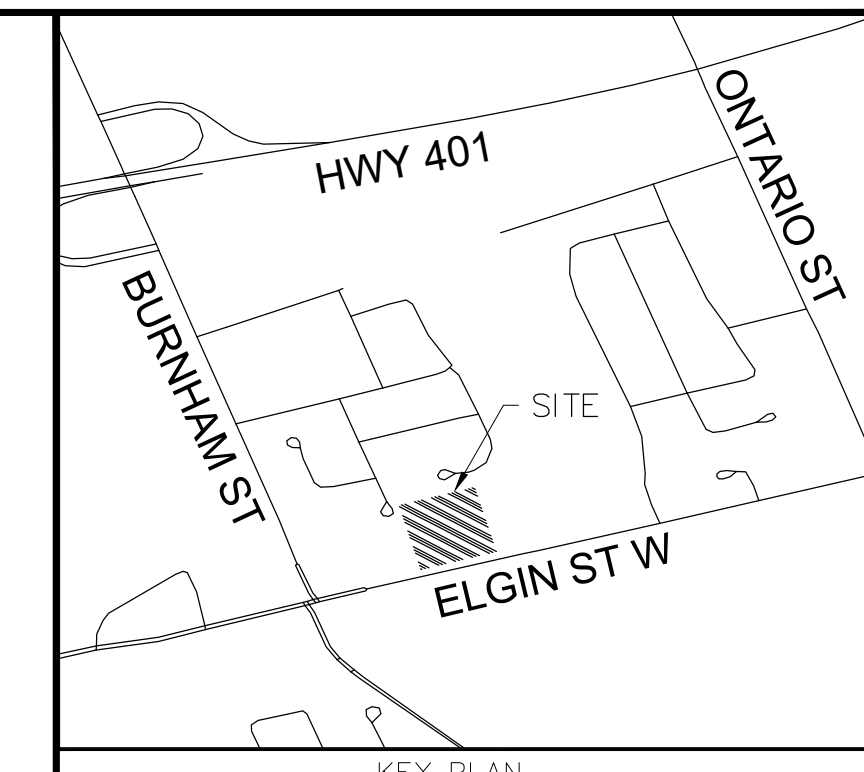
KEY MAP  
N.T.S.

## DRAWING INDEX

| DRAWING No.        | TITLE                            |
|--------------------|----------------------------------|
| 1                  | NOTES AND DETAILS                |
| 2                  | SITE PLAN                        |
| REFERENCE DRAWINGS |                                  |
| GP8                | STORMWATER DETENTION POND        |
| PP11               | OUTLET - DETENTION POND EASEMENT |



ISSUED FOR TENDER



KEY PLAN

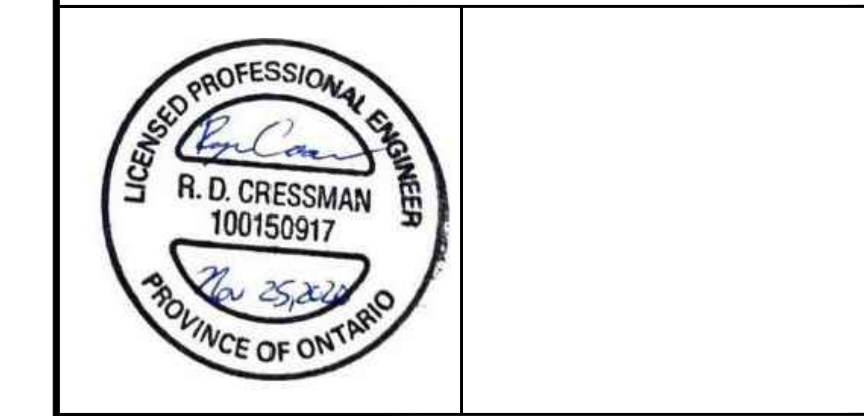
BM1  
EAST CORNER OF TRANSFORMER FOOTING 97.852



IT IS THE RESPONSIBILITY OF THE CONTRACTOR TO INFORM THEMSELVES OF THE EXACT LOCATION OF, AND ASSUME ALL LIABILITY FOR DAMAGE TO ALL UTILITIES SERVICES AND STRUCTURES WHETHER ABOVE GROUND OR BELOW GRADE BEFORE COMMENCING THE WORK. SUCH INFORMATION IS NOT NECESSARILY SHOWN ON THE DRAWING, AND WHERE SHOWN, THE ACCURACY CANNOT BE GUARANTEED.

WITH THE SOLE EXCEPTION OF THE BENCHMARK(S) SPECIFICALLY DESCRIBED FOR THIS PROJECT, NO ELEVATION INDICATED OR ASSUMED HEREON IS TO BE USED AS A REFERENCE ELEVATION FOR ANY PURPOSE.

ALL DIMENSIONS AND INFORMATION SHALL BE CHECKED AND VERIFIED ON THE JOB AND ANY DISCREPANCIES MUST BE REPORTED TO THE MUNICIPALITY BEFORE COMMENCING THE WORK. DRAWINGS ARE NOT TO BE SCALED.



| NO. | DATE       | BY | ISSUES / REVISIONS   |
|-----|------------|----|----------------------|
| 2   | 25/11/2020 | RC | RE-ISSUED FOR TENDER |
| 1   | 15/01/2020 | RC | ISSUED FOR TENDER    |



PROJECT:

**TERRY FOX SWM POND CLEANOUT**

DRAWING:

**NOTES AND DETAILS**

| DRAWN BY:     | CHECKED BY:   | PROJECT     |
|---------------|---------------|-------------|
| K. LUKAWIECKI | R. CRESSMAN   | C14-0305    |
| DESIGNED BY:  | APPROVED BY:  | DRAWING No. |
| R. CRESSMAN   | S. MAY        | 1           |
| SCALE:        | DATE:         |             |
| NTS           | NOVEMBER 2020 |             |

ISSUED FOR TENDER

**GENERAL STAGING AND CONSTRUCTION NOTES**

**STAGE 1 - ACCESS, DEWATERING & FLOW MAINTENANCE**

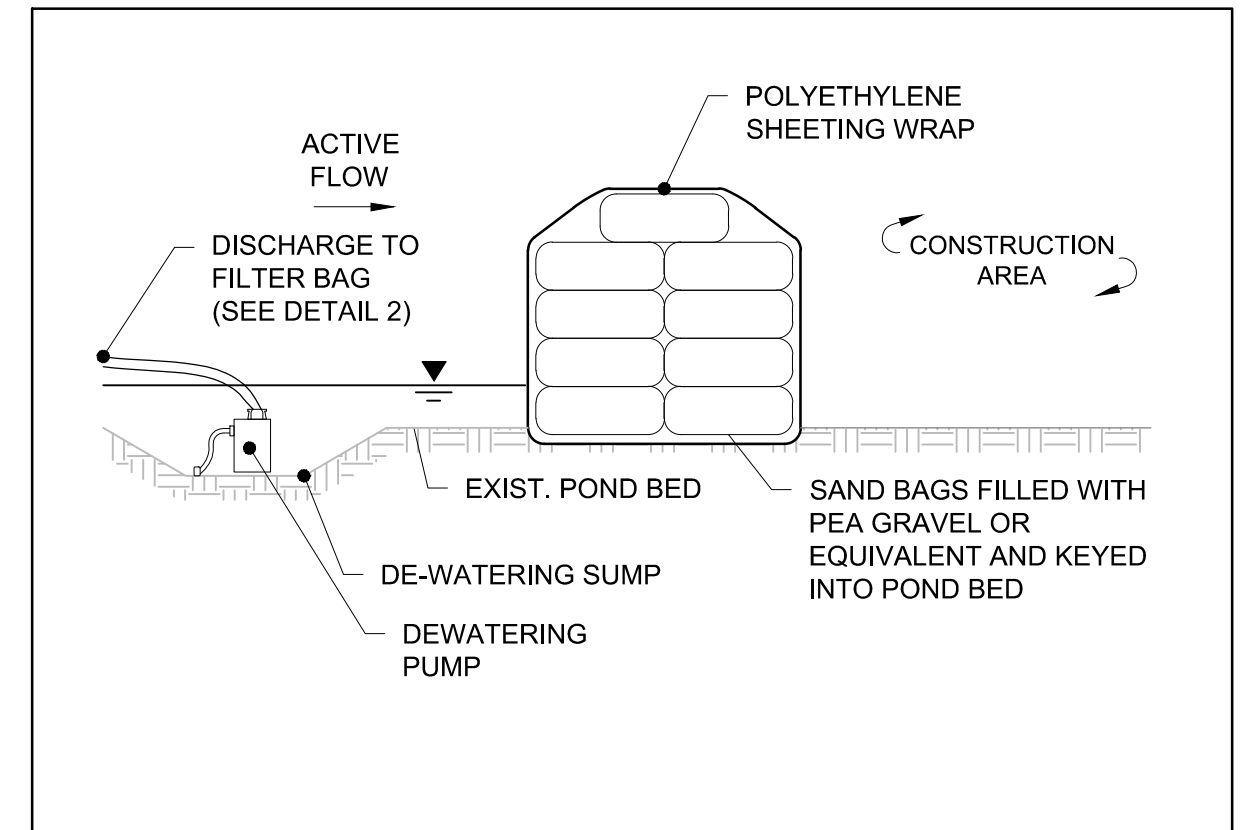
- PREPARE AND SECURE SITE ACCESS FROM FRASER COURT. PROTECT EXISTING ASPHALT AND CONCRETE SURFACES & SIDEWALK. TRIM BRANCHES AND REMOVE VEGETATION ALONG MAINTENANCE ACCESS ROUTE AS REQUIRED TO ALLOW EQUIPMENT PASSAGE WITHOUT DAMAGING EXISTING TREES AND SHRUBS. USE SHARP EQUIPMENT TO PROVIDE A CLEAN CUT OF BRANCHES AND ROOTS.
- PREPARE ACCESS ROUTE TO FACILITATE EQUIPMENT AND MATERIAL ACCESS INCLUDING EXCAVATION, WOVEN GEOTEXTILE, 50mm CRUSHED LIMESTONE AND LIMESTONE SCREENINGS.
- ORGANIZE AND SCHEDULE THE WORKS FOR SUFFICIENT SUCCESSIVE DAYS OF FORECASTED DRY WEATHER CONDITIONS.
- ASSEMBLE COFFER DAMS AT INLETS TO ISOLATE FLOWS FROM PHASED WORK AREAS.
- INSTALL APPROPRIATELY SIZED FISH SCREEN IN A TRAPEZOIDAL CONFIGURATION IN FRONT OF OUTLET STRUCTURE AT WATER QUALITY RISER.
- DEWATERING SCHEMATIC TO BE PROVIDED TO CONTRACT ADMINISTRATOR 10 DAYS PRIOR TO COMMENCING DEWATERING.
- DRAW DOWN POND WATER LEVEL IN COORDINATION WITH ENVIRONMENTAL CONSULTANT RETAINED BY THE TOWN OF COBOURG.
- COLLECTION OF STRANDED FISH/WILDLIFE FROM POND. FISH SHALL BE HUMANELY DISPOSED OF ACCORDING TO MNRD DIRECTION. OTHER WILDLIFE SHALL BE APPROPRIATELY RELOCATED BY SPECIALIZED ENVIRONMENTAL CONSULTANT (TO BE COMPLETED BY OTHERS).
- PUMP ANY WATER (IF REQUIRED) TO FILTER BAGS LOCATED AT LEAST 30m FROM CREEK. PERIODICALLY PUMP WATER FROM THE POND TO FILTER BAGS AS REQUIRED TO KEEP THE POND DRY.

**STAGE 2 - SEDIMENT REMOVAL**

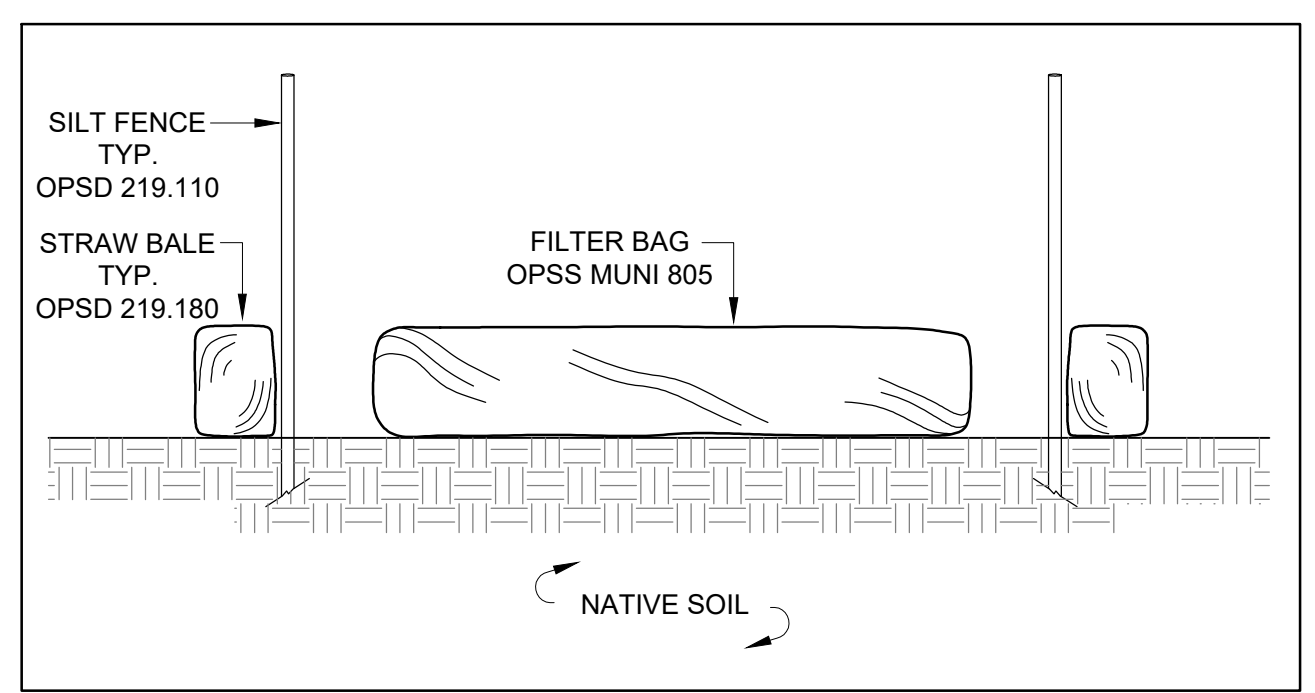
- PREPARE A SECURED AREA FOR SEDIMENT CONTAINMENT, DRYING AND/OR PROCESSING. SEDIMENT PROCESSING AREA MUST DRAIN TOWARDS THE SWM POND.
- REMOVE SEDIMENT FROM SWM POND & FOREBAY AND RESTORE TO ORIGINAL GRADES (REFER TO DWG GP8).
- CLEAR SEDIMENT DEBRIS FROM INLET AND OUTLET PIPES.
- CLEANOUT CULVERTS CONNECTING FOREBAY TO POND.

**STAGE 3 - SITE MAINTENANCE & SEDIMENT DISPOSAL**

- REMOVE BULK DEBRIS AND GARBAGE FROM SWM FACILITY.
- WATER QUALITY OUTLET - SEDIMENT IS PLUGGING THE WATER QUALITY RISER. REMOVE EXISTING CLEARSTONE JACKET SURROUNDING THE CSP RISER. REMOVE THE DAMAGED 1500mm CSP WATER QUALITY RISER AND LOCKABLE GRATE AND REINSTATE HICKENBOTTOM PVC DRAIN. REMOVE AND REPLACE THE CONCRETE SLAB FOUNDATION. INSTALL NEW 1,500mm CSP RISER. PLACE CLEAR STONE JACKET AROUND THE CSP WITH 50-80mm GRADED CLEAR STONE. REFER TO REFERENCE DRAWING PP11.
- TEST SEDIMENT USING THE TEST METHOD FOR THE DETERMINATION OF "LIQUID WASTE" (SLUMP TEST) AS DETAILED IN SCHEDULE 9 OF R.R.O 1990, Reg. 347 TO DETERMINE WHEN MATERIAL IS SUFFICIENTLY DRY AND CAN BE DISPOSED OF AS SOLID WASTE IN ACCORDANCE WITH R.R.O 1990, Reg. 347.
- REMOVE AND DISPOSE OF SOLIDIFIED SEDIMENT AT AN APPROVED LOCATION. TRANSPORT SEDIMENT BY APPROVED VENDORS AND EQUIPMENT.
- DECOMMISSION THE SEDIMENT CONTAINMENT, DRYING, PROCESSING AREA.
- CLEAN EXISTING ACCESS PATHWAY AND ALL EQUIPMENT UTILIZED. ENSURE ALL WATER DRAINS TOWARDS THE POND.
- RESTORATION OF ALL DISTURBED AREAS WITH TOPSOIL AND SEED.



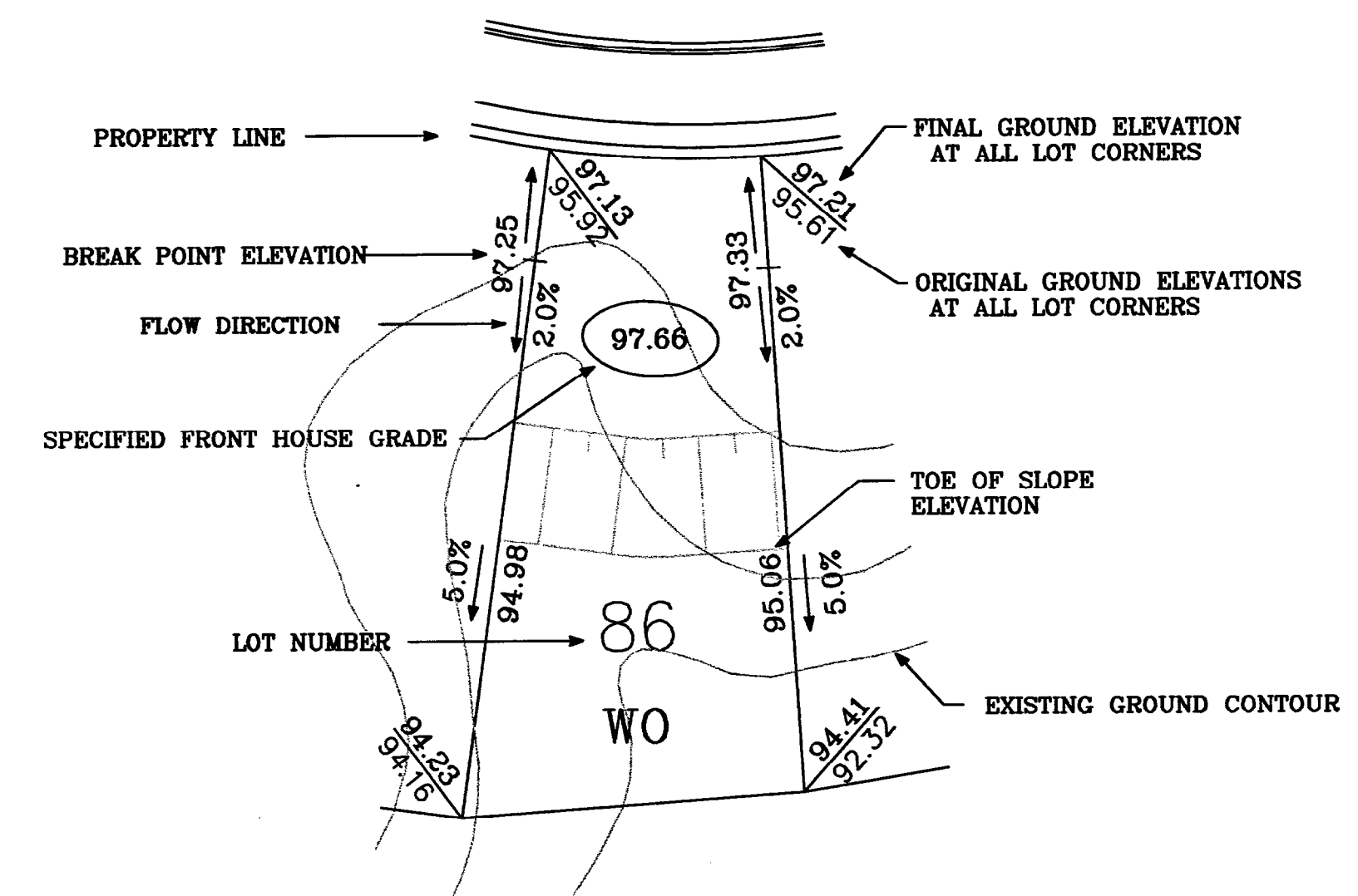
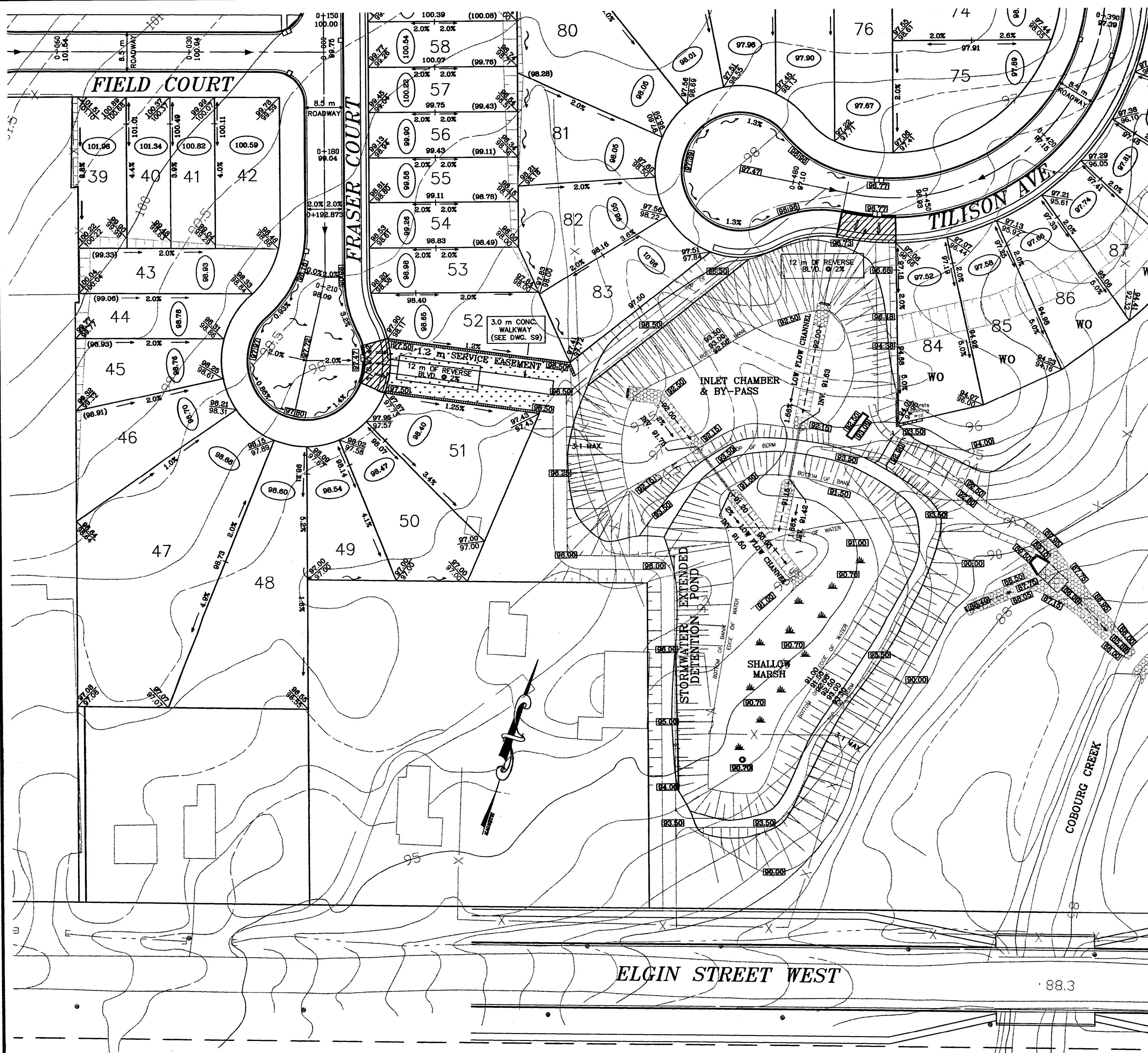
**DETAIL 1:  
TEMPORARY COFFER DAM DETAIL**  
N.T.S.



**DETAIL 2:  
SECTION FILTER BAG**  
N.T.S.

DATE: 09/09/2018 FILE: Z:\municipal\projects\C14-0305\enr\0305-enr\0305-enr.dwg

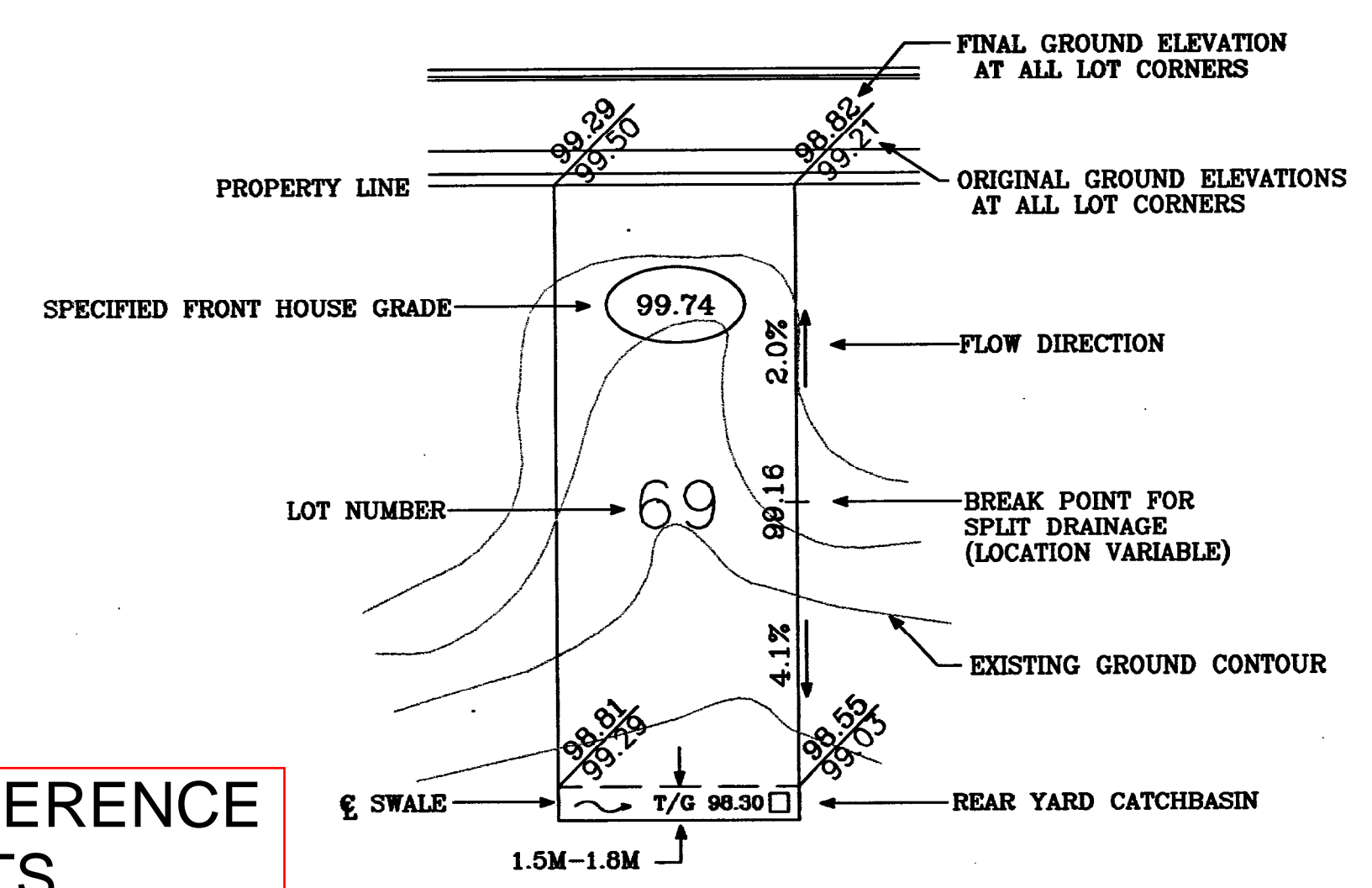




WALKOUT LOT (TYPICAL)

GRADING NOTES

1. LOTS TO BE ROUGH GRADED TO 450 mm BELOW FINISHED GRADE TO ALLOW FOR DISPOSAL OF BASEMENT EXCAVATION AND 100 mm TOP SOIL.
2. POND TO BE CUT TO FINISHED GRADE AND UTILIZED FOR SEDIMENT CONTROL DURING CONSTRUCTION (SEE DWGS. GP7, GP8, T1 & PP11)
3. BS - BACKSPLIT LOT
4. WO - WALKOUT LOT



SPLIT LOT DRAINAGE (TYPICAL)

FOR REFERENCE  
NTS

DRAWING  
GP8

MORRISON LAND DEVELOPMENT INC.  
(FORMERLY GEORGE WIMPY CANADA LIMITED)

DRAWN BY:  
RJP  
DESIGN BY:  
RJP

D.R. BARKER & ASSOCIATES LTD.  
CONSULTING ENGINEERS  
110 CHISHOLM STREET  
OAKVILLE, ONTARIO L6K 3H9

ELGIN HILLS ESTATES (WEST)  
TOWN OF COBURG  
COUNTY OF NORTHUMBERLAND  
GRADING PLAN

DATE: 25 FEB. 1993  
SCALE: 1:500 HOR  
DWG No.  
JOB No. 8923

