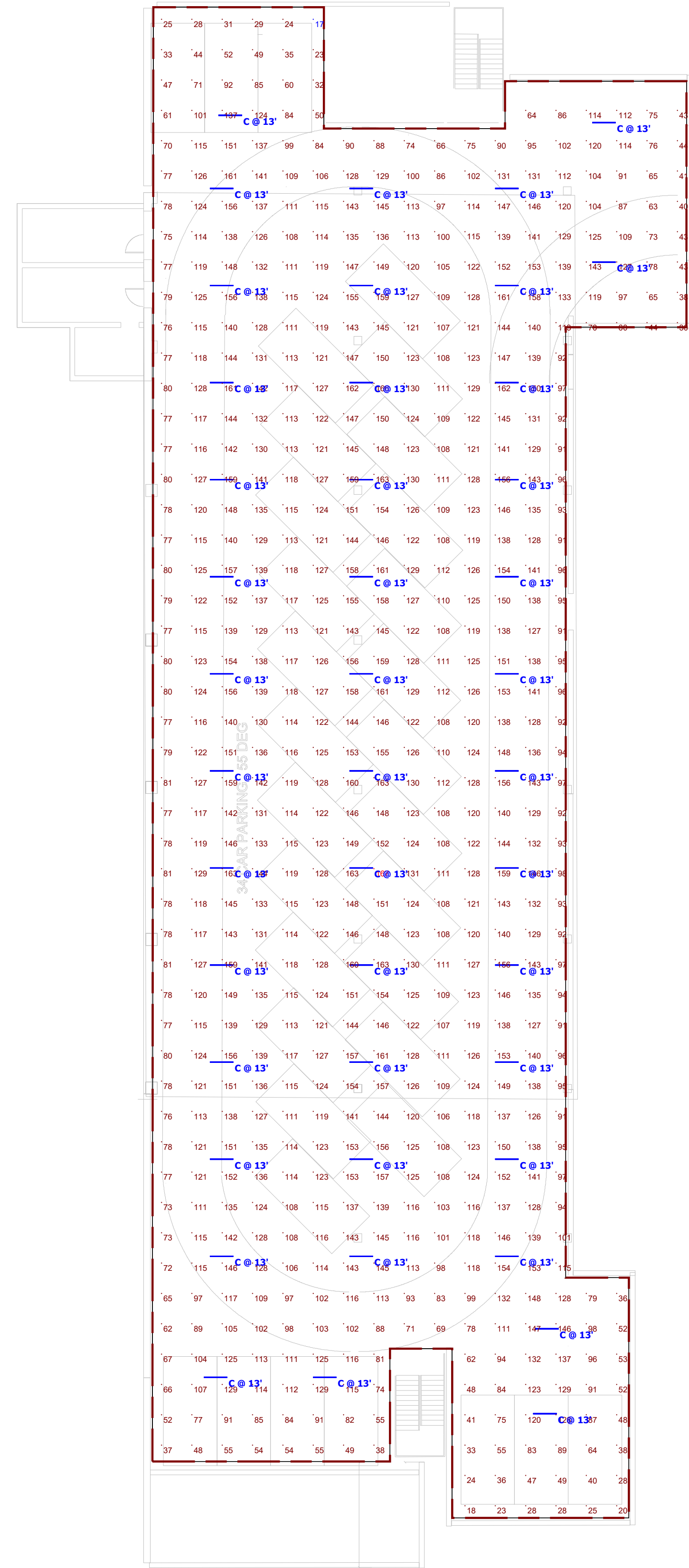
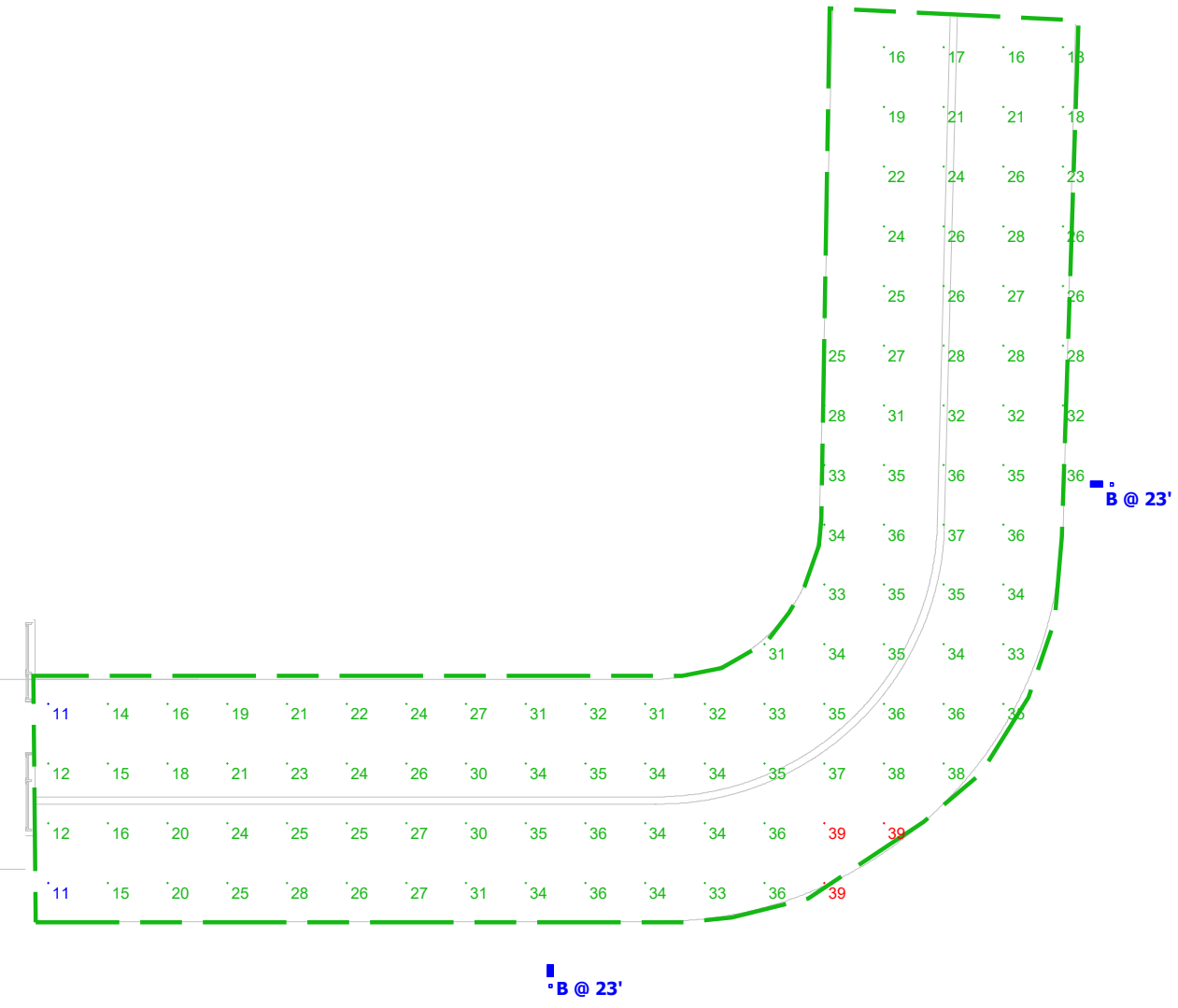
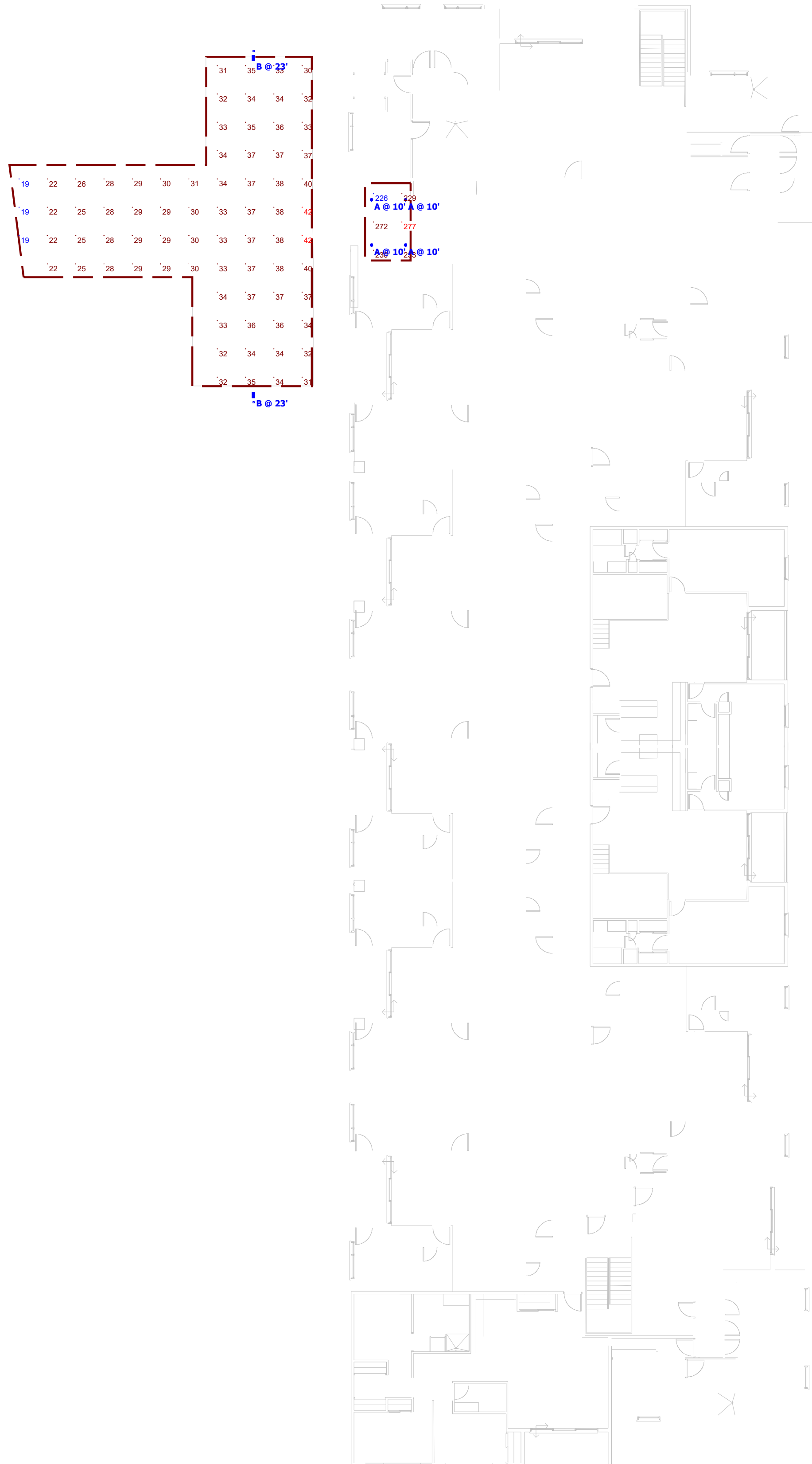


Symbol	Label	Quantity	Manufacturer	Catalog Number	Description	Lamp	Number Lamps	Filename	Lumens Per Lamp	Light Loss Factor	Wattage
○	A	4	EATON LIGHTING - HALO	HC620D010-HM612840-61MDW	HALO COMMERCIAL 6" ROUND, NEW CONSTRUCTION FRAME, WITH 6" MEDIUM DISTRIBUTION, WHITE TRIM	(1) HIGH LUMEN LED 80CRI / 4000K CCT ABSOLUTE PHOTOMETRY IS BASED ON CALIBRATION FACTORS CREATED USING LAB LUMEN STANDARDS IN GONIOPHOTOMETER WITH TEST DISTANCE OF 28.75 FEET	1	HC620D010-HM612840-61MDW (1).ies	1900	0.9	20
□	B	4	EATON - MCGRAW-EDISON (FORMER COOPER LIGHTING)	GLEON-AF-02-LED-E1-SL4-HSS	GALLEON AREA AND ROADWAY LUMINAIRE (2) TO CRI, 4000K, 1050mA LIGHT SQUARES WITH 16 LEADS EACH AND TYPE IV SPILL LIGHT ELIMINATOR OPTICS WITH HOUSE SIDE SHIELD Retail, Roadway, Sidewalk, Site, Street, Substation, Security, Corrosion Resistant, Vandal Resistant, Wet Location ABSOLUTE PHOTOMETRY IS BASED ON CALIBRATION FACTORS CREATED USING LAB LUMEN STANDARDS IN GONIOPHOTOMETER WITH TEST DISTANCE OF 28.75 FEET	(280) 4000K CCT, 80 CRI LEADS ABSOLUTE PHOTOMETRY IS BASED ON CALIBRATION FACTORS CREATED USING LAB LUMEN STANDARDS IN GONIOPHOTOMETER	32	GLEON-AF-02-LED-E1-SL4-HSS.ies	316	0.9	113
—	C	43	EATON - METALUX (FORMER COOPER LIGHTING)	4SLSTP5540DD-UNV	4FT LENSED LED STRIPLIGHT 5500 LM UV TEST IS SCALED FROM IESNA LM-79-08 TEST DATA (P29646-R2)	(280) 4000K CCT, 80 CRI LEADS ABSOLUTE PHOTOMETRY IS BASED ON CALIBRATION FACTORS CREATED USING LAB LUMEN STANDARDS IN GONIOPHOTOMETER	280	4SLSTP5540DD-UNV.ies	21	0.9	49.3

Description	Symbol	Avg	Max	Min	Max/Min	Avg/Min
King St. W. Entrance	+	28 lux	39 lux	11 lux	3.5:1	2.5:1
Parking garage	+	114 lux	167 lux	17 lux	9.8:1	6.7:1
Tremaine St. Entrance	+	32 lux	42 lux	19 lux	2.2:1	1.7:1
Vestibule	+	245 lux	277 lux	226 lux	1.2:1	1.1:1



Plan View  
Scale: 1" = 15ft