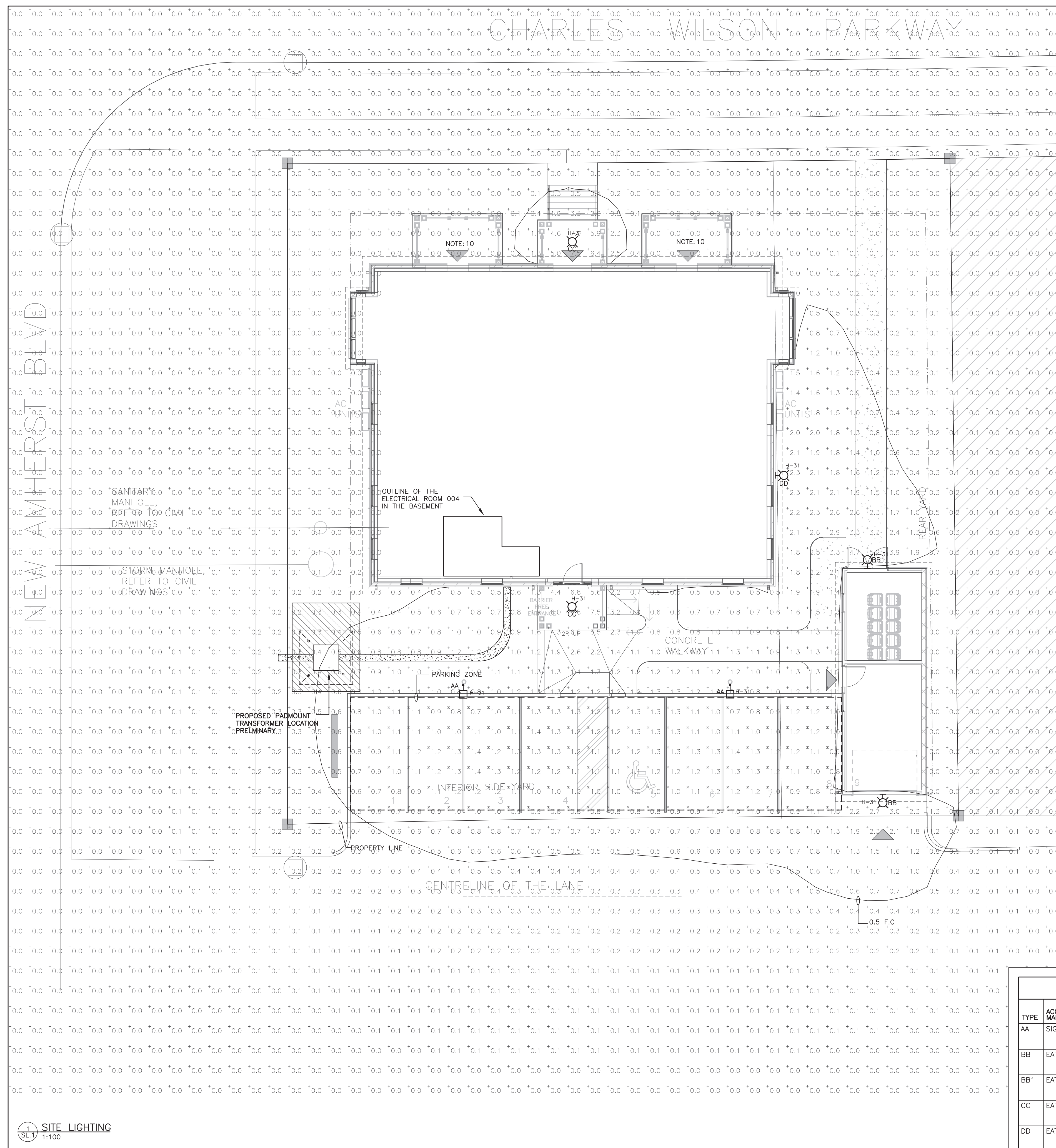
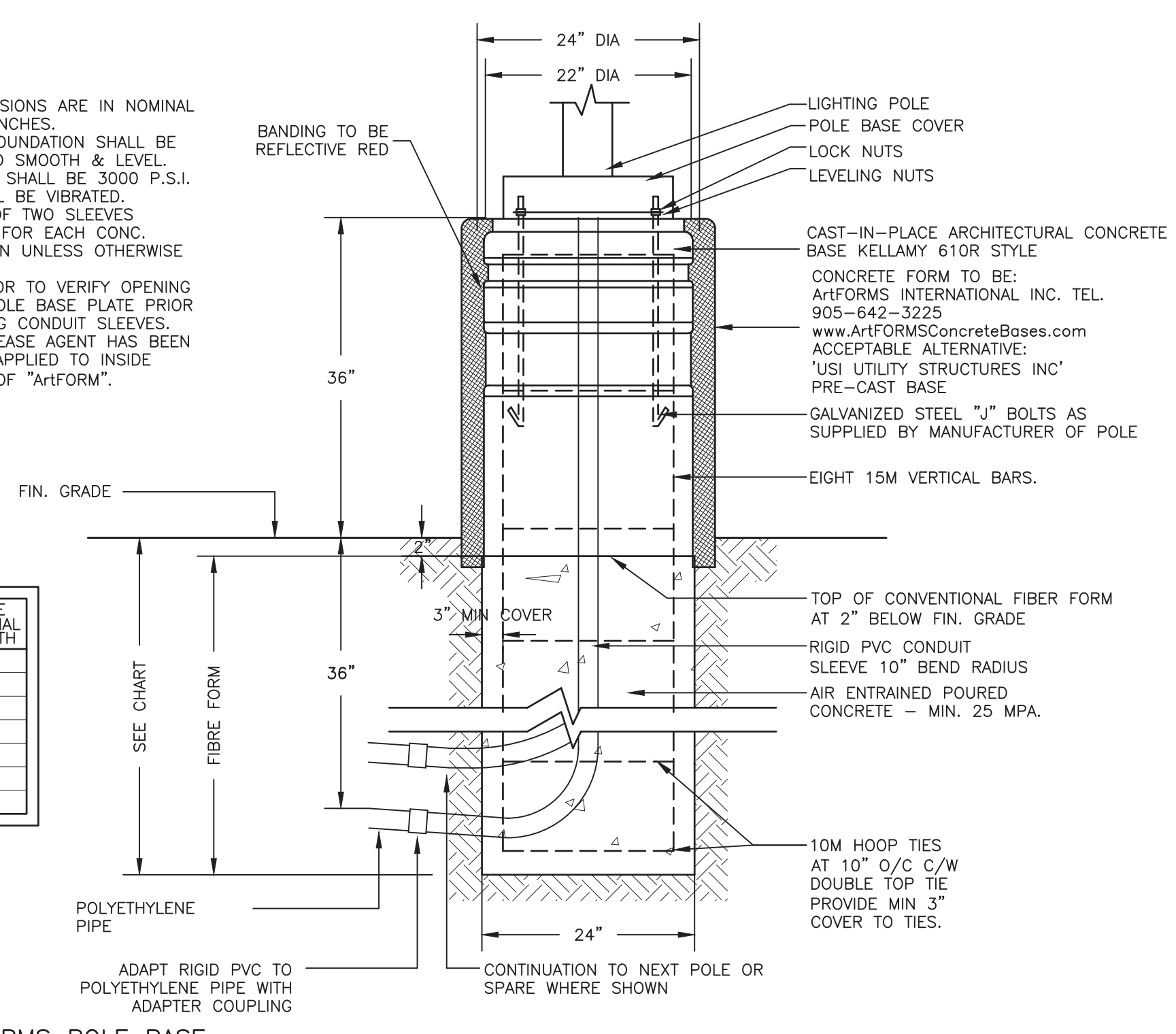


CHARLES WILSON PARKWAY

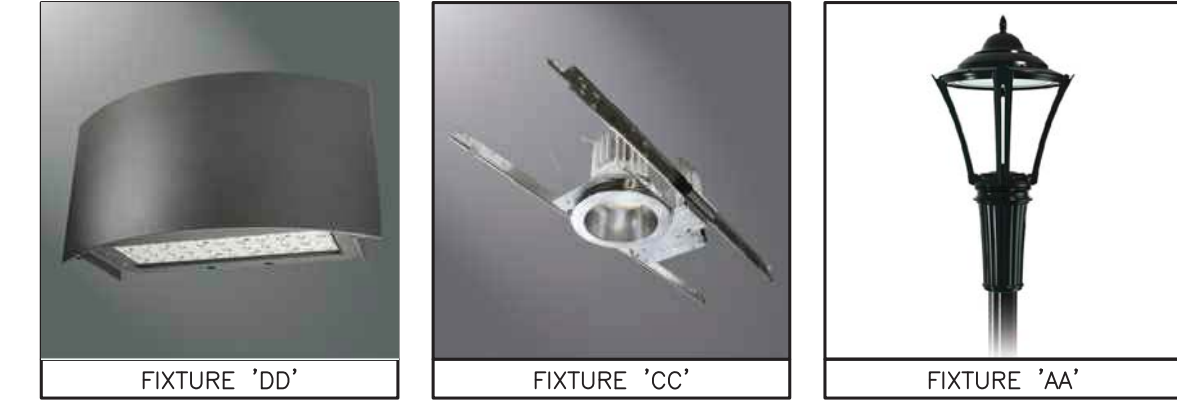


- NOTES:
1. ALL DIMENSIONS ARE IN NOMINAL FEET OR INCHES.
 2. TOP OF FOUNDATION SHALL BE TROWELED SMOOTH & LEVEL.
 3. CONCRETE SHALL BE 3000 P.S.I. AND SHALL BE VIBRATED.
 4. MINIMUM OF TWO SLEEVES REQUIRED FOR EACH CONC. FOUNDATION UNLESS OTHERWISE SHOWN.
 5. CONTRACTOR TO VERIFY OPENING SIZE IN POLE BASE PLATE PRIOR TO SETTING CONDUIT SLEEVES.
 6. FORM RELEASE AGENT HAS BEEN FACTORY-APPLIED TO INSIDE SURFACE OF "ArtFORM".

POLE LENGTH	BASE BURIAL DEPTH
10'	5'
19'	7'
29'	8'
35'	8.5'
40'	9'
45'	9.5'
50'	10'



2 ARTFORMS POLE BASE
SL.1 N.T.S.



MEASUREMENT PARKING ZONE	HORIZONTAL ILLUMINATION (FOOTCANDELS)
MINIMUM	0.6
AVERAGE	1.1
MAXIMUM	1.5
UNIFORMITY RATIO	
MAXIMUM-MINIMUM	2.1:1
AVERAGE-MINIMUM	1.8:1

SITE LIGHTING NOTES:

1. THIS DRAWING IS FOR FIXTURE LOCATIONS AND PHOTOMETRIC LAYOUT OF SITE LIGHTING ONLY. CONTACT ELECTRICAL CONSULTANT FOR BUILDING ELECTRICAL SITE PLAN TO CONFIRM LAYOUT OF CONDUIT ROUTING, CIRCUIT ARRANGEMENT, AND WIRE SIZING.
2. VOLTAGES OF FIXTURES ARE TO BE VERIFIED WITH THE ELECTRICAL SITE PLANS PRIOR TO ORDERING FIXTURES.
3. ELEVATIONS OF BASES ARE TO BE COORDINATED WITH SITE GRADING PLAN.
4. LIGHT STANDARDS ARE TO BE COORDINATED WITH WINDOW LOCATIONS. ANY FIXTURES WITHIN 10' (3m) OF THE BUILDING OR ANY CHANGES MADE TO THE BUILDING ENVELOPE ARE TO BE BROUGHT TO THE ATTENTION OF THE SITE LIGHTING CONSULTANT OR PROJECT MANAGER.
5. SUBSTITUTIONS OF LIGHT FIXTURES ARE NOT PERMITTED. IF THE CONTRACTOR SUBSTITUTES LIGHTING FIXTURES THE CONTRACTOR SHALL CARRY ALL COSTS TO HAVE PHOTOMETRIC CALCULATIONS DONE BY THE OFFICE OF THE SITE LIGHTING CONSULTANT AND ALL COSTS ASSOCIATED WITH SITE PLAN RE-SUBMISSION TO THE CITY.
6. PHOTOMETRICS SHOWN CONSIDER ALL FACTORS AFFECTING LIGHT OUTPUT LEVELS SUCH AS LAMP AND BALLAST DEPRECIATION AND DIRT ACCUMULATION OVER AN ESTIMATED ONE-YEAR PERIOD.
7. PHOTOMETRIC VALUES ARE SHOWN IN FOOTCANDELS(fc). A LIGHT LOSS FACTOR OF 0.9 WAS USED IN THE CALCULATION.
8. HOUSE SIDE SHIELDS ARE USED WHERE INDICATED IN LUMINAIRE SCHEDULE. NO ADDITIONAL SHIELDING IS PROVIDED.
9. ALL EXTERIOR LIGHTING POLES ARE TO BE GALVANIZED TO PREVENT CORROSION.
10. ALL BALCONY FIXTURES FOR RESIDENTIAL UNITS ARE TO BE DARK SKY COMPLIANT OR C/W FROSTED/OPAQUE LENS WITH A 5W LED.

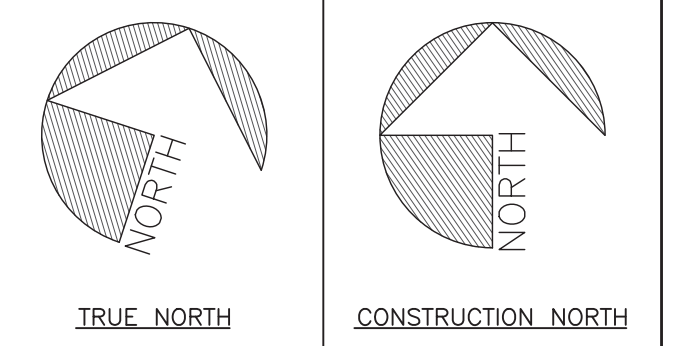
ELECTRICAL LEGEND

	LIGHT FIXTURE (z = TYPE AS PER SCHEDULE)
	POLE LIGHT FIXTURE (z = TYPE AS PER SCHEDULE)
	WALL MOUNTED LIGHT FIXTURE (z = TYPE AS PER SCHEDULE)

EXTERIOR LUMINAIRE SCHEDULE

TYPE	ACCEPTABLE MANUFACTURERS	MODELS	CATALOGUE NUMBERS	DESCRIPTION NUM. OF LAMPS	LOCATION MOUNTING HEIGHT	NOTES
AA	SIGNIFY	METROSCAPE	MPTRC.3000K.140L450NW.G1.4. UNV.DMG.PH8.BKTX.3000K.POLE:RA61 U 14 BKTx	AREA LUMINAIRE 86W, 1899LM, 120V	PARKING LOT POLE 15' AFG	PROVIDE 3.65m (12') ROUND STEEL POLE & 0.914m (3') CONCRETE POLE BASE. CONFIRM FINISH WITH OWNER PRIOR TO ORDERING.
BB	EATON	XTOR	XTOR1B.Y.BZ.PC1.	WALL PACK 12W 120V	BUILDING WALL 8' AFG	CONFIRM FINISH WITH OWNER PRIOR TO ORDERING.
BB1	EATON	XTOR	XTOR1B.Y.BZ.PC1.	WALL PACK 12W 120V	BUILDING WALL 7.5' AFG	CONFIRM FINISH WITH OWNER PRIOR TO ORDERING.
CC	EATON	HALO	HC4.10.D010.HM4.12.830.41.MD.W.WF.	4" POT LIGHT LED 24.7W 120V	CANOPY RECESSED	CONFIRM FINISH WITH OWNER PRIOR TO ORDERING.
DD	EATON	ENC	ENC.E01.LED.E1.BL2.BZ.B030 OSE.LXX	AREA LUMINAIRE 24.7W 120V	BUILDING WALL 9.8' AFG	CONFIRM FINISH WITH OWNER PRIOR TO ORDERING. COORDINATE HEIGHT ON SITE TO BE BELOW WINDOWS.

1 SITE LIGHTING
SL.1 1:100



No	REVISION	DATE
5		
4		
3	RE-ISSUED FOR SPA	2020.04.17
2	RE-ISSUED FOR SPA	2020.01.20
1	ISSUED FOR SPA	2019.11.28



300 VICTORIA ST. N. 2ND FL. KITCHENER, ON N2H 6B9
PH (519) 745-3703
FAX (519) 745-5081
WEB www.mighton.com

PROJECT TITLE:
NEW AMHERST 6 PLEX - BLOCK 123

DRAWING TITLE:
SITE LIGHTING

DRAWN BY: T.R	CUSTOMER PROJECT No. ---
CHECKED BY: T.A	MIGHTON PROJECT No. 40012
DATE: NOV, 2019	DRAWING No. ---
SCALE: 1:100	SL.1