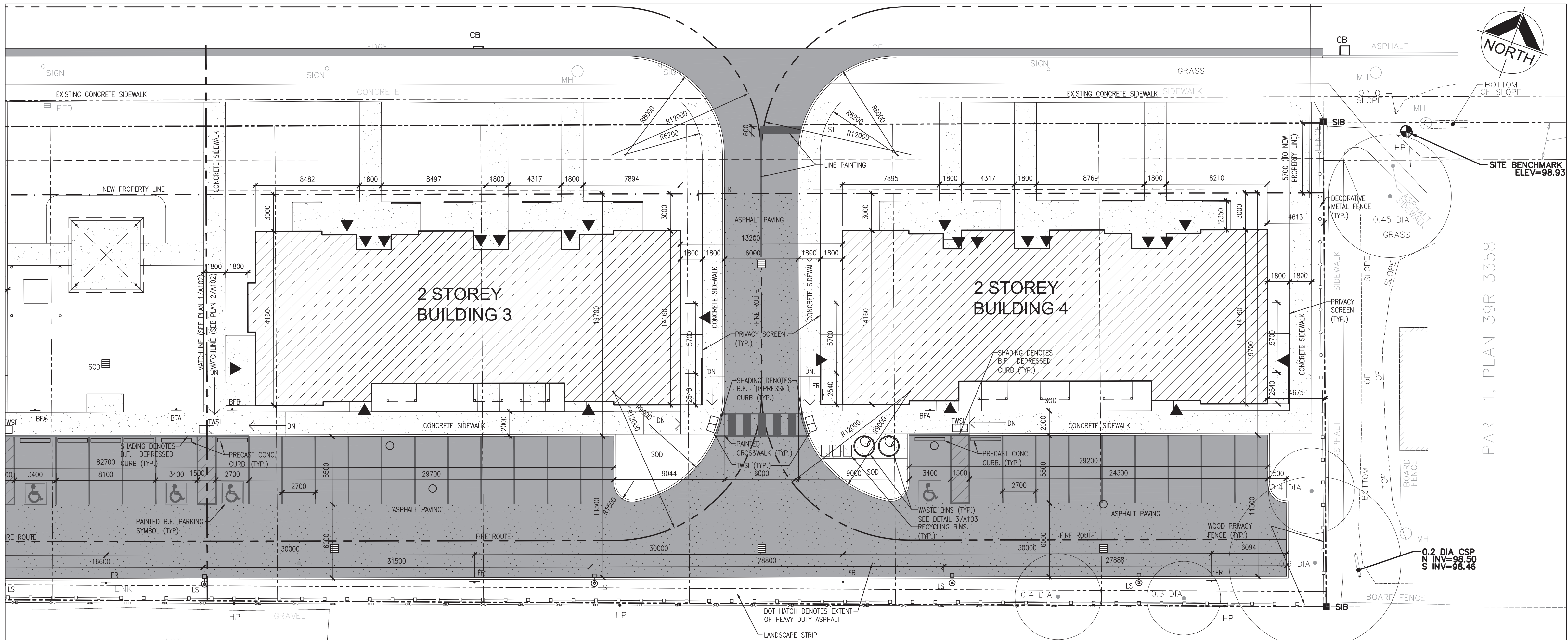


1 SITE PLAN - PART A
1:200



2 SITE PLAN - PART B
1:200

SITE LEGEND

1 DETAIL NUMBER
A200

ABBREVIATIONS

LS LIGHT STANDARD
MH MAN HOLE
CB CATCH BASIN
BFA BARRIER FREE PARKING SIGN A
BFB BARRIER FREE PARKING SIGN B
ST STOP SIGN
FR FIRE ROUTE SIGN
TWSI CAST-IN TACTILE WARNING SURFACE INDICATOR
HP HYDRO POLE
WK WATER KEY
WV WATER VALVE
GV GAS VALVE
FH FIRE HYDRANT
PED TELEPHONE PEDESTAL

NOTES

1. ARCHITECTURAL SITE PLAN TO BE READ IN CONJUNCTION WITH MECHANICAL, ELECTRICAL, CIVIL, SURVEY AND LANDSCAPE PLANS.

DO NOT SCALE THE DRAWINGS.

CHECK AND VERIFY ALL DIMENSIONS AT THE SITE.

ALL DRAWINGS, SPECIFICATIONS AND RELATED DOCUMENTS ARE THE COPYRIGHT PROPERTY OF THE CONSULTANT AND MUST BE RETURNED UPON REQUEST. REPRODUCTION OF DRAWINGS IN PART OR WHOLE WITHOUT THE PERMISSION OF THE CONSULTANT IS FORBIDDEN.

DRAWINGS ARE NOT TO BE USED FOR CONSTRUCTION UNTIL SIGNED AND SEALED BY THE CONSULTANT.

NO.	ISSUES	DATE	BY
1	ISSUED FOR SITE PLAN APPROVAL	DEC. 7, 2020	BBA
2	REISSUED FOR SITE PLAN APPROVAL	APR. 7, 2021	BBA

NO.	REVISIONS	DATE	BY
-----	-----------	------	----

PROJECT:

**ELGIN PARK
REDEVELOPMENT
PROJECT**

265-327 ELGIN STREET
COBOURG, ON

NORTHUMBERLAND COUNTY

DRAWING:

**SITE PLAN
PARTS A & B**



**BARRY BRYAN
ASSOCIATES**

Architects
Engineers
Project Managers

250 Water Street
Suite 201
Whitby, Ontario
L1N 0G5

Tel: (905) 666-5252
Fax: (905) 666-5256
e-mail: bba@bba-archeng.com



DESIGN BY:
BBA

DRAWN BY:
CM

CHECKED BY:

DATE:
NOV. 2020

SCALE:
1:200

FILE:

PROJECT NO:

19284

DRAWING NO:

A102