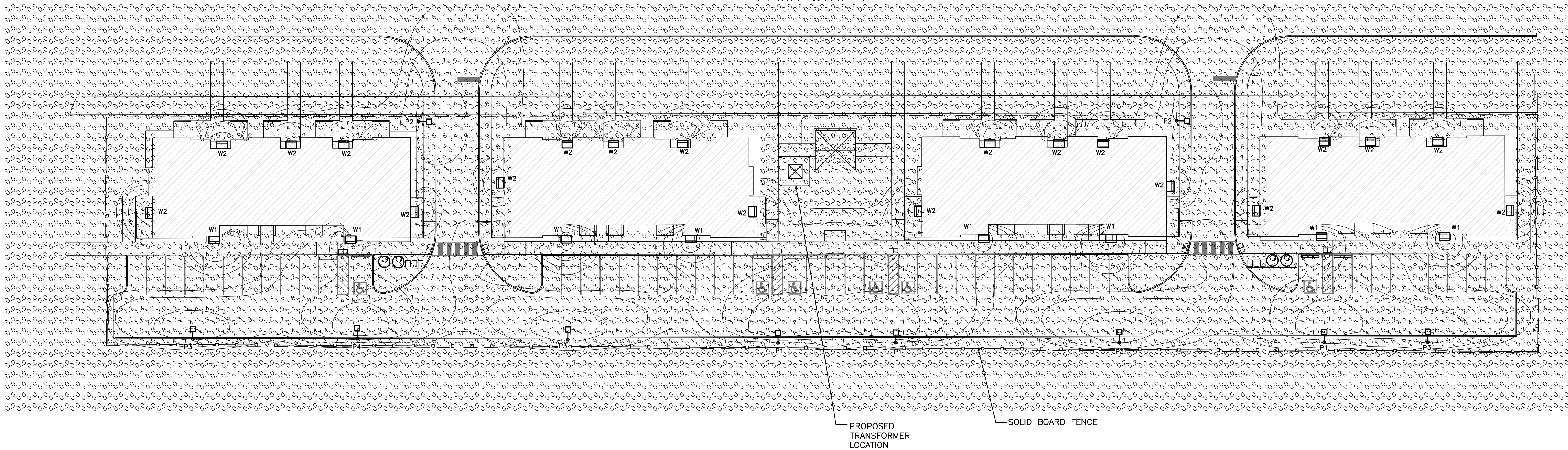


ELGIN STREET



SITE LIGHTING FIXTURE SCHEDULE:

TYPE W1 WALL LIGHT

1. LAMP TYPE: LITHONIA LED ARCHITECTURAL WALL SCONCE, 4W
2. MODEL: LITHONIA WDGE1 #WDGE1 LED P2 40K 80CRI VF MVOLT SRM DDBXD
3. LUMINAIRE MOUNTING HEIGHT TO BE 2.6m ABOVE GRADE OR AS DIRECTED BY ARCHITECT. COORDINATE AND CONFIRM ALL LIGHTING LOCATIONS WITH ARCHITECT AND ENGINEER PRIOR TO COMMENCEMENT OF WORK.

TYPE W2 WALL LIGHT

1. LAMP TYPE: LITHONIA LED ARCHITECTURAL WALL SCONCE, 4W
2. MODEL: LITHONIA WDGE1 #WDGE1 LED P2 40K 80CRI VF MVOLT SRM DDBXD
3. LUMINAIRE MOUNTING HEIGHT TO BE 2.6m ABOVE GRADE OR AS DIRECTED BY ARCHITECT. COORDINATE AND CONFIRM ALL LIGHTING LOCATIONS WITH ARCHITECT AND ENGINEER PRIOR TO COMMENCEMENT OF WORK.

TYPE P1 POLE MOUNTED LIGHT

1. LAMP TYPE: ECOFORM SMALL AREA LED POLE MOUNTED LIGHT, 160W
2. MODEL: GARDO ECOFORM #ECF-S-48L-1A-NW-G2-AR-4-120-HIS-BZ
3. LUMINAIRE MOUNTING HEIGHT TO BE 4.57m ABOVE GRADE. REFER TO LIGHT POLE BASE DETAIL.
5. ARM LENGTH FOR MOUNTING TO BE 0.47m FROM LIGHT POLE.

TYPE P2 POLE MOUNTED LIGHT

1. LAMP TYPE: ECOFORM SMALL AREA LED POLE MOUNTED LIGHT, 106W
2. MODEL: GARDO ECOFORM #ECF-S-32L-1A-NW-G2-AR-3-120-HIS-BZ
3. LUMINAIRE MOUNTING HEIGHT TO BE 4.57m ABOVE GRADE. REFER TO LIGHT POLE BASE DETAIL.
5. ARM LENGTH FOR MOUNTING TO BE 0.47m FROM LIGHT POLE.

TYPE P3 POLE MOUNTED LIGHT

1. LAMP TYPE: ECOFORM SMALL AREA LED POLE MOUNTED LIGHT, 106W
2. MODEL: GARDO ECOFORM #ECF-S-32L-1A-NW-G2-AR-3-120-HIS-BZ
3. LUMINAIRE MOUNTING HEIGHT TO BE 4.57m ABOVE GRADE. REFER TO LIGHT POLE BASE DETAIL.
5. ARM LENGTH FOR MOUNTING TO BE 0.47m FROM LIGHT POLE.

TYPE P4 POLE MOUNTED LIGHT

1. LAMP TYPE: ECOFORM SMALL AREA LED POLE MOUNTED LIGHT, 135W
2. MODEL: GARDO ECOFORM #ECF-S-48L-900mA-NW-G2-AR-4-120-HIS-BZ
3. LUMINAIRE MOUNTING HEIGHT TO BE 4.57m ABOVE GRADE. REFER TO LIGHT POLE BASE DETAIL.
5. ARM LENGTH FOR MOUNTING TO BE 0.47m FROM LIGHT POLE.

LEGEND	
	WALL LIGHTS
	PHOTOMETRIC VALUES (SHOWN IN FOOT CANDLES)
	ISOMETRIC LIGHT CURVES
	POLE LIGHTS

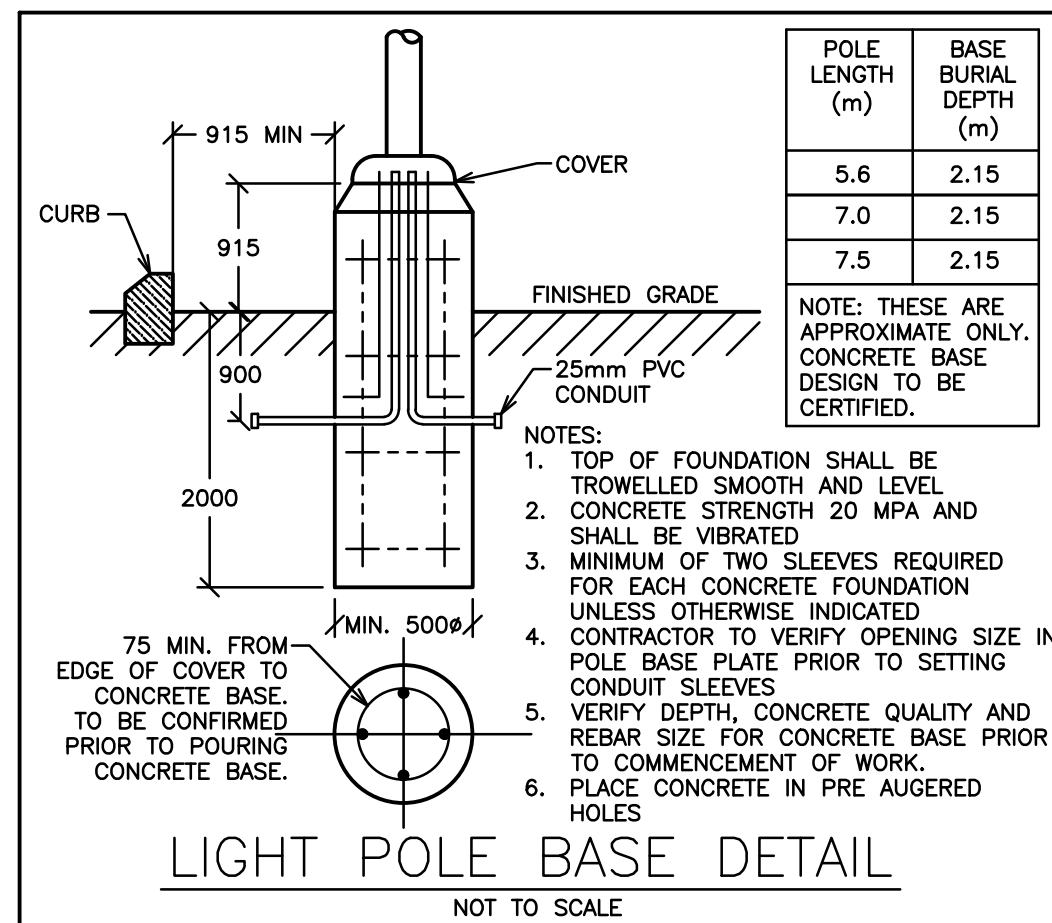
NOTE: CONTRACTOR TO REVIEW LIGHT FIXTURE SHOP DRAWINGS WITH CLIENT AND ENGINEER PRIOR TO COMMENCEMENT OF WORK FOR FINAL APPROVAL.

NOTE: FINAL LOCATIONS OF WALL MOUNTED LIGHTING TO BE APPROVED BY ARCHITECT AND OWNER PRIOR TO COMMENCEMENT OF WORK. TYPICAL.

NOTE: PHOTOMETRIC VALUES ARE SHOWN IN FOOT CANDLES WITH ISOMETRIC LIGHT CURVES

CONTRACTOR TO BE RESPONSIBLE FOR LOCATION OF ALL EXISTING UNDERGROUND & OVERHEAD UTILITIES. VARIOUS UTILITIES CONCERNED TO BE GIVEN REQUIRED ADVANCE NOTICE PRIOR TO ANY DIGGING, FOR STAKE OUT. THE CONSULTANT ASSUMES NO RESPONSIBILITY FOR THE ACCURACY OF THE LOCATION OF EXISTING UTILITIES AS INDICATED ON THIS DRAWING.

THIS DRAWING INDICATES ALL PROPOSED OUTDOOR LIGHTING FIXTURES FOR THIS PROPOSED DEVELOPMENT. THE LIGHTING DESIGN IS IN ACCORDANCE WITH THE APPLICABLE LIGHTING ZONE AS ESTABLISHED BY THE PLANNING DEPARTMENT, AND DESIGNED WITH AN AVERAGE TO MINIMUM RATIO IN ACCORDANCE WITH THE ILLUMINATING ENGINEERING SOCIETY GUIDELINES. THIS LIGHTING DESIGN WILL NOT CREATE ANY OBJECTIONABLE GLARE FOR ADJACENT PROPERTIES.



POLE LENGTH (m)	BASE BURIAL DEPTH (m)
5.6	2.15
7.0	2.15
7.5	2.15

NOTE: THESE ARE APPROXIMATE ONLY. CONCRETE BASE DESIGN TO BE CERTIFIED.

- NOTES:
- TOP OF FOUNDATION SHALL BE TROWELLED SMOOTH AND LEVEL
 - CONCRETE STRENGTH 20 MPA AND SHALL BE VIBRATED
 - MINIMUM OF TWO SLEEVES REQUIRED FOR EACH CONCRETE FOUNDATION UNLESS OTHERWISE INDICATED
 - CONTRACTOR TO VERIFY OPENING SIZE IN POLE BASE PLATE PRIOR TO SETTING CONDUIT SLEEVES
 - VERIFY DEPTH, CONCRETE QUALITY AND REBAR SIZE FOR CONCRETE BASE PRIOR TO COMMENCEMENT OF WORK.
 - PLACE CONCRETE IN PRE AUGERED HOLES



GARDO - ECOFORM



LITHONIA - WDGE1

NOT FOR CONSTRUCTION

SITE LIGHTING NOTES:

- ALL NEW OUTSIDE LIGHTS TO BE CONTROLLED BY BUILDING PHOTOCELL AND TIME SWITCH. COORDINATE CONTROLS AND POWER REQUIREMENTS WITH BUILDING DISTRIBUTION DRAWINGS.
- ALL PHOTOMETRIC VALUES ARE SHOWN IN FOOT CANDLES.
- ALL FIXTURES TO BE DOWNLIGHTING, FULL CUT-OFF ONLY.

NUMERIC SUMMARY

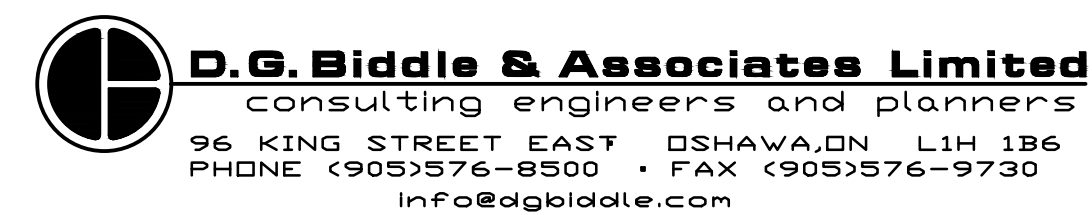
	AVERAGE	MINIMUM	MAXIMUM	AVG/MIN	MAX/MIN
SITE	0.91	0.00	9.90	N/A	N/A
ACCESSIBLE PARKING	3.25	1.20	5.30	2.71	4.42
PARKING	2.53	0.10	9.90	25.30	99.00

NO.	DATE	REVISION	BY
6.	04/05/2021	ISSUED FOR SPA	S.D.
5.	03/22/2021	SITE PLAN UPDATE	S.D.
4.	12/08/2020	SITE PLAN UPDATE	S.D.
3.	12/01/2020	SITE PLAN UPDATE	S.D.
2.	11/27/2020	SITE PLAN UPDATE	S.D.
1.	11/04/2020	ISSUED FOR COORDINATION	S.D.

NO.	DATE	REVISION	BY
-----	------	----------	----

265 - 327 ELGIN STREET, COBOURG, ON

SITE LIGHTING
PHOTOMETRICS



SCALE:	1:400	PROJECT NO.	119088
DRAWN BY:	S.D.	DRAWING NO.	SL-1
DESIGN BY:	S.D.		
CHECKED BY:	G.V.W.O		
DATE:	APRIL 2021		

