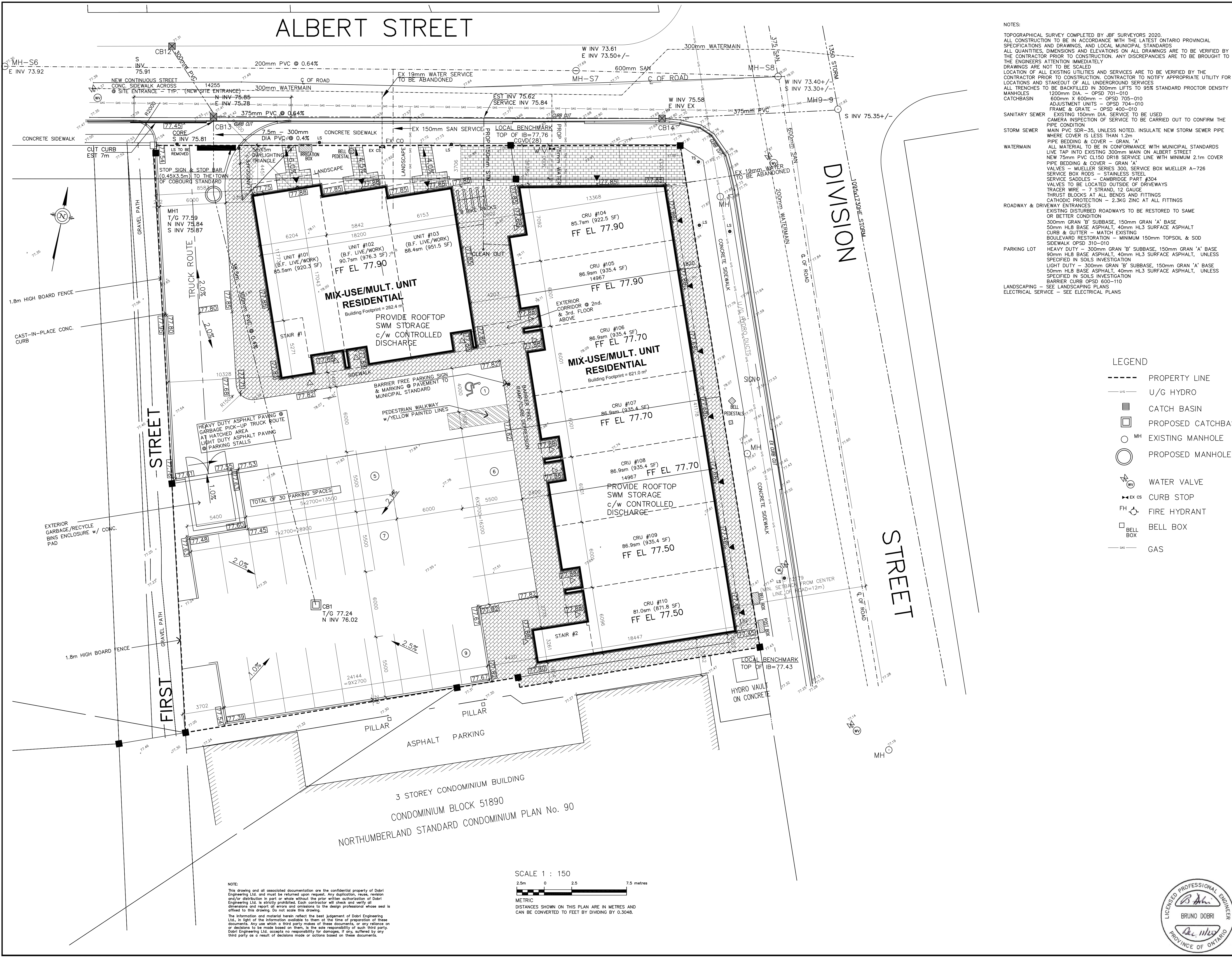


ALBERT STREET



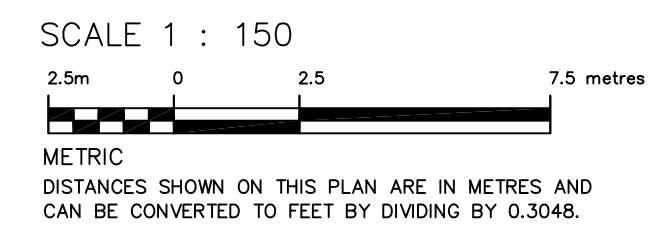
NOTES:

TOPOGRAPHICAL SURVEY COMPLETED BY JBF SURVEYORS 2020.
 ALL CONSTRUCTION TO BE IN ACCORDANCE WITH THE LATEST ONTARIO PROVINCIAL SPECIFICATIONS AND DRAWINGS, AND LOCAL MUNICIPAL STANDARDS.
 ALL QUANTITIES, DIMENSIONS AND ELEVATIONS ON ALL DRAWINGS ARE TO BE VERIFIED BY THE CONTRACTOR PRIOR TO CONSTRUCTION. ANY DISCREPANCIES ARE TO BE BROUGHT TO THE ENGINEER'S ATTENTION IMMEDIATELY.
 DRAWINGS ARE NOT TO BE SCALED.
 LOCATION OF ALL EXISTING UTILITIES AND SERVICES ARE TO BE VERIFIED BY THE CONTRACTOR PRIOR TO CONSTRUCTION. CONTRACTOR TO NOTIFY APPROPRIATE UTILITY FOR LOCATIONS AND STAKEOUT OF ALL UNDERGROUND SERVICES.
 ALL TRENCHES TO BE BACKFILLED IN 300mm LIFTS TO 95% STANDARD PROCTOR DENSITY.
CATCHBASIN
 1200mm DIA. - OPSD 701-010
 600mm X 600mm - OPSD 705-010
 ADJUSTMENT UNITS - OPSD 704-010
 FRAME & GRATE - OPSD 400-010
SANITARY SEWER
 EXISTING 150mm DIA. SERVICE TO BE USED
 CAMERA INSPECTION OF SERVICE TO BE CARRIED OUT TO CONFIRM THE PIPE CONDITION
STORM SEWER
 MAIN PVC SDR-35, UNLESS NOTED. INSULATE NEW STORM SEWER PIPE WHERE COVER IS LESS THAN 1.2m.
PIPE BEDDING & COVER - GRAN. 'A'
 ALL MATERIAL TO BE IN CONFORMANCE WITH MUNICIPAL STANDARDS
WATERMAIN
 LIVE TAP INTO EXISTING 300mm MAIN ON ALBERT STREET
 NEW 75mm PVC CL150 DR18 SERVICE LINE WITH MINIMUM 2.1m COVER
 PIPE BEDDING & COVER - GRAN. 'A'
 VALVES - MUELLER SERIES 300, SERVICE BOX MUELLER A-726
 SERVICE BOX RODS - STAINLESS STEEL
 SERVICE SADDLES - CAMBRIDGE PART #304
 VALVES TO BE LOCATED OUTSIDE OF DRIVEWAYS
 TRACER WIRE - 7 STRAND, 12 GAUGE
 THRUST BLOCKS AT ALL BENDS AND FITTINGS
 CATHODIC PROTECTION - 2.3KG ZINC AT ALL FITTINGS
ROADWAY & DRIVEWAY ENTRANCES
 EXISTING DISTURBED ROADWAYS TO BE RESTORED TO SAME OR BETTER CONDITION
 300mm GRAN 'B' SUBBASE, 150mm GRAN 'A' BASE
 50mm HLB BASE ASPHALT, 40mm HL3 SURFACE ASPHALT
 CURB & GUTTER - MATCH EXISTING
BOULEVARD RESTORATION - MINIMUM 150mm TOPSOIL & SOD
PARKING LOT
 HEAVY DUTY - 300mm GRAN 'B' SUBBASE, 150mm GRAN 'A' BASE
 90mm HLB BASE ASPHALT, 40mm HL3 SURFACE ASPHALT, UNLESS SPECIFIED IN SOILS INVESTIGATION
 LIGHT DUTY - 300mm GRAN 'B' SUBBASE, 150mm GRAN 'A' BASE
 50mm HLB BASE ASPHALT, 40mm HL3 SURFACE ASPHALT, UNLESS SPECIFIED IN SOILS INVESTIGATION
LANDSCAPING - SEE LANDSCAPING PLANS
ELECTRICAL SERVICE - SEE ELECTRICAL PLANS

LEGEND

- PROPERTY LINE
- U/G HYDRO
- CATCH BASIN
- PROPOSED CATCHBASIN
- EXISTING MANHOLE
- PROPOSED MANHOLE
- ⊙ WATER VALVE
- ⊙ EX CS CURB STOP
- ⊙ FIRE HYDRANT
- BELL BOX
- GAS
- WATER SERVICE/MAIN
- SANITARY SERVICE/MAIN
- STORM SEWER
- EXISTING GRADE
- PROPOSED GRADE
- SWALE GRADE
- SURFACE DRAINAGE
- PERMEABLE PAVERS

NOTE:
 This drawing and all associated documentation are the confidential property of Dobri Engineering Ltd. and must be returned upon request. Any duplication, reuse, resale and/or distribution in part or whole without the prior written authorization of Dobri Engineering Ltd. is strictly prohibited. Each contractor will check and verify all dimensions and report of errors and omissions to the design professional whose seal is affixed to this drawing. Do not scale this drawing.
 The information and material herein reflect the best judgement of Dobri Engineering Ltd. in light of the information available to them at the time of preparation of these documents. Any use which a third party makes of these documents, or any reliance on or decisions to be made based on them, is the sole responsibility of such third party. Dobri Engineering Ltd. accepts no responsibility for damages, if any, suffered by any third party as a result of decisions made or actions based on these documents.



2		
1		
REV	COMMENT	DATE

DOBRI ENGINEERING LTD.
 205 PETER ST. P.O. BOX 441,
 PORT HOPE, ONTARIO L1A 3Z3
 TEL. 905-885-2881 email - dobrieng@bellnet.ca

MIXED USE/MULTI-USE RESIDENTIAL GRADING & SERVING PLAN
 185 DIVISION STREET
 TOWN OF COBOURG

SCALE: 1:150 DATE: DEC. 11/20 BY: BD
 DWG. NO.: 20-645-001

