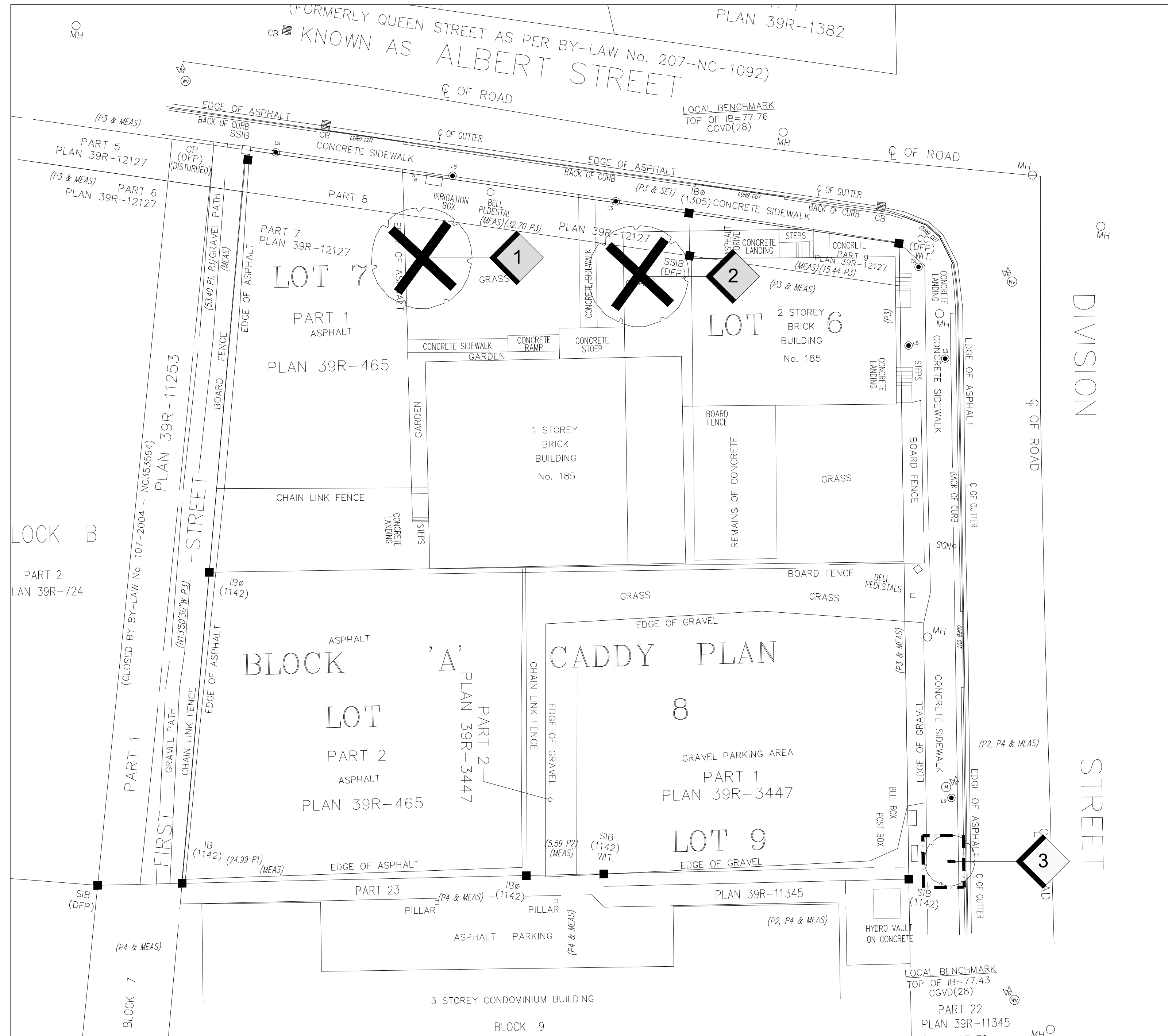
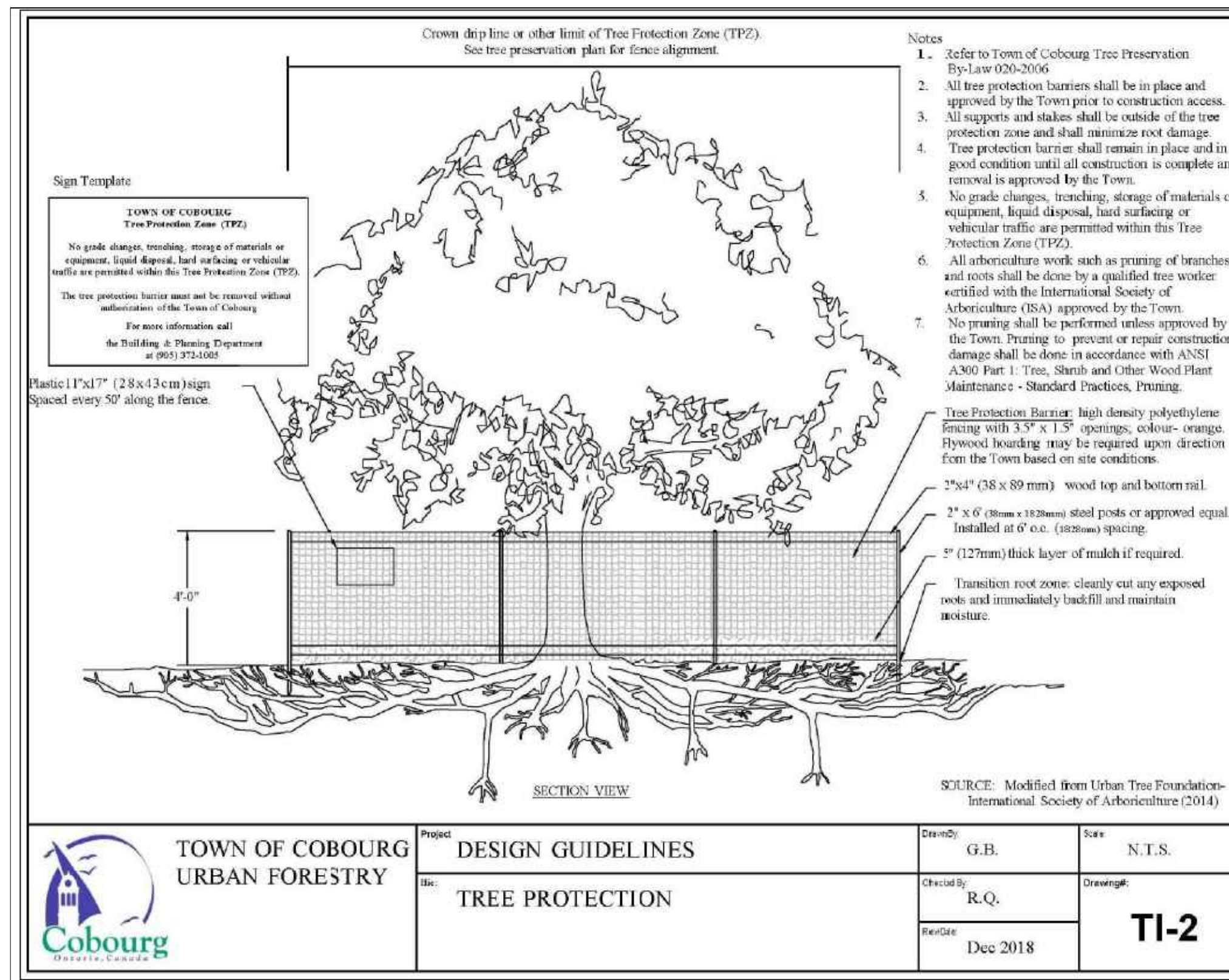


**TREE INVENTORY NOTES**

Tree #	Common Name	Botanical Name	DBH (CM)	Condition	Comments	Recommendation
1	Norway Maple	Acer platanoides	54	F/G	Poor form with co-dominant stems and obvious bark inclusions. Shallow roots with minor girdling.	Remove due construction
2	Norway Maple	Acer platanoides	52	F	Obvious split in trunk which is compartmentalizing some obvious rot, shallow roots with minor girdling.	Remove due construction
3	Honey Locust	Gleditsia triacanthos	18	F/G	Tree is surrounded by hard surface (concrete and unit pavers).	Retain



**1** TREE INVENTORY, REMOVALS, AND PROTECTION PLAN  
SCALE: 1:200



**2** TREE PROTECTION FENCING  
TI-1

**LEGEND**

- EXISTING DECIDUOUS TREE TO REMAIN
- EXISTING CONIFEROUS TREE TO REMAIN
- EXISTING TREE TO REMOVE (DECIDUOUS / CONIFEROUS)
- TREE IDENTIFICATION KEY (TREES TO BE RETAINED)
- TREE IDENTIFICATION KEY (TREES TO BE REMOVED)
- TREE PROTECTION FENCING PER TOWN OF COBOURG STANDARDS

- GENERAL NOTES**
- Do not scale the drawings. All dimensions are in millimetres unless noted otherwise.
  - This drawing is to be read in conjunction with the project site plan, landscape plan, and engineering plan.
  - The tree inventory includes assessment of trees >10cm DBH. The trees have been assessed based on species, size and condition.
  - The contractor shall check and verify all existing and proposed grading and conditions on the project and immediately report any discrepancies to the consultant before proceeding with any removals.
  - The contractor is to be aware of all existing and proposed services and utilities. The contractor is responsible for having all underground services and utility lines staked by each agency having jurisdiction prior to commencing work.
  - This drawing is to be used for development approval only.
  - Do not leave any holes open overnight.
  - Keep area outside construction zone clean and useable by others at all times. Contractor shall thoroughly clean areas surrounding the construction zone at the end of each work day.
  - Contractor to make good any and all damages outside of the development area that may occur as a result of tree removals at no extra cost.
  - This drawing is Copyright MHBC Planning, 2020.

1.	DECEMBER 21, 2020	ISSUED FOR SPA	CC
REVISION NO.	DATE	ISSUED / REVISION	BY

**MHBC** PLANNING URBAN DESIGN & LANDSCAPE ARCHITECTURE  
230-7050 WESTON ROAD WOODBRIDGE, ON, L4L 6G7 | P: 905.761.5588 F: 905.761.5589 | WWW.MHBCPLAN.COM

**STAMP**

ISSUED FOR SPA ONLY  
NOT FOR CONSTRUCTION

All drawings and specifications are instruments of service and will remain the property of MHBC Planning and must be returned at the completion of the work. This drawing shall not be used for construction purposes unless the drawings are marked 'Issued for Construction' and the professional seal is signed and dated by the landscape architect.

<b>PROJECT</b>	MIX-USE / MULTI-USE RESIDENTIAL ALBERT STREET AND DIVISION STREET COBOURG, ONTARIO	
<b>DATE</b>	DECEMBER 2020	
<b>DRAWN BY</b>	CC	
<b>PLAN SCALE</b>	1:200	
<b>FILE NO.</b>	20289A	
<b>CHECKED BY</b>	N.M.	
<b>OTHER</b>		
<b>FILE NAME</b>	TREE INVENTORY, PROTECTION, AND REMOVALS	<b>DWG NO.</b> TI-1