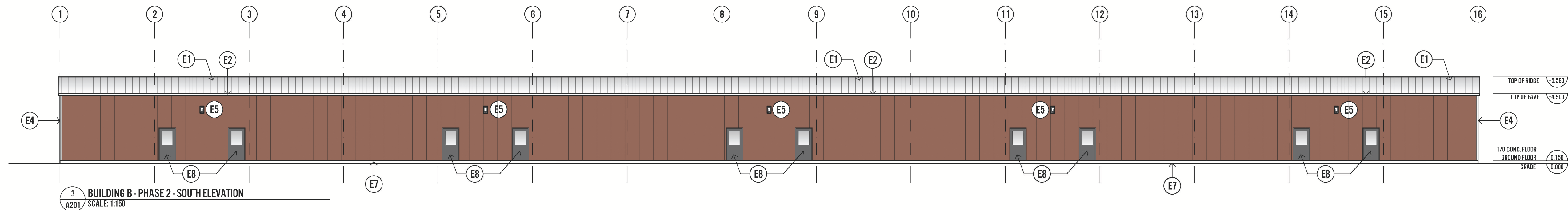
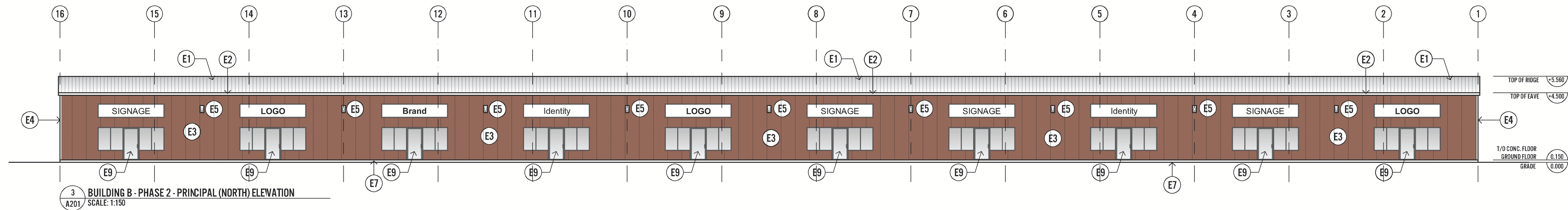
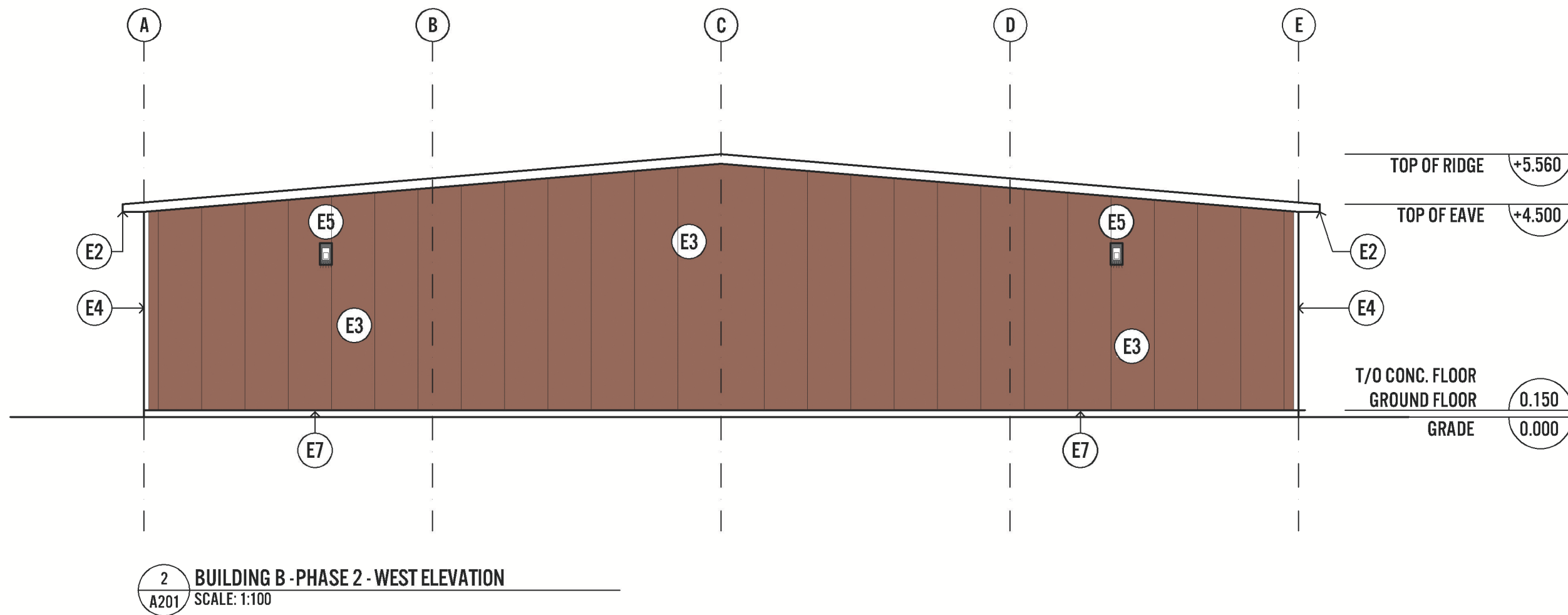
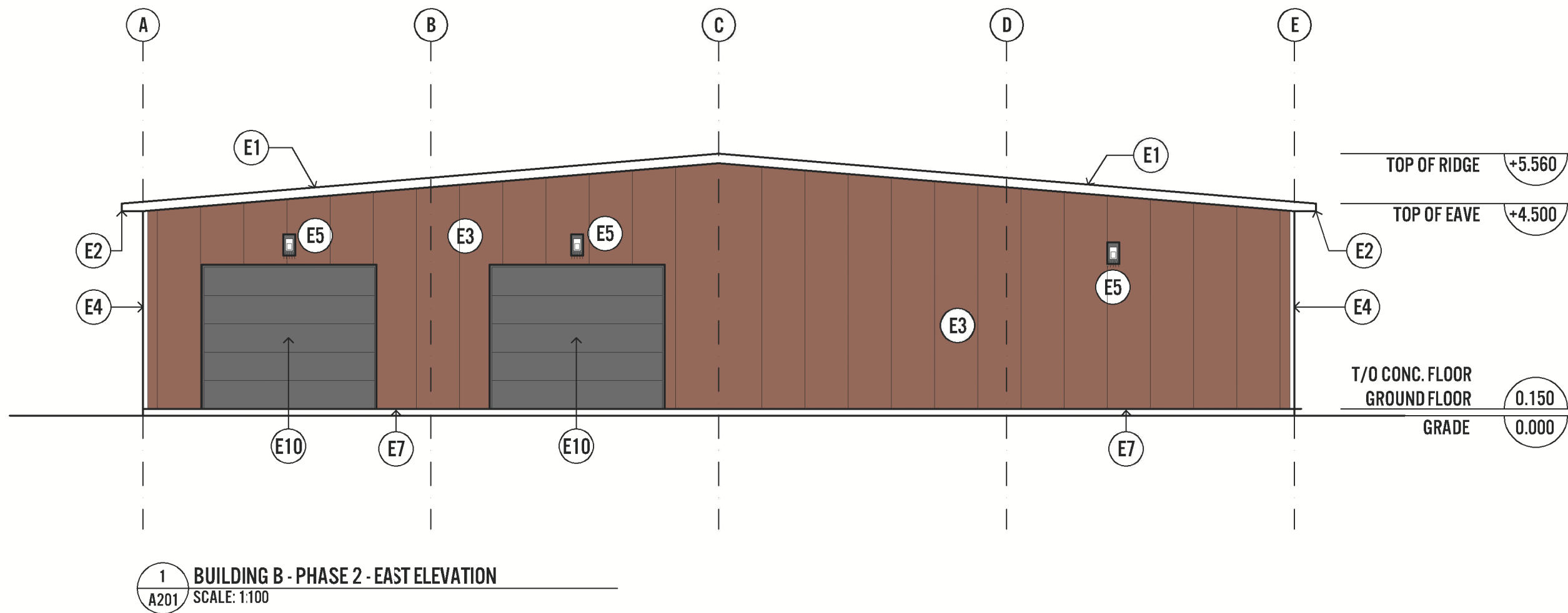


ELEVATION FINISH SCHEDULE

|    |   |     |   |
|----|---|-----|---|
| E1 | STANDING SEAM PREFINISHED METAL ROOF "GALVALUME"              | E6  | FOUNDATION BEYOND                         |
| E2 | ALUMINUM EAVESTROUGH  | E7  | 6" MINIMUM CONCRETE CLEAR                 |
| E3 | PREFINISHED METAL-CLAD INSULATED PANEL, NORSTEEL, "BRICK RED" | E8  | INSULATED METAL & GLASS DOOR              |
| E4 | PREFINISHED METAL CORNER TRIM, NORSTEEL, "POLAR WHITE"        | E9  | DOUBLE-GLAZED GLASS COMMERCIAL ENTRY DOOR |
| E5 | WALL-MOUNTED LED LIGHT PACK                                   | E10 | INSULATED OH DOOR                         |
|    |   | E11 | GLAZED COMMERCIAL OH DOOR                 |



All plans, sketches, drawings, graphic representations and specifications prepared by ANDREW SMITH BUILDING DESIGN INC are instruments of service for carrying out a project. ANDREW SMITH BUILDING DESIGN INC retains copyright in these plans, sketches, drawings, graphic representations and specifications, which may not be used for any other project without the written consent of ANDREW SMITH BUILDING DESIGN INC and the Owners.

Do not scale drawings.

Examine the drawings carefully before commencing the Work. Report discrepancies, if any, to the Designer and obtain clarification of additional instructions before proceeding with that part of the Work.

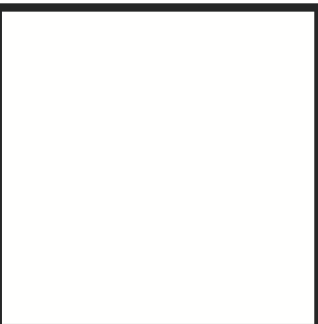
Do not commence the Work unless the drawing is issued for Construction.

NOTE: These drawings are not to be used for building permit application or construction unless countersigned by the Designer with BCIN numbers affixed.

GENERAL CONTRACTOR

ARCHITECTURAL CONSULTANT

Pavlo Tourko  
VArchitect  
22 Juttand Road, Unit C  
Toronto, ON M8Z 2G9



This drawing shall not be used for construction purposes unless countersigned by the Architect.

| ISSUE SCHEDULE |           |  |     |  |
|----------------|-----------|--|-----|--|
| NO.            | DATE      | ISSUED   | BY  |  |
| 6              | 8.24.2021 | Issued for Site Plan Approval - First Submission | AKS |  |
| 5              | 8.16.2021 | Issued for Client Review                         | AKS |  |
| 4              | 7.23.2021 | Issued for Coordination                          | AKS |  |
| 3              | 5.19.2021 | Issued for Planning Pre-Consultation             | AKS |  |
| 2              | 5.14.2021 | Issued for Client Review                         | AKS |  |
| 1              | 5.12.2021 | Issued for Preliminary Review                    | AKS |  |

andrewsmith  
buildingdesign inc

T 289.252.2332 www.aksmitdesign.com  
200A division street, cobourg, on k9a 3p7

PROJECT



Bottling/Distribution Facility  
156 Wilmott Street, Cobourg, ON

DRAWING  
Building B  
Phase 2 - Exterior Elevations

|        |            |
|--------|------------|
| DESIGN | AKS        |
| DRAWN  | AKS        |
| DATE   | April 2021 |
| SCALE  | AS SHOWN   |

|             |          |
|-------------|----------|
| PROJECT No. | 2021-091 |
| SHEET No.   | A201     |