

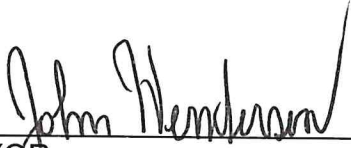
A BY-LAW TO AUTHORIZE EXECUTION OF A PRE-SERVICING AND A SUBDIVISION AGREEMENT WITH KWENDILL HOLDINGS LTD., AND THE CORPORATION OF THE TOWN OF COBOURG.

WHEREAS pursuant to Section 51(26) of the *Planning Act*, R. S. O. 1990, c. P. 13, as amended, which provides that a municipality has the authority to enter into one or more agreements as a condition of the approval of a plan of subdivision;

NOW THEREFORE the Municipal Council of the Corporation of the Town of Cobourg enacts as follows:

1. That the Mayor and Municipal Clerk are hereby authorized and instructed to execute on behalf of the Corporation a Pre-Servicing Agreement and a Subdivision Agreement with Kwendill Holdings Ltd., for an Industrial Development consisting 6 Lots with Blocks for stormwater and access purposes on the south side of Kerr Street between Division and D'Arcy Streets, subject to the finalization of details by municipal staff and applicable agencies.
2. THAT this By-law come into effect as of its final passing thereof, and shall expire two (2) years from the date of passing.

By-law read and passed in Open Council this 3rd day of October, 2022.

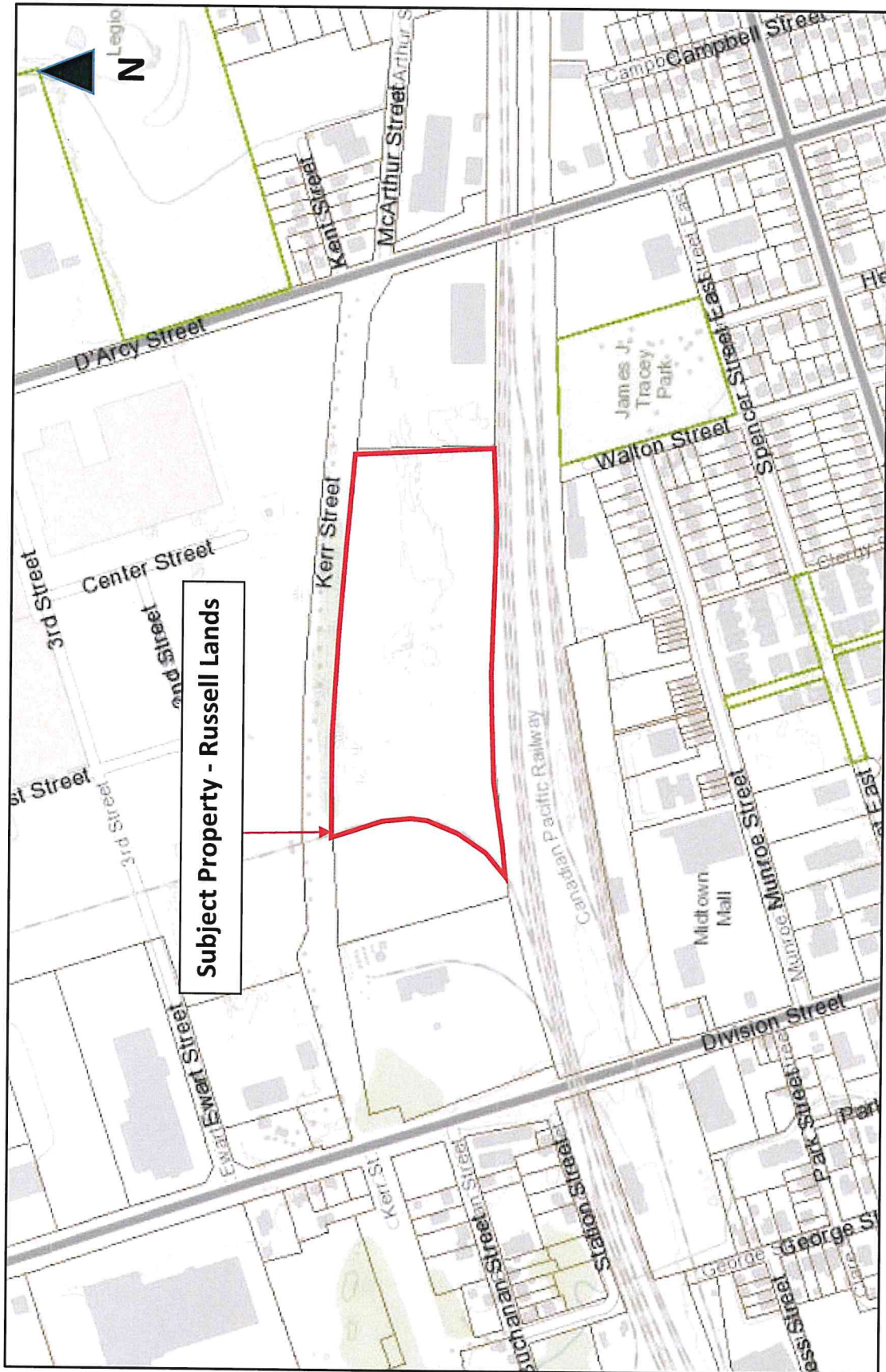


MAYOR

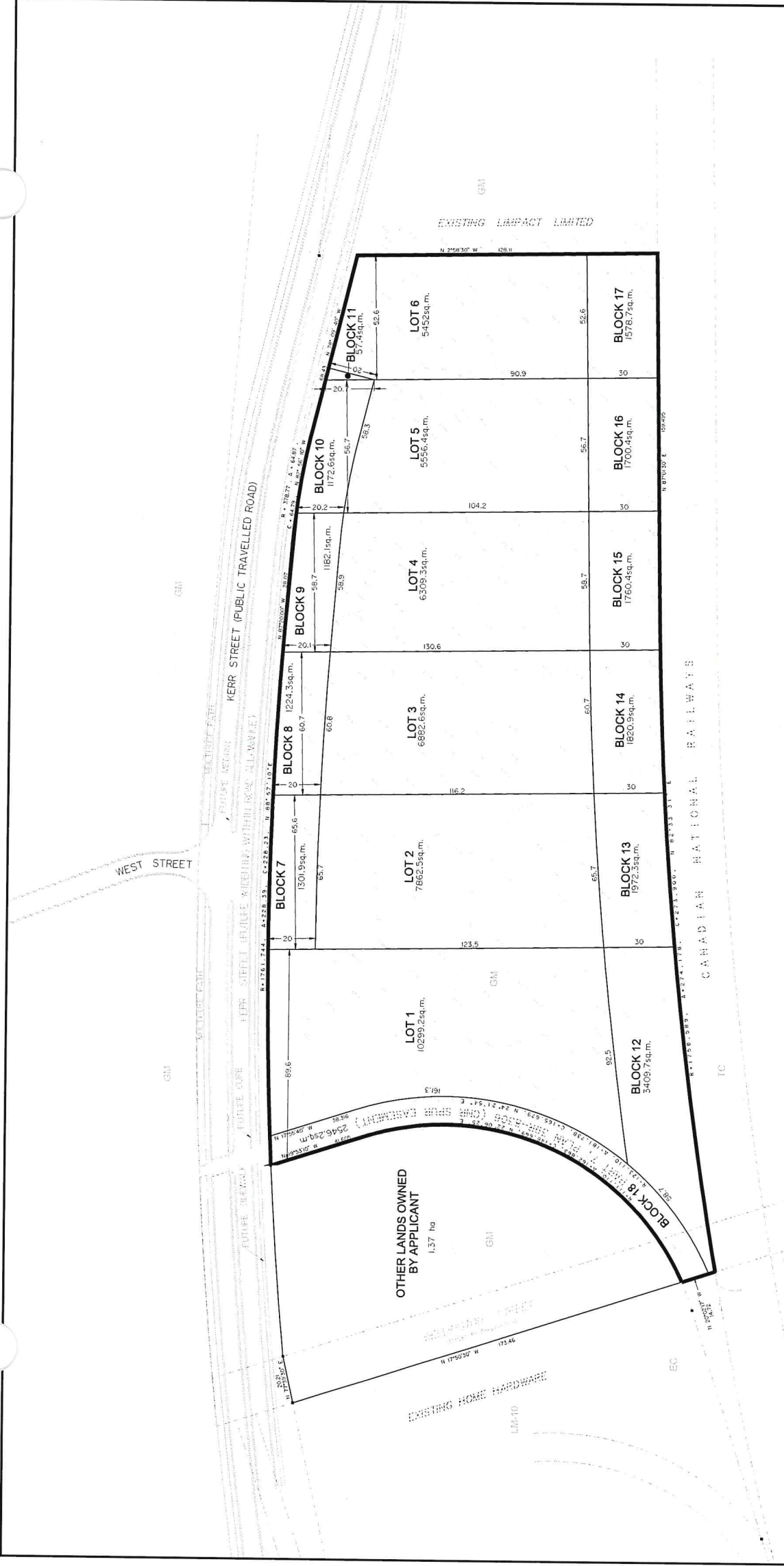


MUNICIPAL CLERK

CONTEXT MAP

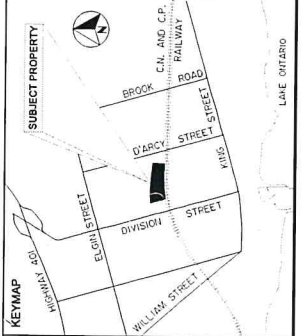


Subject Property - Russell Lands



DRAFT PLAN OF SUBDIVISION
 PART OF PARK LOT 11,
 PART OF WELLINGTON STREET (CLOSED)
 (FORMERLY PART OF LOT 16 CONGRESSION A, TOWNSHIP OF HAMILTON)
 CADDY PLAN
 (FORMERLY PART OF LOT 15, CONGRESSION A, TOWNSHIP OF HAMILTON)
 BEING PARTS 6, 7 & 8, PLAN 39R-8306, EXCEPT PART 1, PLAN 39R-13806
 TOWN OF COBOLJURG
 COUNTY OF NORTHUMBERLAND
 SCALE = 1:7500 METRIC

DATE: MARCH 16, 2021
 DRAWN BY: J. L. B. DATE: MARCH 16, 2021
 SCALE: 1:7500



LAND USE SCHEDULE

LAND USE	AREAS (m ²)	AREAS (sq. ft.)	UNITS
LOTS 1-6	45,542	492	6
BLOCKS 7-17	45,542	492	6
BLOCKS 2-17	12,342	134	4
BLOCK 18	2,545	27	1
TOTAL	62,071	665	17

ADDITIONAL INFORMATION REQUIRED UNDER SECTION 51(7) OF THE PLANNING ACT:

- SEE SURVEYORS CERTIFICATE;
- AS SHOWN ON DRAFT PLAN;
- SEE LAND USE SUMMARY;
- SEE DRAFT PLAN;
- AS SHOWN ON DRAFT PLAN;
- MUNICIPAL WATER AND SANITARY SEWER;
- SANDY SILT ON DRAFT PLAN;
- GARBAGE COLLECTION AND FIRE PROTECTION;
- AS SHOWN ON DRAFT PLAN.

METRIC NOTE:
 DISTANCES SHOWN ON THIS PLAN ARE IN METRES AND CAN BE CONVERTED TO FEET BY DIVIDING BY 0.3048.

TOPOGRAPHY NOTE:
 EXISTING SPOT ELEVATIONS PREPARED BY DGBR ENGINEERING LTD. CONTIGUOUS DRAIN AT INTERVALS OF 1.0m.

PLAN COPYRIGHT
 THIS DRAWING AND ALL RELATED DOCUMENTS ARE THE PROPERTY OF SYLVESTER & BROWN. REPRODUCTION IN WHOLE OR IN PART IS FORBIDDEN WITHOUT THE PRIOR WRITTEN CONSENT OF RFA PLANNING CONSULTANT INC. THESE DRAWINGS AND DOCUMENTS MAY NOT BE USED FOR ANY OTHER PROJECT WITHOUT THE WRITTEN CONSENT OF RFA PLANNING CONSULTANT INC.

SURVEYOR'S CERTIFICATE
 I CERTIFY THAT THE BOUNDARIES OF THE LAND TO BE SUBDIVIDED ARE CORRECTLY SHOWN.

MEHRILL D. AYLEAN
 ONTARIO LAND SURVEYOR

DATE: **March 16, 2021**

SYLVESTER & BROWN
 PLANNING CONSULTANT INC.
 10 TORONTO ROAD, SUITE 202, SCARBOROUGH, ONTARIO, CANADA M1H 3P5

RFA
 PLANNING CONSULTANT INC.
 371 SHEPPARD AVENUE EAST, SUITE 202, SCARBOROUGH, ONTARIO, CANADA M1S 1T2

408 No. 546 - CP